

**Facility Use, Adult Education, Emeth, Events, School, Sisterhood, Social Action, Worship, Youth Group, Hebcal Morgan Hill, Jan 2019 (Pacific Time - Los Angeles)**  
**Holidays in United States**

Sun	Mon	Tue	Wed	Thu	Fri	Sat
30	31	1	2	3	4	5
22nd of Tevet, 5779	23rd of Tevet, 5779 New Year's Eve 1pm - Mah Jongg - How to	24th of Tevet, 5779 New Year's Day 1pm - OFFICE CLOSED 4:30pm - Hebrew School @	25th of Tevet, 5779 1pm - OFFICE CLOSED	26th of Tevet, 5779	27th of Tevet, 5779 4:45pm - Candle lighting @ 6pm - No Service - Shabbat	28th of Tevet, 5779 Parashat Vaera 10am - Torah 'n T'filah
6	7	8	9	10	11	12
29th of Tevet, 5779	1st of Sh'vat, 5779 Rosh Chodesh Sh'vat 1pm - Mah Jongg - How to	2nd of Sh'vat, 5779 1pm - OFFICE OPEN 4:30pm - Hebrew School @ 7pm - Adult Ed Series	3rd of Sh'vat, 5779 1pm - OFFICE OPEN	4th of Sh'vat, 5779 7pm - Board Mtg @	5th of Sh'vat, 5779 4:30pm - Chai School 4:51pm - Candle lighting @ 6:30pm - Community 7:15pm - Short'n'Sweet	6th of Sh'vat, 5779 Parashat Bo
13	14	15	16	17	18	19
7th of Sh'vat, 5779 5pm - EDK Bowling Party	8th of Sh'vat, 5779 1pm - Mah Jongg - How to 6pm - Divas Who Dine @	9th of Sh'vat, 5779 10am - Adult Bat Mitzvah 1pm - OFFICE OPEN 4:30pm - Hebrew School @ 7pm - Tikkun Olam	10th of Sh'vat, 5779 1pm - OFFICE OPEN	11th of Sh'vat, 5779 4pm - Lord's Table @ Lord's	12th of Sh'vat, 5779 4:58pm - Candle lighting @ 7:15pm - Friday Night Live	13th of Sh'vat, 5779 Parashat Beshalach
20	21	22	23	24	25	26
14th of Sh'vat, 5779	15th of Sh'vat, 5779 Martin Luther King Jr. Day Tu BiShvat 1pm - Mah Jongg - How to 6pm - EDK to Interfaith 6pm - Interfaith MLK	16th of Sh'vat, 5779 1pm - OFFICE OPEN 4:30pm - Hebrew School @ 7pm - Adult Education	17th of Sh'vat, 5779 1pm - OFFICE OPEN	18th of Sh'vat, 5779	19th of Sh'vat, 5779 4:30pm - Chai School 5:06pm - Candle lighting @ 6:30pm - PotLuck Dinner @ 7:15pm - Short'n'Sweet	20th of Sh'vat, 5779 Parashat Yitro
27	28	29	30	31	1	2
21st of Sh'vat, 5779 3:30pm - EDK Feed the	22nd of Sh'vat, 5779 1pm - Mah Jongg - How to	23rd of Sh'vat, 5779 10am - Adult Bat Mitzvah 1pm - OFFICE OPEN 4:30pm - Hebrew School @	24th of Sh'vat, 5779 1pm - OFFICE OPEN	25th of Sh'vat, 5779	26th of Sh'vat, 5779 4:30pm - Chai School 5:14pm - Candle lighting @ 7:15pm - Friday Night Live	27th of Sh'vat, 5779 Parashat Mishpatim

**Facility Use, Adult Education, Emeth, Events, School, Sisterhood, Social Action, Worship, Youth Group, Hebcal Morgan Hill, Jan 2019 (Pacific Time - Los Angeles)**  
**Holidays in United States**

Sun	Mon	Tue	Wed	Thu	Fri	Sat
30	31	1	2	3	4	5
22nd of Tevet, 5779	23rd of Tevet, 5779 New Year's Eve 1pm - Mah Jongg - How to	24th of Tevet, 5779 New Year's Day 1pm - OFFICE CLOSED 4:30pm - Hebrew School @	25th of Tevet, 5779 1pm - OFFICE CLOSED	26th of Tevet, 5779	27th of Tevet, 5779 4:45pm - Candle lighting @ 6pm - No Service - Shabbat	28th of Tevet, 5779 Parashat Vaera 10am - Torah 'n T'filah
6	7	8	9	10	11	12
29th of Tevet, 5779	1st of Sh'vat, 5779 Rosh Chodesh Sh'vat 1pm - Mah Jongg - How to	2nd of Sh'vat, 5779 1pm - OFFICE OPEN 4:30pm - Hebrew School @ 7pm - Adult Ed Series	3rd of Sh'vat, 5779 1pm - OFFICE OPEN	4th of Sh'vat, 5779 7pm - Board Mtg @	5th of Sh'vat, 5779 4:30pm - Chai School 4:51pm - Candle lighting @ 6:30pm - Community 7:15pm - Short'n'Sweet	6th of Sh'vat, 5779 Parashat Bo
13	14	15	16	17	18	19
7th of Sh'vat, 5779 5pm - EDK Bowling Party	8th of Sh'vat, 5779 1pm - Mah Jongg - How to 6pm - Divas Who Dine @	9th of Sh'vat, 5779 10am - Adult Bat Mitzvah 1pm - OFFICE OPEN 4:30pm - Hebrew School @ 7pm - Tikkun Olam	10th of Sh'vat, 5779 1pm - OFFICE OPEN	11th of Sh'vat, 5779 4pm - Lord's Table @ Lord's	12th of Sh'vat, 5779 4:58pm - Candle lighting @ 7:15pm - Friday Night Live	13th of Sh'vat, 5779 Parashat Beshalach
20	21	22	23	24	25	26
14th of Sh'vat, 5779	15th of Sh'vat, 5779 Martin Luther King Jr. Day Tu BiShvat 1pm - Mah Jongg - How to 6pm - EDK to Interfaith 6pm - Interfaith MLK	16th of Sh'vat, 5779 1pm - OFFICE OPEN 4:30pm - Hebrew School @ 7pm - Adult Education	17th of Sh'vat, 5779 1pm - OFFICE OPEN	18th of Sh'vat, 5779	19th of Sh'vat, 5779 4:30pm - Chai School 5:06pm - Candle lighting @ 6:30pm - PotLuck Dinner @ 7:15pm - Short'n'Sweet	20th of Sh'vat, 5779 Parashat Yitro
27	28	29	30	31	1	2
21st of Sh'vat, 5779 3:30pm - EDK Feed the	22nd of Sh'vat, 5779 1pm - Mah Jongg - How to	23rd of Sh'vat, 5779 10am - Adult Bat Mitzvah 1pm - OFFICE OPEN 4:30pm - Hebrew School @	24th of Sh'vat, 5779 1pm - OFFICE OPEN	25th of Sh'vat, 5779	26th of Sh'vat, 5779 4:30pm - Chai School 5:14pm - Candle lighting @ 7:15pm - Friday Night Live	27th of Sh'vat, 5779 Parashat Mishpatim



## Shabbat Information for the Month of January 2019

<p><u>Shabbat Va'era</u> January 5      28 Tevet 5779 <b>Torah 'N T'filah 10:00 AM</b> <b>Lay Leader: Mel Weisblatt</b> <b>Cantorial Soloist: Mark Levy</b></p>	<p><u>Shabbat Beshalach</u> January 18    13 Shevat 5779 <b>Friday Night Live 7:15 PM</b> <b>Lay Leader: Arthur Reidel</b> <b>Cantorial Soloist: Elizabeth Baseman/Meghan Lee</b></p>
<p><u>Shabbat Bo</u> January 11    6 Shevat 5779 Community Dinner 6:30 PM <b>Short 'N Sweet 7:15 PM</b> <b>Lay-Leader: Hana Cidon</b> <b>Cantorial Soloist: Sharon Genkin</b></p>	<p><u>Shabbat Yitro</u> January 25    20 Shevat 5779 Potluck Dinner 6:30 PM <b>Short 'N Sweet 7:15 PM</b> <b>Lay-Leader: Hana Cidon</b> <b>Cantorial Soloist: Sharon Genkin</b></p>

<p><u>Shabbat Mishpatim</u> February 1    27 Shevat 5779 <b>Friday Night Live 7:15 PM</b> <b>Lay Leader: Michael Oshan</b> <b>Cantorial Soloist: Julie O'Neill</b></p>
----------------------------------------------------------------------------------------------------------------------------------------------------------------------------------------

### Descriptions of Emeth Services

All evening services begin at 7:15 PM. All morning services begin at 10:00 AM.

**\*Shabbat Morning Service/TNT Torah 'N T'filah:** This service includes reading the weekly Torah portion and a sermon or teaching from the Rabbi. It is a complete Shabbat service.

**\*Friday Night Live:** This Erev Shabbat (Friday evening) service highlights the music of Shabbat. It is a full Shabbat service (no Torah service) with a sermon or teaching from the Rabbi.

**\*Shabbat Short 'N Sweet:** An informal short Erev Shabbat (Friday evening) service. Learn the meaning of the prayers and discuss the Torah portion of the week. Rabbi led, this service is especially appropriate for children of all ages as well as adults. It is part of the Religious School curriculum. Prayers for healing and Mourners Kaddish are included. It is preceded by a community dinner with Shabbat rituals.

**\*Shabbat at Home:** On certain weekends during the year, Congregation Emeth does not have community Shabbat services. Resources are available from the Congregation to facilitate a meaningful Shabbat dinner and Torah discussion in your home.

**\*Sunset Shabbat:** During summer, we often have an informal service, either outdoors in our beautiful Sukkah/Patio area, or in-the-round in the back of the Sanctuary.

# January 2019 Children Education Programs

## HEBREW SCHOOL

January 8, 15, 22, 29

4:30 - 6:00 PM Classroom time

## CHAI SCHOOL

January 11, 25

4:30 - 6:30 PM Classroom time



---

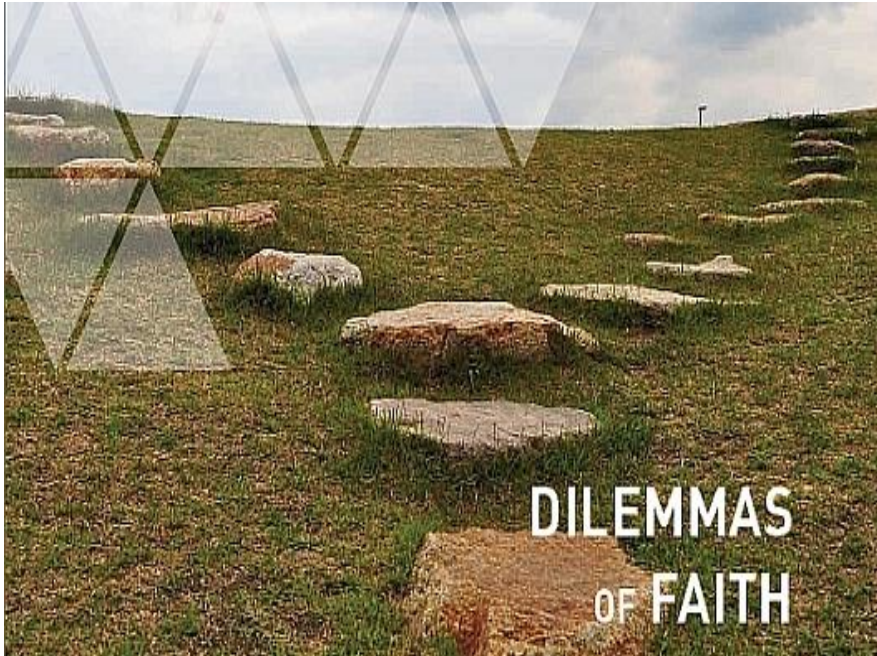
For education program information, please contact: [education@emeth.net](mailto:education@emeth.net)

# DILEMMAS OF FAITH THE PROPST-REIDEL MEMORIAL ADULT EDUCATION SERIES

NEXT CLASS January 8<sup>TH</sup>  
7:00 – 8:30 PM  
Drop-ins for one class welcome.  
RSVP to [adulted@emeth.net](mailto:adulted@emeth.net)



- **Fee:** No charge for members: \$20.00 for source materials
- Non-member: \$60.00 for 10 classes, Individual Class: \$10.00 plus \$20.00 for source materials



## Schedule and Themes

### Classes are held at Emeth

- Tuesday Evenings 7:00 8:30 PM

#### January 8 – 7-8:30 PM

Dilemma of God's Absence: Grappling with God's Departure from History

#### January 22 – 7-8:30 PM

Dilemma of Human Responsibility: What Does it Mean to Live a Life of Faith in an Age of Divine Hiddenness?

#### February 26 – 7-8:30 PM

Dilemma of Spiritual Role Models: A Biblical View of Redeeming Personalities

#### March – 5-8:30 PM

Dilemma of Faith and Politics: The Role of Ambivalence in Faith

#### March 19 – 7-8:30 PM

Dilemma of Practice: What is the Faith Experience

#### FINAL CLASS:

#### March 26 – 7-8:30 PM

Dilemma of Conviction: Do I Have to Believe in God to be a Good Jew?



**EDK GOES BOWLING**  
**SUNDAY, JANUARY 13<sup>TH</sup>**  
**5:00 – 6:30 PM**



**Daria Ogden will be the  
supervising adult.**

**More information will be emailed  
to EDK Students!!!**

**[edk@emeth.net](mailto:edk@emeth.net)**



**Come  
and join  
us for a  
fun  
evening**

**MONDAY,  
JANUARY 14  
DIVAS WHO  
DINE**

**At  
Betto's  
Bistro**

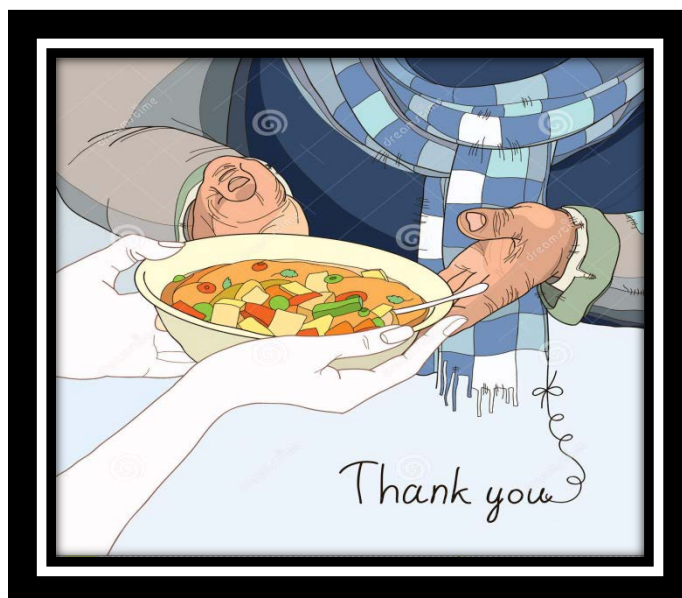
**17385 Monterey  
Morgan Hill CA 95037**

**EVITE WILL BE SENT 1<sup>ST</sup>  
PART OF JANUARY**

**SISTERHOOD@EMETH.NET**



Congregation Emeth is committed to helping feed the needy  
on the third Thursday of each month from 4:00 – 7:00 PM



**Lord's Table**  
St. Mary Catholic Parish  
11 First Street, Gilroy



**Our Next Date: January 17Th**

Children accompanied by parents are welcome!

For more information, contact Sandra Jackson at [sosialaction@emeth.net](mailto:sosialaction@emeth.net)



# **Interfaith Event Honoring Martin Luther King January 21st 7:00PM**

**MARTIN LUTHER KING JR. DAY  
"GROWING THE BELOVED COMMUNITY"**

**St Mary's Church Gilroy  
Corner of Monterey Street and First Street**

**Bringing our Interfaith Community together to remind us of Dr. King's message and to celebrate our common hopes for communities who care for one another...starting within our own local communities.**



**Photo credits: Rick Coencas**



**Interfaith Thanksgiving Service**



# EDK FEEDING THE HOMELESS

**WHEN: SUNDAY, JANUARY 27<sup>TH</sup> 3:00 PM**

**ST. JOSEPH'S LORDS TABLE**

**EDK will be feeding the less fortunate.**

**We need a parent to supervise this activity.**

Please Contact: Daria Ogden at [edk@emeth.net](mailto:edk@emeth.net)



**BEGINNING  
FEBRUARY 2019**

**LEARN HOW TO  
PLAY MAH JONG**



Beginning  
February  
every Monday  
from

**10:30AM**

We will teach  
you how to  
play

**Mah Jong**

More details  
will follow but  
Mark your  
calendar!

Cost \$50.00/  
per person

17835 Monterey Street  
Morgan Hill, CA 95037

408 778 8200



Please join us for the next

**“Great Reads  
with a  
Jewish Theme”**

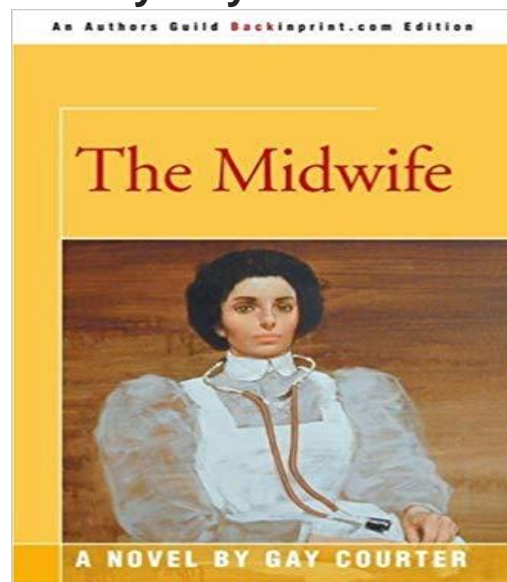
**Thursday, February 21<sup>st</sup>**

**7:00 PM**

**Facilitator: Nancy Fishman**

---

**MIDWIFE  
by Gay Courtier**



---

Hannah Blau, the midwife, fought savage religious prejudice to gain medical training in Moscow's legendary Imperial College. She fought her own doubts and fears as she plunged into a forbidden love affair and an even more hazard-filled marriage. She fought the awesome odds facing a Jewish immigrant and the bitter hostility of male doctors in turn-of-the-century New York. She fought for her burning dreams and desires. She fought and she won.

This magnificent novel follows the courageous and passionate Hannah Blau from the corridors of the Imperial Palace to the Lower East Side and finally to New York's Fifth Avenue mansions - recreating a whole new world of striving, of love, of lust, of life, death and birth.







## **Israel Tour and Women of the Wall 30<sup>th</sup> Anniversary Celebration MARCH 4 – 13, 2019**

\$2850 Double Occupancy  
\$695 additional for Single Room

Join us for 10 beautiful thought provoking and heart expanding days in Israel! Visit Tel Aviv, Jaffa, Haifa, Safed, Jerusalem, Masada and the Dead Sea, including Elijah's Cave, ancient ruins, synagogues, arts galleries, Yad Vashem Holocaust Memorial Museum and Children's Museum, open air markets and the Western Wall.

Our tour is led by Rabbi Pam Frydman of Congregation B'nai Emunah, Rabbi Paula Marcus of Temple Beth El and an Israeli tour guide. Our Israeli tour guide will also be joined by a Palestinian tour guide for a one-day dual narrative tour in the Jordan Valley and Jerusalem.

Our tour also includes joining Women of the Wall for their 30th anniversary Rosh Hodesh service at the Western Wall, a half day Women of the Wall educational forum and opening and closing receptions.

Join us! Our tour is open to men and women including  
Jewish and interfaith couples and individuals

### **Tour details and registration:**

<https://www.mejditours.com/open-tour/wow2019/>



## THANK YOU TO OUR DONORS November 2018

Donations to Congregation Emeth are gratefully accepted. Our membership contributions cover only the minimum annual expenses, not the full costs of running a synagogue.

Additional gifts are always needed to help keep our activities going.

Donations of money can be by either check or credit card. Donations can also be made in other forms such as property or securities (like appreciated stocks). All are of course tax deductible. Donation information and a form can be found on our website:

[http://www.emeth.net/images/PDFs/forms/donation\\_form.pdf](http://www.emeth.net/images/PDFs/forms/donation_form.pdf)

### ALLEN WISOTSKY EDUCATION FUND

*The Scholarship Fund assists the children in our Beit Sefer (religious schools) with need- based tuition scholarships.*

- MariaElena and Aaron Jarson, in memory of Minnabel Hirschman
- MariaElena and Aaron Jarson, honor of Jacob Ogden's Bar Mitzvah
- Leah-Robinson-Tejano and Edgar Tejano, School Scholarship Donation

### BETTY MEYER CAMPERSHIP FUND

*Reform Jewish summer camps and trips to Israel are valuable means for children to reinforce their Jewish identity. Your contribution will help a student attend who might not otherwise have this opportunity.*

- Marilyn and Barry Freund, in memory of Merion Freund and Rose Freund
- Marilyn and Barry Freund, in honor of the marriage of Michelle Rabin and Larry Holz

### BUILDING FUND

*We have owned our own building since 2008. Your contribution will support physical improvements to the building and/or will help us pay down our mortgage. We also issue bonds to members and friends of Emeth. For more information about our Emeth bonds, please contact our president*

[president@emeth.net](mailto:president@emeth.net)

- Robert Hamburger, in honor of the good work Bette Gardner and Michael Heil do for Congregation Emeth
- Cathy and Pi Silberstein, donation for the new shed.

### GENERAL FUND

*Contributions to this fund offset everyday operating expenses for religious school, adult education, youth activity, ritual, programming, etc. thus keeping dues and tuition lower*

- Joe and Denise Abmont, in memory of Rose Shapiro
- Linda Riesenbergl, in memory of Paul Herrera

### HIGH HOLIDAY

- Bernice Alaniz, High Holiday Donation.

### RABBI'S DISCRETIONARY FUND

*This fund enables our Rabbi to make donations to people in need, arrange for programs that she deems worthy, and contribute to other charitable causes she wishes to support. The fund is never used for the Rabbi's personal benefit.*

- Daria and Michael Ogden, Rabbi's Discretionary Donation

### TIKKUM OLAM

#### YOUTH ACTIVITIES

- Becky and Andre Neto, in honor of Rick Coencas' 60<sup>th</sup> Birthday

## **ADDITIONAL DONATION OPPORTUNITIES**

**ADULT EDUCATION COMMITTEE** - *Donations to Adult Education support the creation of programs and courses of studies geared for adults. Annual mainstays for this program include adult Hebrew classes, Shabbat in the Redwoods Scholar in Resident, the Adult B'nai Mitzvah program, lectures and films.*

### **AUTOMOBILE DONATION**

**BEIT SEIFER SCHOLARSHIP FUND** - *The Scholarship Fund assists the children in our Beit Sefer, religious schools, with need-based tuition scholarships.*

### **B'NAI MITZVAH KIDDUSH FUND**

### **CAPITAL CAMPAIGN**

#### **CEMETERY FUND**

*We maintain a Jewish section of a local cemetery. Your donation will go toward upkeep of the cemetery.*

#### **CHAI SCHOOL**

*Funds programs and equipment for the Religious School, helping to offset expenses not covered by school tuition.*

#### **COMMUNITY DINNER DONATIONS**

*Part of Emeth's culture is coming together for a Shabbat potluck or community dinner twice a month, prior to Shabbat Short 'N Sweet services. Your contribution enables us to continue this community building.*

#### **GARLIC FESTIVAL**

#### **MACHZOR LIBRARY FUND**

*This fund helps maintain our library and enables us to purchase new books for children and adults.*

#### **HIGH HOLIDAY DONATION**

*Our High Holiday liturgy reminds us that we have the power and obligation to make a positive different in the world by performing acts of tzedakah, righteousness. Your contribution to High Holiday donations will help enhance our vibrant congregation in the ongoing work of our Rabbi, our educational programs, and maintenance of our sanctuary.*

#### **KARI MUNOWITCH MEMORIAL**

#### **LORD'S TABLE**

#### **OUTREACH**

#### **PRAYER BOOK**

*This fund purchases new worship materials, including our Shabbat prayerbook, Mishkan T'fila and the new Reform High Holiday Machzor.*

#### **RACHAMIM FUND**

*Funds and defrays costs for our loving support of members by providing meals and other services for families in need, including new parents, members who are ill, and members who have sustained a loss of a loved one*

**RITUAL FUND** - *Provides funding for cantorial soloists, purchasing supplies to build our Sukkah, and offering special holiday programs, such as our Purim carnival and Chanukah community celebration.*

#### **SISTERHOOD**

*Sisterhood assists with special holiday receptions, develops a booklet to assist families with upcoming bar/bat mitzvah celebrations, offers programs to the women of Congregation Emeth, and provides philanthropic support to a variety of causes. Donations help fund each year's program*

#### **SOCIAL ACTION**

*This committee supports a broad range of activities to help enable congregants to repair the world including serving a monthly meal at the Lord's Table for the homeless.*

#### **SPECIAL EVENTS**