

5779
2018

November

cheshvan
kislev

KAR-BEN
PUBLISHING
www.karben.com

SUNDAY	MONDAY	TUESDAY	WEDNESDAY	THURSDAY	FRIDAY	SATURDAY
<p>OCTOBER</p> <p>S M T W T F S</p> <p>1 2 3 4 5 6</p> <p>7 8 9 10 11 12 13</p> <p>14 15 16 17 18 19 20</p> <p>21 22 23 24 25 26 27</p> <p>28 29 30 31</p>				1 23 cheshvan	2 24 cheshvan 	3 25 cheshvan 
4 26 cheshvan	5 27 cheshvan	6 28 cheshvan	7 29 cheshvan	8 30 cheshvan	9 1 kislev 	10 2 kislev 
11 3 kislev	12 4 kislev	13 5 kislev	14 6 kislev	15 7 kislev	16 8 kislev 	17 9 kislev 
CANADIAN REMEMBERANCE DAY VETERANS DAY				ROSH CHODESH	ROSH CHODESH	Toldot
18 10 kislev	19 11 kislev	20 12 kislev	21 13 kislev	22 14 kislev	23 15 kislev 	24 16 kislev 
				THANKSGIVING		Vayishlach
25 17 kislev	26 18 kislev	27 19 kislev	28 20 kislev	29 21 kislev	30 22 kislev 	<p>DECEMBER</p> <p>S M T W T F S</p> <p>1</p> <p>2 3 4 5 6 7 8</p> <p>9 10 11 12 13 14 15</p> <p>16 17 18 19 20 21 22</p> <p>23 24 25 26 27 28 29</p> <p>30 31</p>

5779
2018

December

kislev
tevet

KAR-BEN
PUBLISHING
www.karben.com

SUNDAY	MONDAY	TUESDAY	WEDNESDAY	THURSDAY	FRIDAY	SATURDAY
<p>NOVEMBER</p> <p>S M T W T F S</p> <p>1 2 3</p> <p>4 5 6 7 8 9 10</p> <p>11 12 13 14 15 16 17</p> <p>18 19 20 21 22 23 24</p> <p>25 26 27 28 29 30</p>	<p>JANUARY</p> <p>S M T W T F S</p> <p>1 2 3 4 5</p> <p>6 7 8 9 10 11 12</p> <p>13 14 15 16 17 18 19</p> <p>20 21 22 23 24 25 26</p> <p>27 28 29 30 31</p>					<p>1 23 kislev </p> <p><i>Vayeshev</i></p>
<p>2 24 kislev</p> <p> EREV HANUKKAH</p>	<p>3 25 kislev</p> <p> HANUKKAH</p>	<p>4 26 kislev</p> <p> HANUKKAH</p>	<p>5 27 kislev</p> <p> HANUKKAH</p>	<p>6 28 kislev</p> <p> HANUKKAH</p>	<p>7 29 kislev </p> <p> HANUKKAH</p>	<p>8 30 kislev </p> <p><i>Miketz</i> ROSH CHODESH HANUKKAH</p>
<p>9 1 tevet</p> <p> ROSH CHODESH HANUKKAH</p>	<p>10 2 tevet</p> <p>HANUKKAH</p>	<p>11 3 tevet</p>	<p>12 4 tevet</p>	<p>13 5 tevet</p>	<p>14 6 tevet </p>	<p>15 7 tevet </p> <p><i>Vayigash</i></p>
<p>16 8 tevet</p>	<p>17 9 tevet</p>	<p>18 10 tevet</p> <p>FAST OF 10TH OF TEVET</p>	<p>19 11 tevet</p>	<p>20 12 tevet</p>	<p>21 13 tevet </p>	<p>22 14 tevet </p> <p><i>Veyechi</i></p>
<p>23 15 tevet</p>	<p>24 16 tevet</p>	<p>25 17 tevet</p>	<p>26 18 tevet</p>	<p>27 19 tevet</p>	<p>28 20 tevet </p>	<p>29 21 tevet </p> <p><i>Shemot</i></p>
<p>30 22 tevet</p>	<p>31 23 tevet</p>	<p>CHRISTMAS DAY</p>				



Shabbat Information for the Month of November 2018

<u>Shabbat Chaye Sarah</u> November 3 25 Cheshvan 5779 Torah 'N T'filah Jacob Ogden Bar Mitzvah Cantorial Soloist: Liz Baseman	<u>Shabbat Vayetze</u> November 16 9 Kislev 5779 Friday Night Live 7:15 PM Lay Leader; Susan Meyers Cantorial Soloist: Julie O'Neill
<u>Shabbat Toldot</u> November 9 2 Kislev 5779 Shabbat at Home	<u>Shabbat Vayishlach</u> November 23 16 Kislev 5779 Shabbat at Home

Shabbat Vayeshev
November 30 23 Kislev 5779
Community Dinner 6:30 pm
Short 'N Sweet 7:15 PM

Descriptions of Emeth Services

All evening services begin at 7:15 PM. All morning services begin at 10:30 AM.

- *Shabbat Morning Service/TNT Torah 'N T'filah:** This service includes reading the weekly Torah portion and a sermon or teaching from the Rabbi. It is a complete Shabbat service.
- *Friday Night Live:** This Erev Shabbat (Friday evening) service highlights the music of Shabbat. It is a full Shabbat service (no Torah service) with a sermon or teaching from the Rabbi.
- *Shabbat Short 'N Sweet:** An informal short Erev Shabbat (Friday evening) service. Learn the meaning of the prayers and discuss the Torah portion of the week. Rabbi led, this service is especially appropriate for children of all ages as well as adults. It is part of the Religious School curriculum. Prayers for healing and Mourners Kaddish are included. It is preceded by a community dinner with Shabbat rituals.
- *Shabbat at Home:** On certain weekends during the year, Congregation Emeth does not have community Shabbat services. Resources are available from the Congregation to facilitate a meaningful Shabbat dinner and Torah discussion in your home.
- *Sunset Shabbat:** During summer, we often have an informal service, either outdoors in our beautiful Sukkah/Patio area, or in-the-round in the back of the Sanctuary.

NOVEMBER 2018

Children Education Programs

OPEN PARENT MEETING SUNDAY, NOV. 4TH 6:00 PM

HEBREW SCHOOL

November 6, 13, 27

4:30 -6:00 PM Classroom time

CHAI SCHOOL

November 2, 30

4:30-6:30 PM Classroom time



For education program information, please contact: education@emeth.net



Invites you to attend

Shabbat Morning Services

Saturday, November 3

Parshat Beha'alotecha

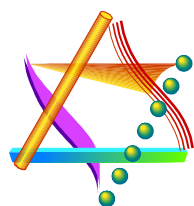
**The entire congregation
is invited as
Jacob Ogden
is called to the Torah as
Bar Mitzvah**



Services begin promptly at 10:00 AM

Followed by a Light Kiddush Lunch

RSVP for lunch to: dariaogden@yahoo.com



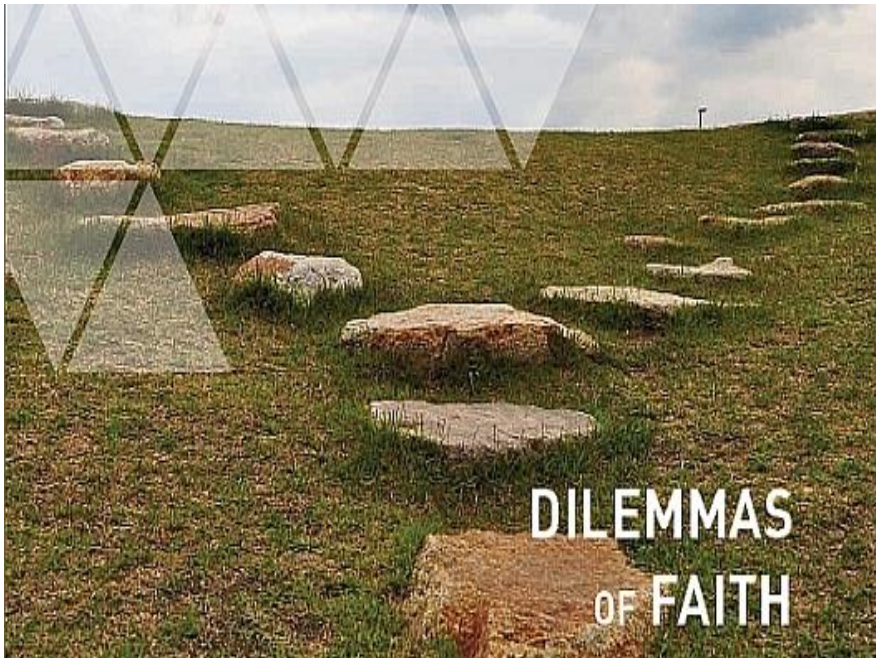
Services to be held at:

**Congregation Emeth
17835 Monterey Street
Morgan Hill**



DILEMMAS OF FAITH

THE PROPST-REIDEL MEMORIAL ADULT EDUCATION SERIES



NEXT CLASS NOVEMBER 6TH
7:00 – 8:30 PM
Drop-ins for one class welcome.
RSVP to adulted@emeth.net



- **Fee:** No charge for members: \$20.00 for source materials
- Non-member: \$60.00 for 10 classes, Individual Class: \$10.00 plus \$20.00 for source materials

January 22 – 7-8:30 PM

Dilemma of Human Responsibility: What Does it Mean to Live a Life of Faith in an Age of Divine Hiddenness?

February 26 – 7-8:30 PM

Dilemma of Spiritual Role Models: A Biblical View of Redeeming Personalities

March 5 – 7-8:30 PM

Dilemma of Faith and Politics: The Role of Ambivalence in Faith

March 19 – 7-8:30 PM

Dilemma of Practice: What is the Faith Experience

FINAL CLASS:

March 26 – 7-8:30 PM

Dilemma of Conviction: Do I Have to Believe in God to be a Good Jew?

Schedule and Themes

Classes are held at Emeth

- Tuesday Evenings 7:00 8:30 PM

November 6 – 7-8:30 PM

Dilemma of Biblical Theology: What is the Redeeming idea of Monotheism?

December 11 – 7-8:30 PM

Dilemma of Theodicy: Where is God in the Midst of Suffering?

December 18 – 7-8:30 PM

Dilemma of History: God, Evil and the Book of Job

January 8 – 7-8:30 PM

Dilemma of God's Absence: Grappling with God's Departure from History



EMET DOR KEF TEAM BUILDING AT CIRCLE UP RANCH

Sunday, November 11, 3:00-5:00 PM

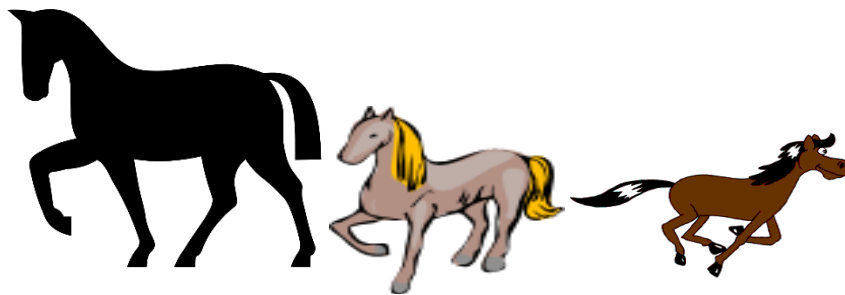
(Note new time!)

A special opportunity for group bonding at the Circle Up Ranch, led by Beth and Eric Killough

Wear appropriate clothing for being with horses and other animals on a ranch!

RSVP is a must by November 7th! Rena Dubin,

fam@furfamily.net; 831-420-1535



LOCATION WILL FOLLOW WITH MORE INFORMATION



NOVEMBER 12
DIVAS WHO
DINE

Noah's Bar & Bistro

**17500 Monterey
Street Morgan Hill,
CA 95037**

**Come
and join
us for a
fun
evening
at
Noahs
Bar and
Bistro**

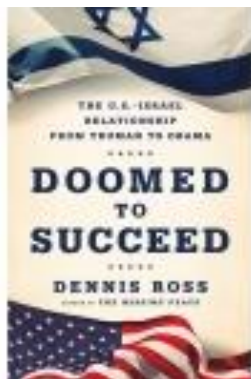
**EVITE WILL BE SENT 1ST
PART OF NOVEMBER**

SISTERHOOD@EMETH.NET

DOOMED TO SUCCEED: THE U.S.-ISRAEL RELATIONSHIP FROM TRUMAN TO OBAMA BY DENNIS ROSS
FACILITATOR: ELIZABETH MANDEL



Please join us for the next
*“Great Reads with a
Jewish Theme”*

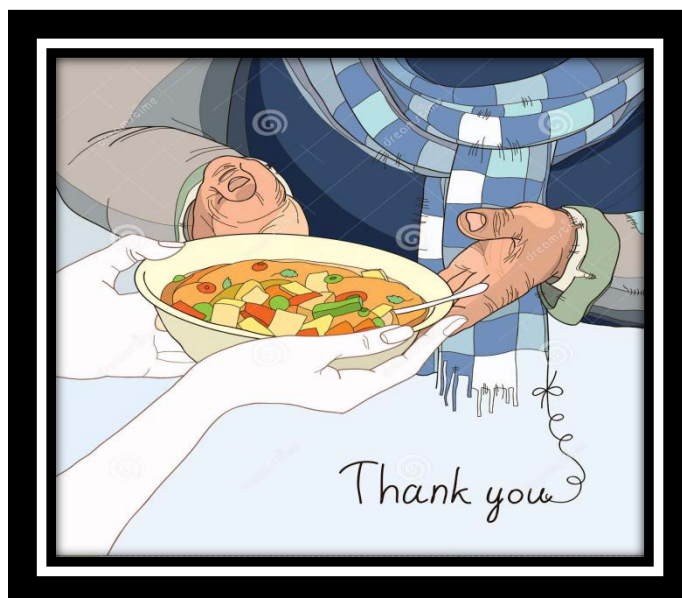


*Thursday,
November 15th
7:00 PM*

We will be discussing “Doomed to Succeed: The US – Israel Relationship From Truman to Obama” by Dennis Ross. Since this is a fairly lengthy book, we recommend that, if you are interested in the discussion, you start reading now. Or alternatively, since the book is structured chronologically, you can pick and read about particular time frames and/or US administrations that interest you. Questions? Contact Elizabeth Mandel (who will be moderating the discussion) at communication@emeth.net



Congregation Emeth is committed to helping feed the needy
on the third Thursday of each month from 4:00 – 7:00 PM



Lord's Table
St. Mary Catholic Parish
11 First Street, Gilroy



Our Next Date: NOVEMBER 15Th

Children accompanied by parents are welcome!

For more information, contact Sandra Jackson at sosialaction@emeth.net

SUNDAY, NOVEMBER 18TH

4:00 PM

ADVENT LUTHERAN CHURCH

16870 MURPHY AVE, MORGAN HILL, CA 95037

SCOUTS SHOULD WEAR UNIFORMS

**ALL SCOUTS WILL PARTICIPATE IN AN HONOR
GUARD AT THE BEGINNING OF SERVICE.**

**INTERFAITH COUNCIL OF SOUTH
COUNTY**



TIKKUN OLAM MEETING



ALL ARE WELCOME AND ENCOURAGE TO ATTEND

WHEN: NOVEMBER 20TH 7:00 PM

WHERE: EMETH LIBRARY

GUEST SPEAKER: JENNIFER PONCE
EMERGENCY SERVICE COORDINATOR FOR CITY OF
MORGAN HILL, CA

Please let me know if you plan to attend!

SUSAN MEYERS

R.S.V.P. TIKKUNOLAM@EMETH.NET

TOT SHABBAT



TOT SHABBAT FRIDAY, DECEMBER 7TH

ALL PRESCHOOLERS ARE WELCOME!

YOUNG CHILDREN AND GRANDCHILDREN

ARE WELCOME!

FUN Chanukah ACTIVITIES PROJECTS WITH

HOSTED BY: MARILYN FREUND AND LORI GOLDSMITH

CHANUKAH

Erev Chanukah, the first night of Chanukah, is
Sunday, December 2

The last candle lighting is Sunday, December 9.

The holiday officially ends Monday, December 10,
at sundown.

Saturday, December 1, Annual Holiday Parade.

The parade starts at 5:30 in downtown Morgan Hill on Monterey Road between 1st and 4th street on the northbound side. Immediately following the parade at the Morgan Hill Community and Cultural Center is the official tree lighting ceremony. Emeth's large Menorah will be lighted!

Friday, December 7, 6:30 PM, Congregation Emeth's annual Chanukah Dinner, Candle Lighting, and Shabbat/Chanukah Services.

Dinner begins after Chai School. Contribute to the potluck dinner, and don't forget to bring your favorite latkes! Bring a Chanukiah (Menorah) for your family to light and bring 8 candles (for the 7th night plus the shamash) candles

Sunday, December 9, 5:00-6:30 PM, Emet Dor Kef's annual Chanukah party. Daria Ogden and Rena Dubin are the supervising adults. Gift exchange is "white elephant", meaning regifting! If you don't want to regift, then don't spend more than \$10.00 on a non-gender specific gift. Gag gifts welcome and encouraged. Homecooked latke dinner will be served.

Monday, December 10, Sisterhood Chanukah

Party, 6:00 PM, at Congregation Emeth. No charge for Emeth Sisterhood members who have paid (or want to pay their \$36 dues that evening). Non-members are welcome for \$18. In addition, for all participants, we will be collecting \$17 as our annual fundraiser, benefitting our needy guests at the Lords Table on December 25. Checks should be made payable to Cathy Silverstein. Lastly we will have our annual Gift Swap for an item that is no more than \$18 in value and is wrapped. RSVP by **Saturday, December 1 - we must place our catering order.**

And though it's not Chanukah,
it's a holiday mitzvah:

Monday, December 25, Congregation Emeth
annual food service at Lord's Table



Jewish Family Services of Silicon Valley

Embrace-A-Family This Hanukkah

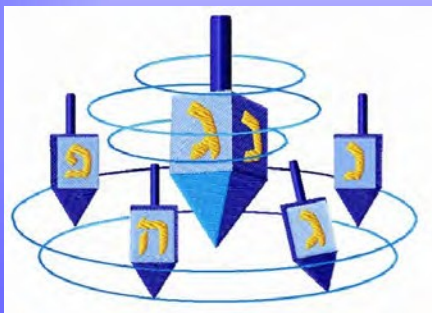
Here Is How It Works:

From November 14 to December 18
Pull a dreidel tag from any of our dreidel
boards, purchase the item and return the gift
and tag to Congregation Emeth

...And put a large smile on someone's face!

Thank you for your support.

Any questions? Contact Lori Cinnamon
At 408.357.7467



For online dreidels
check jfssv.org



Sisterhood Chanukah Party & Fundraiser

MONDAY, DECEMBER 10TH 6:00 PM

- 1.) A gift item (white elephant) worth no more than (\$18.00 value wrapped)
- 2.) Non-sisterhood guest fee \$18.00 for dinner
- 3.) Dues for sisterhood are \$36.00 and are able to be paid if you haven't done so! (No cost for dinner)
- 4.) Lord's Table Fundraiser for support for homeless people on December 25th donation - \$17.00 or donations of the following, small tents, socks, small containers of toiletries, large or extra large coats, gift cards from stores.
- 5.) Evite will be emailed in November

SISTERHOOD
CHANUKAH
PARTY AND
FUNDRAISER!

CONGREGATION
EMETH SOCIAL
HALL

ISRAELI DINNER
CATERED BY
CHEF MANNY

RSVP by:
December 1st

SISTERHOOD@EMETH.NET

OR

(408) 778 8200



St. Joseph's Family Center Helps the Homeless

St. Joseph's in Gilroy helps the homeless year around. They are looking for donations of small tents, socks, small containers of toiletries (hotel size), laundry pods, back packs, men's large or extra large coats, gently used coats in all sizes, and gift cards from stores.

This is an easy way for you to support St. Joseph's with a \$17 check made out to Cathy Silverstein by **December 10** and she will do the shopping. You will get a tax deduction letter for your support from St. Joseph's.

Send your check to Cathy Silverstein
c/o Congregation Emeth
17835 Monterey Street, Morgan Hill, CA 95037

The Lord's Table

Please join Congregation Emeth when we prepare and serve our annual holiday meal for needy families on Tuesday, December 25th at:

The Lord's Table

St. Mary's Catholic Church (on the corner of Monterey and 1st Street in Gilroy).

This enables the regular food preparation and serving staff to enjoy the day with their families.

The volunteer day starts at 9:00AM and ends around 2:00 PM and is broken into three overlapping shifts: Volunteers are encouraged to sign up for more than one shift or come early for the 2nd two shifts or to be able to stay late if there is work to be done. It is a special mitzvah to stay for cleanup. Specific assignments are made on the day of the event and efforts are made to assign people to a job they desire, but please be willing to help where needed.



Here is a description of each job:

Cooking and Setup:

Kitchen: prep potatoes and veggies for cooking, reheat turkeys, set up steam tables, cook stuffing, potatoes, veggies, and make gravy.

Gym: set up tables and chairs for dining, set up tables for clothes distribution and toys, wrap any remaining toys and organize toys for Santa. Sort clothes for distribution.

Serving: set up serving stations, organize desserts, cut pies, cakes if needed, organize drink station. Serve food to clients. Bus tables as needed. Staff clothing tables, Santa's helpers for toys.

Cleanup: wash dishes and prep (start as soon as possible). Break down tables and chairs and return to storage. Take down Christmas tree. Sweep. Clean kitchen. Put all Lord's Table supplies away. Store leftovers.

For questions, contact Curt at cpalm@curtpalm.com

please sign-up at <https://www.signupgenius.com/go/10c054aacab2eabfe3-lords1>

Please
also
consider
donating
any of the
following:

Toy Donation: New toys, age appropriate for babies -16 yrs old. Please drop off toys no later than December 15th, so that they are available to be wrapped by EDK teens at their Chanukah party on December 17. Drop-off in Classroom 2. Tag each gift with age and gender.

Winter Clothing/blanket drive: New or lightly used (and clean!) winter clothes and blankets. Jackets and socks are always appreciated items, too. Drop-off in donation bin in the synagogue's social hall.

Turkey Roasting: volunteers are needed to roast one or two turkeys at home, the day before Christmas. Frozen turkeys, donated by the roasters or provided by the Lords Table, will be delivered to the volunteers' homes a few days before Christmas Day. Cooked carved turkeys (and pan drippings if possible) need to be

delivered to the Lords Table by 10AM on the 25th. We will have 15 turkeys, so will need around 15 volunteers to roast turkeys, exact number depends on how many volunteers roast two turkeys.

Food Donations: (either delivered to Lord's Table Christmas morning or arrange with Curt Palm for drop off):

- 30 lb carrots
- 30 lb broccoli
- 40 lb potatoes
- Instant mashed potatoes (150 servings)
- Instant/ canned gravy (150 servings)
- Cranberry sauce
- Dinner rolls
- Juice boxes, 40-80 (2 cases from Costco etc)
- Fruit for fruit salad (melons, etc)





Israel Tour and Women of the Wall 30th Anniversary Celebration MARCH 4 – 13, 2019

\$2850 Double Occupancy
\$695 additional for Single Room

Join us for 10 beautiful thought provoking and heart expanding days in Israel! Visit Tel Aviv, Jaffa, Haifa, Safed, Jerusalem, Masada and the Dead Sea, including Elijah's Cave, ancient ruins, synagogues, arts galleries, Yad Vashem Holocaust Memorial Museum and Children's Museum, open air markets and the Western Wall.

Our tour is led by Rabbi Pam Frydman of Congregation B'nai Emunah, Rabbi Paula Marcus of Temple Beth El and an Israeli tour guide. Our Israeli tour guide will also be joined by a Palestinian tour guide for a one-day dual narrative tour in the Jordan Valley and Jerusalem.

Our tour also includes joining Women of the Wall for their 30th anniversary Rosh Hodesh service at the Western Wall, a half day Women of the Wall educational forum and opening and closing receptions.

Join us! Our tour is open to men and women including
Jewish and interfaith couples and individuals

Tour details and registration:

<https://www.mejditours.com/open-tour/wow2019/>

THANK YOU TO OUR DONORS September 2018

Donations to Congregation Emeth are gratefully accepted. Our membership contributions cover only the minimum annual expenses, not the full costs of running a synagogue.

Additional gifts are always needed to help keep our activities going.

Donations of money can be by either check or credit card. Donations can also be made in other forms such as property or securities (like appreciated stocks). All are of course tax deductible. Donation information and a form can be found on our website:

http://www.emeth.net/images/PDFs/forms/donation_form.pdf

ALLEN WISOTSKY EDUCATION FUND

The Scholarship Fund assists the children in our Beit Sefer (religious schools) with need- based tuition scholarships.

- *Mona and Fred Oken, in memory of Irene Rubin*
- *Nancy and David Bischoff, in memory of Barbara Yazman*
- *Lindy Wisotsky, in memory of Allen Wisotsky and his family, Sam Wisotsky, Ann Wisotsky, Irene Rubin, Betty Bloom and Marcia Reid*
- *Susan Toth and Family, in memory of Barbara Yazman*

BETTY MEYER CAMPERSHIP FUND

Reform Jewish summer camps and trips to Israel are valuable means for children to reinforce their Jewish identity. Your contribution will help a student attend who might not otherwise have this opportunity.

- *Becky and Andre Neto, in memory of Barbara Yazman*
- *Brigit and Perry Strongin, in memory of Barbara Yazman*
- *Patty and Jim Baggese, in memory of Ron Erickson*
- *Patty and Jim Baggese in memory of Betty Meyer and Arthur Meyer and Beth Baggese*
- *Paul, Eric and Andrew Compton, in memory of Barbara Yazman*
- *Paul Crompton, in memory of William Crompton, Joan Crompton Woodruff, Robert Crompton, Richard "Mike" Crompton and Mary Crompton*

CEMETERY FUND

We maintain a Jewish section of a local cemetery. Your donation will go toward upkeep of the cemetery.

- *Marianne Snook, in memory of Paula Walter*

GENERAL FUND

Contributions to this fund offset everyday operating expenses for religious school, adult education, youth activity, ritual, programming, etc. thus keeping dues and tuition lower

- *Kathy and Rick Coencas, in memory of Charles and Dorothy Coencas*
- *Kathy and Rick Coencas in memory of Robert Hazelton*
- *Kathy and Rick Coencas in memory of Barbara Yazman*
- *Jackie Stevens, in memory of Barbara Yazman*
- *Catherine and Joel Levine, in memory of Sylvia Levine*
- *Patricia and Jeffrey Lindenberg, in memory of Barbara Yazman*

HIGH HOLIDAY

- *Linda and Andy Klein, High Holiday Donation*
- *Karen and Doug Perry, in memory of Sybil and Stanley Marble Stone*

MACHZOR LIBRARY FUND

This fund helps maintain our library and enables us to purchase new books for children and adults.

- *Barney and Sandra Clamage, Machzor donation*

RABBI'S DISCRETIONARY FUND

This fund enables our Rabbi to make donations to people in need, arrange for programs that she deems worthy, and contribute to other charitable causes she wishes to support. The fund is never used for the Rabbi's personal benefit.

- Susan Meyers and Michael Oshan, in honor of new grandchild baby blessing
- Bette Gardner and Michael Heil, in memory of Barbara Yazman
- Karen and Doug Perry

RACHAMIM FUND

Funds and defrays costs for our loving support of members by providing meals and other services for families in need, including new parents, members who are ill, and members who have sustained a loss of a loved one

- Marianne Snook, in memory of Barbara Yazman
- Pamela Yazman, in memory of Barbara Yazman

SISTERHOOD

Sisterhood assists with special holiday receptions, develops a booklet to assist families with upcoming bar/bat mitzvah celebrations, offers programs to the women of Congregation Emeth, and provides philanthropic support to a variety of causes. Donations help fund each year's program.

- Kamiar and Norma Farhadria, in memory of Barbara Yazman
- Carol Davis and Dieter Walsemann, in memory of Barbara Yazman
- Bruce Wong, in memory of Barbara Yazman

TIKKUM OLAM

- Marianne Snook, in memory of Hans Walter, Holocaust

ADDITIONAL DONATION OPPORTUNITIES

ADULT EDUCATION COMMITTEE - *Donations to Adult Education support the creation of programs and courses of studies geared for adults. Annual mainstays for this program include adult Hebrew classes, Shabbat in the Redwoods Scholar in Resident, the Adult B'nai Mitzvah program, lectures and films.*

AUTOMOBILE DONATION

BEIT SEIFER SCHOLARSHIP FUND - *The Scholarship Fund assists the children in our Beit Sefer, religious schools, with need-based tuition scholarships.*

B'NAI MITZVAH KIDDUSH FUND

BUILDING FUND

We have owned our own building since 2008. Your contribution will support physical improvements to the building and/or will help us pay down our mortgage. We also issue bonds to members and friends of Emeth. For more information about our Emeth bonds, please contact our president, president@emeth.net.

CAPITAL CAMPAIGN

CHAI SCHOOL

Funds programs and equipment for the Religious School, helping to offset expenses not covered by school tuition.

COMMUNITY DINNER DONATIONS

Part of Emeth's culture is coming together for a Shabbat potluck or community dinner twice a month, prior to Shabbat Short 'N Sweet services. Your contribution enables us to continue this community building.

GARLIC FESTIVAL

HIGH HOLIDAY DONATION

Our High Holiday liturgy reminds us that we have the power and obligation to make a positive difference in the world by performing acts of tzedakah, righteousness. Your contribution to High Holiday donations will help enhance our vibrant congregation in the ongoing work of our Rabbi, our educational programs, and maintenance of our sanctuary.

KARI MUNOWITCH MEMORIAL

**LORD'S TABLE
OUTREACH**

PRAYER BOOK

This fund purchases new worship materials, including our Shabbat prayerbook, Mishkan T'fila and the new Reform High Holiday Machzor.

RITUAL FUND - *Provides funding for cantorial soloists, purchasing supplies to build our Sukkah, and offering special holiday programs, such as our Purim carnival and Chanukah community celebration.*

SPECIAL EVENTS

SOCIAL ACTION

This committee supports a broad range of activities to help enable congregants to repair the world including serving a monthly meal at the Lord's Table for the homeless.

YOUTH ACTIVITIES