

Sun	Mon	Tue	Wed	Thu	Fri	Sat
27	28	29	30	31	1	2
5th of Elul, 5777 2pm - Wine Tasting	6th of Elul, 5777	7th of Elul, 5777	8th of Elul, 5777	9th of Elul, 5777	10th of Elul, 5777 7pm - Shabbat at 7:15pm - Candle	11th of Elul, 5777 Parashat Ki Teitzei
3	4	5	6	7	8	9
12th of Elul, 5777	13th of Elul, 5777 Labor Day	14th of Elul, 5777	15th of Elul, 5777	16th of Elul, 5777 7pm - Board Mtg @	17th of Elul, 5777 4:30pm - Chai 5:30pm - Tot 6:30pm - Communit 7:05pm - Candle 7:15pm - Short 'n	18th of Elul, 5777 Parashat Ki Tavo 5pm - Progressive
10	11	12	13	14	15	16
19th of Elul, 5777 2pm - High Holiday 4pm - EDK @	20th of Elul, 5777	21st of Elul, 5777 4:30pm - Hebrew	22nd of Elul, 5777	23rd of Elul, 5777 4pm - Lords Table @	24th of Elul, 5777 4:30pm - Chai 6:54pm - Candle 7:15pm - Friday	25th of Elul, 5777 Leil Selichot Parashat Nitzavim-
17	18	19	20	21	22	23
26th of Elul, 5777 10am - Emeth Apple	27th of Elul, 5777 4:30pm - HHD 6pm - Divas Who Dine	28th of Elul, 5777 11am - Oneg Table 4:30pm - Hebrew 7:30pm - Education	29th of Elul, 5777 Erev Rosh Hashana 6:47pm - Candle 7:30pm - Rosh	1st of Tishrei, 5778 Rosh Hashana 5778 9:30am - Rosh 7:53pm - Candle	2nd of Tishrei, 5778 Rosh Hashana II 6pm - Picnic and 6:44pm - Candle	3rd of Tishrei, 5778 Parashat Ha'Azinu Shabbat Shuva
24	25	26	27	28	29	30
4th of Tishrei, 5778	5th of Tishrei, 5778	6th of Tishrei, 5778 4:30pm - Hebrew 7:30pm - Education	7th of Tishrei, 5778	8th of Tishrei, 5778	9th of Tishrei, 5778 Erev Yom Kippur 6:33pm - Candle 7:30pm - Yom	10th of Tishrei, Yom Kippur 9:30am - Yom 3:30pm - Yom 4:30pm - Yizkor 5pm - Concluding 5:40pm - Sounding

Sun	Mon	Tue	Wed	Thu	Fri	Sat
1	2	3	4	5	6	7
11th of Tishrei, 2pm - Sukkot Set-up	12th of Tishrei,	13th of Tishrei, 4:30pm - Hebrew	14th of Tishrei, Erev Sukkot 6:26pm - Candle	15th of Tishrei, Sukkot I 12am - Office Closed 7:32pm - Candle	16th of Tishrei, Sukkot II 4:30pm - Chai 6:23pm - Candle 6:30pm - Emeth 7:15pm - Short 'n	17th of Tishrei, Sukkot III (CH''M)
8	9	10	11	12	13	14
18th of Tishrei, Sukkot IV (CH''M) 5pm - Pizza in the	19th of Tishrei, Columbus Day Sukkot V (CH''M)	20th of Tishrei, Sukkot VI (CH''M) 4:30pm - Hebrew	21st of Tishrei, 5778 Sukkot VII (Hoshana) 6:15pm - Candle	22nd of Tishrei, Shmini Atzeret 12:30am - Office 7:22pm - Candle	23rd of Tishrei, Simchat Torah 4:30pm - Chai 6:13pm - Candle 6:30pm - Emeth 7:15pm - Short 'n	24th of Tishrei, Parashat Bereshit
15	16	17	18	19	20	21
25th of Tishrei, 4pm - Faith of our	26th of Tishrei,	27th of Tishrei, 4:30pm - Hebrew	28th of Tishrei,	29th of Tishrei, 4pm - Lord's Table 7pm - Board Mtg @	30th of Tishrei, Rosh Chodesh 4:30pm - Chai 6:03pm - Candle 6:30pm - Pot Luck 7:15pm - Short 'n	1st of Cheshvan, Parashat Noach Rosh Chodesh 10am - Torah 'n
22	23	24	25	26	27	28
2nd of Cheshvan, 4:30pm - EDK @	3rd of Cheshvan,	4th of Cheshvan, 4:30pm - Hebrew 7:30pm - Ed Mtg @	5th of Cheshvan,	6th of Cheshvan,	7th of Cheshvan, Yom HaAliyah 4:30pm - Chai 5:55pm - Candle 7:15pm - Friday	8th of Cheshvan, Parashat Lech-Lecha
29	30	31	1	2	3	4
9th of Cheshvan, 10am - Board	10th of Cheshvan,	11th of Cheshvan, Halloween	12th of Cheshvan,	13th of Cheshvan, 7pm - Emeth Reads	14th of Cheshvan, 4:30pm - Chai 5:30pm - Tot 5:47pm - Candle 6:30pm - Emeth 7:15pm - Short 'n	15th of Cheshvan, Parashat Vayera 6:30pm - Paint Night



# Services Information for the Month of September 2017

## Shabbat Ki Tetze

September 1,2      11 Elul  
Shabbat at Home

## Shabbat Ki Tavo

September 8      18 Elul  
Short N' Sweet 7:15 PM  
Community Dinner, 6:30 - 7:15 PM

## Shabbat Nitzavim-Vayelech Selichot

September 15      25 Elul  
Friday Night Live 7:15  
Cantorial Soloist, Elizabeth Baseman  
Special Selichot Program with  
Beth and Eric Killough

## Shabbat Shuvah

September 22      3 Tishri  
Shabbat and Tashlick  
in the park, 6:00

## Rosh Hashana

September 20 - 22 - 1,2 Tishri  
September 20 - Evening Services  
September 21 - Morning Service

## Yom Kippur

September 29, 30      10 Tishri  
September 29 - Evening Service  
September 30 - All day services  
Cantorial Soloist, Jonathan Marx



## Descriptions of Emeth Services

All evening services begin at 7:15 pm. All morning services begin at 10:00 am.

**\*Shabbat Morning Service/TNT Torah 'N T'filah:** This service includes reading the weekly Torah portion and a sermon or teaching from the Rabbi. It is a complete Shabbat service.

**\*Friday Night Live:** This Erev Shabbat (Friday evening) service highlights the music of Shabbat. It is a full Shabbat service (no Torah service) with a sermon or teaching from the Rabbi.

**\*Shabbat Short 'N Sweet:** An informal short Erev Shabbat (Friday evening) service. Learn the meaning of the prayers and discuss the Torah portion of the week. Rabbi led, this service is especially appropriate for children of all ages as well as adults. It is part of the Religious School curriculum. Prayers for healing and Mourners Kaddish are included. It is preceded by a community dinner with Shabbat rituals.

**\*Shabbat at Home:** On certain weekends during the year, Congregation Emeth does not have community Shabbat services. Resources are available from the Congregation to facilitate a meaningful Shabbat dinner and Torah discussion in your home.



# September Children & Youth Education Programs

## Tuesday Programs

September 12, 19, 26

### Hebrew School

4:30 -6:00 PM Classroom time

## Friday Programs

September 8, 15,

### Chai School

4:30-6:30 PM Classroom time

## Teen Programs

September 10

### Emet Dor Kef (The Fun Generation)

For education program information, please contact  
Charlene Rose at [admin@emeth.net](mailto:admin@emeth.net) or (408) 778-8200





# Save the date

Friday, September 8th  
5:30 to 6:30 PM

*Congregation Emeth*  
*Tot Shabbat*

*Join us for Community Shabbat Dinner*  
*6:30 - 7:15 PM*

*Jewish High Holiday Theme*

*More information contact*  
*Marilyn Freund*

[membership@emeth.com](mailto:membership@emeth.com)





Congregation Emeth's Annual

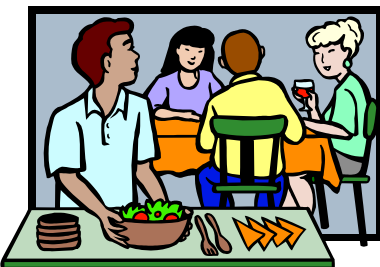
# Progressive Dinner

## Saturday, September 9

The evening will begin at the home of one of our member families and “progress” to other members’ homes where we will be enjoying different courses and culinary delights! Upon reserving your space, you will be assigned to one of the hosts and asked to contribute to that particular course.

If you are willing and able to host one of the courses at your home, please volunteer! You will be assigned a team of contributors to help, so no extra cooking is required!

**This is always a very popular adult-oriented event,  
and space is limited, so make your reservation today!  
(Adult members only)**



RSVP to [sisterhood@emeth.net](mailto:sisterhood@emeth.net)

- **September 18<sup>th</sup> - 4:30 PM**  
**Sisterhood Baskets for the Holidays**

# CLEAN UP DAY BEFORE THE HIGH HOLY DAYS

Sunday, September 10th  
2:00 PM

- General sprucing up before High Holy Days
- Painting ceiling in entry
- Clean up Room #1
- Clean up construction leftovers around portable
- Rerun wire for 3 security cameras
- Complete playground
- Hang sign on Handicap restroom
- Miscellaneous clean up~ no handyperson skills needed!

**WE NEED YOU!!!**



**WILL YOU HELP?**





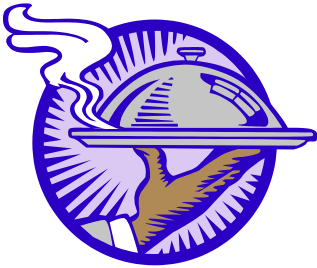
Congregation Emeth is committed to helping feed the needy  
on the third Thursday of each month

from 4:00-7:00 p.m.

Lord's Table

St. Mary Catholic Parish

11 First Street, Gilroy



Our next date is:

**September 14**

Children accompanied by parents are welcome!

For more information, contact Sandra Jackson

at [oursash@yahoo.com](mailto:oursash@yahoo.com)



**Come Home for the High Holy Days...  
Come Home to Congregation Emeth**



**Schedule of Services**

**Friday, September 15, 7:15 p.m.**

Shabbat Service with Selichot, the service of repentance.  
(See separate flyer)

**Wednesday, September 20 at 7:30 p.m.**

Erev Rosh Hashanah service  
Oneg (reception) hosted by Sisterhood

**Thursday, September 21 at 9:30 a.m.**

Rosh Hashanah service. Children's programs are available beginning at 10:00 a.m. for those who pre-register.

**Friday, September 22 at 6:00 p.m.**

Tashlich and Potluck Picnic Dinner at Anderson County Park  
(See separate flyer)

**Friday, September 29 at 7:30 p.m.**

Erev Yom Kippur service (Kol Nidre)

**Saturday, September 30 at 9:30 a.m.**

Yom Kippur service. Children's programs are available beginning at 10:00 a.m. for those who pre-register.

**3:30 p.m.** Study Session

**4:30 p.m.** Yizkor Memorial Service

**5:00 p.m.** Concluding (Mincha and Neilah) services

**After Neilah** Sounding of the Shofar & Light Break-the-Fast Potluck



## HIGH HOLIDAY DONATIONS

Throughout our High Holiday prayers, we repeat the importance of *t'fila* (prayer), *teshuvah* (repentance), and *zedakah* (charity, justice, righteousness). These three words capture the essence of the Holy Days.

Customarily, *zedakah* is given during the Holy Day season to the temple, as a remembrance of those who have died. Our tradition teaches that by giving of *zedakah* in their name, our loved ones live on through our deeds.

We encourage you to fulfill this mitzvah. Donations received by September 10 will be listed in the Rosh Hashanah *HaShavua* (program booklet). Donations received between September 11-20 will be listed in the Yom Kippur *HaShavua*. Donations received after September 20 will be listed in the November monthly donation flyer.

Send your gift of love to Congregation Emeth, 17835 Monterey St., Morgan Hill 95037 or [click here](#) to make your donation online through our website. Donations of \$10-\$18 per name are suggested however any amount is appreciated and fulfills the mitzvah.

Your Name(s) as you would like listed: \_\_\_\_\_

Donations in memory of:

---

---

---

---

---

---

---

---

"*Zedakah* and acts of kindness are the equivalent of all the mitzvot (commandments) of the Torah" – Jerusalem Talmud, Pe'ah 1:1.

# Food Drive

Emet Dor Kef (“The Fun Generation”)

is once again coordinating our annual  
High Holy Days food drive

Pick up an empty bag on Rosh Hashanah  
and bring it back filled on Yom Kippur!



**FEED THE  
HUNGRY**

---



17835 Monterey Street  
Morgan Hill, CA 95037  
408-778-8200  
www.emeth.net

## Children's High Holidays Program Registration

Congregation Emeth provides an educational and fun program for children, ages 4 - third grade. While there is no separate fee for this service for those who are preregistered, parents who do not pre-register their children will be billed \$18 per child. Avoid a registration fee by completing and returning this form by **August 31st.**

The program will start at 10:00 am on both Rosh Hashanah and Yom Kippur morning. The program will include stories, songs, crafts, and snacks (donations welcome—please check with our administrator if you plan to donate something: admin@emeth.net).

Please provide the information below for each child:

		Register Child	
Child's Name	Age	Rosh Hashanah	Yom Kippur

Parent's names (Who will be in the sanctuary?)

Rosh Hashanah: \_\_\_\_\_

Yom Kippur: \_\_\_\_\_

Any allergies to snack foods: \_\_\_\_\_

Additional information: **Please return this form by August 31, 2017**

Mail to: Children's HHD Program  
Congregation Emeth  
17835 Monterey St., Morgan Hill, CA 95037  
If you have questions, please call 408-778-8200  
or email admin@emeth.net

## **PAUSING AT THE THRESHOLD:**

### **Repentance, Reflection, and Spiritual Renewal**

#### ***Part I: Selichot Program***

***Friday, September 15, 7:15 PM***

#### ***Part II: YOM KIPPUR STUDY SESSION,***

***Saturday, September 30, 3:30-4:30 PM***

From the beginning of the Hebrew month of Elul (this year August 23) until the end of Yom Kippur (September 30) we are in a period of repentance, reflection, and spiritual renewal. This year, we will engage in a process of guided inner work to prepare and to experience the potential of real inner growth and relationship building. This is the core theme of the High Holiday season and these programs provide opportunities for genuine change. We will be led by Eric and Beth Killough. Rabbi Israel's D'verei Torah (sermons) will further develop these themes. Our spiritual work will be divided into two parts:

#### ***Friday, September 15, 7:15 PM – Erev Shabbat Services and Selichot – Turning On The Light***

During our abbreviated Erev Shabbat Service, we will have a Selichot Service (Service of Repentance), the traditional service to introduce the High Holy Day Season. Eric and Beth will introduce a process for discovering at least one area for each of us to begin the work of true *teshuva*, returning to our best selves and repenting for misdeeds. This program will be our wake up call, opening the path to self-discovery and awareness.

#### ***Saturday, September 30, 3:30-4:30 – Yom Kippur Study Session – Acceptance and Action***

During our annual Yom Kippur Study Session, we will confront what is holding us back from repentance and change. We will have opportunities to look to the possibilities of acceptance of ourselves and engage in actions that are within our control. Using personal stories, we will discover that genuine change is possible. It is not necessary to have attended the Selichot program to get value from this one.

***Throughout this period of spiritual work, Rabbi Israel is available to you for counseling and support.***

About Eric and Beth Killough: Eric and Beth Killough have been in partnership for 17 years. Their spiritual relationship has evolved as they have worked through childhood traumas and found recovery from addiction and alcoholism. They have committed to many years of personal development and professional training, and they utilize their own experiences of healing and hope to inspire and help others. Both writer and teachers, Beth and Eric live with their daughter, Emma, at Take a Chance Ranch in Morgan Hill. The ranch hosts leadership workshops for people to have unique and life-changing interactions with horses.





# EMETH APPLE PICKING & COMMUNITY PICNIC

September 17, 2017

**Gizdich Ranch**

55 Peckham Road

Watsonville, CA 95076

10 am - 12 pm

Pick your own apples for Rosh Hashanah!

Please join Congregation Emeth at Gizdich Ranch in Watsonville for our annual Rosh Hashanah apple picking and community picnic. Meet at the picnic area at 10 am and begin your holiday celebrations with friends, fun, and fresh fruit. Bring money for your apples and a picnic lunch. U-Pick apples may include Red Delicious, Golden Delicious, Newton Pippin, and/or Royal Gala. <http://gizdich-ranch.com/index.php>

# SHABBAT IN THE PARK

## Tashlich and Picnic Dinner

### Anderson County Park

### Live Oak Group Area

### September 22 ~ 6:00 PM

Gather together at 6:00 PM for Shabbat Rituals  
We'll provide the challah and grape juice  
Bring picnic dinner for your family – and a dessert to share  
After dinner, tashlich ritual led by Rabbi Israel

Begin the new year with a Shabbat picnic dinner  
under the trees beside the creek (dinner will be followed by *tashlich*).  
*Tashlich*, the symbolic casting away of sins, is a traditional part of the *teshuvah*, repentance, that  
Jewish people practice during the Days of Awe. Toss your "sins" (breadcrumbs) into Coyote Creek  
and watch them float away during this cleansing, contemplative ritual. (There are wonderful  
hiking trails; feel free to come early to enjoy the great outdoors!)



The picnic area by the creek is along Cochrane road, just beyond the Malaguerra/Cochrane intersection. The parking lot is visible from the road, and the picnic tables are just beyond the bathrooms, and visible from the parking lot.

If you get to the Anderson Dam entrance, you've gone too far.

For a map of the entire Anderson Park:  
<https://www.sccgov.org/sites/parks/parkfinder/Documents/Anderson-Broch-qxd> Anderson-Broch-qxd.pdf

Water shoes and a change of dry clothing are recommended for young children (or adults) who won't be able to resist the challenge of running water and damp rocks.

For further information, contact or Michael Oshan, Ritual Chair, [michaeloshan@sbcglobal.net](mailto:michaeloshan@sbcglobal.net) or any member of the Education Committee.



*Remember your loved one in perpetuity*  
**Dedicate a plaque on the  
 Congregation Emeth Memorial Board  
 on the wall of our sanctuary**



**The price of each plaque is \$360**

When inscribing a name you may either inscribe an English name, a Hebrew name or both. If you need help with the Hebrew spelling, please contact Rabbi Debbie Israel.

The inscription will also include both the Hebrew date of the Yahrzeit and the Gregorian date. The Rabbi can help with this as well.

**Each memorial plaque will be lit for the entire Hebrew month  
 in commemoration of the Yahrzeit.**

**Order Form - *Must be received by September 10 to be installed by Holy Days.***

**Please use one form for each memorial plaque**

Name of Deceased (English) \_\_\_\_\_

(Hebrew male) \_\_\_\_\_ Ben \_\_\_\_\_

(Hebrew female) \_\_\_\_\_ Bat \_\_\_\_\_

Date of Death (Gregorian) \_\_\_\_\_

(Hebrew) \_\_\_\_\_

Remembered by \_\_\_\_\_

**Please enclose a check for \$360 for each plaque ordered and send to:**

Congregation Emeth  
 Memorial Board  
 17835 Monterey Street  
 Morgan Hill, CA 95037

The background of the entire page is a light cream color, decorated with a pattern of colorful, stylized cutlery. The cutlery includes forks, knives, and spoons in shades of blue, green, yellow, and magenta. These items are scattered across the page, some overlapping each other, creating a festive and thematic border around the central text box.

## **Break the Fast Potluck**

**We welcome blintzes, kugels, salads, desserts,  
and more at the break-the-fast following the  
sounding of the shofar on September 30.**

**A list of suggested contributions is available at  
[http://www.signupgenius.com/go/20f0449a8a  
f28a02-break](http://www.signupgenius.com/go/20f0449a8af28a02-break). Please sign up there.**

**Questions? Please contact Marilyn at  
[membership@emeth.net](mailto:membership@emeth.net).**

**Food can be put in the refrigerator when you  
come to Kol Nidre, to the morning services, or  
to afternoon services.**

**We encourage you to celebrate with your  
congregation!**

# Ushers are needed!

## High Holiday Services

Please volunteer!

Contact:

Richard Pupko or [admin@emeth.net](mailto:admin@emeth.net)

and let me know which day(s) you will be available.

### **We need your help!**

Erev Rosh Hashanah

Rosh Hashanah morning

Kol Nidre

Yom Kippur



## THANK YOU TO OUR DONORS JULY 2017

Donations to Congregation Emeth are gratefully accepted. Our membership contributions cover only the minimum annual expenses, not the full costs of running a synagogue. Additional gifts are always needed to help keep our activities going.

Donations of money can be by either check or credit card. Donations can also be made in other forms such as property or securities (like appreciated stocks). All are of course tax deductible. Donation information and a form can be found on our website: [http://www.emeth.net/images/PDFs/forms/donation\\_form.pdf](http://www.emeth.net/images/PDFs/forms/donation_form.pdf)

### **ALLEN WISOTSKY EDUCATION FUND**

*The Scholarship Fund assists the children in our Beit Sefer (religious schools) with need- based tuition scholarships.*

- Lindy Wisotsky, in memory of Allen Wisotsky
- Marilyn and Barry Freund, in memory of Ruth Simon
- Marilyn and Barry Freund, to get well for Karen and Mike Wener

### **BETTY MEYER CAMPERSHIP FUND**

*Reform Jewish summer camps and trips to Israel are valuable means for children to reinforce their Jewish identity. Your contribution will help a student attend who might not otherwise have this opportunity.*

- Melanie Jordan, for making camp possible

### **CAPITAL CAMPAIGN**

- Kathy and Rick Coencas, Capital Campaign Donation

### **GENERAL FUND**

*Contributions to this fund offset everyday operating expenses for religious school, adult education, youth activity, ritual, programming, etc. thus keeping dues and tuition lower.*

- Aileen Teren-Foster and Dale Foster, for the Car Donation
- Becky and Andre Neto, In honor of Andre's promotion at work

### **RACHAMIM FUND**

*Funds and defrays costs for our loving support of members by providing meals and other services for families in need, including new parents, members who are ill, and members who have sustained a loss of a loved one.*

- Linda Riesenbergl, Rachamin Donation

## **ADDITIONAL DONATION OPPORTUNITIES**

**ADULT EDUCATION COMMITTEE** - *Donations to Adult Education support the creation of programs and courses of studies geared for adults. Annual mainstays for this program include adult Hebrew classes, Shabbat in the Redwoods Scholar in Resident, the Adult B'nai Mitzvah program, lectures and films.*

### **AUTOMOBILE DONATION**

**BEIT SEIFER SCHOLARSHIP FUND** - *The Scholarship Fund assists the children in our Beit Sefer, religious schools, with need-based tuition scholarships.*

### **BIMAH FUND**

### **B'NEI MITZVAH KIDDUSH FUND**

### **BUILDING FUND**

*We have owned our own building since 2008. Your contribution will support physical improvements to the building and/or will help us pay down our mortgage. We also issue bonds to members and friends of Emeth. For more information about our Emeth bonds, please contact our president, [president@emeth.net](mailto:president@emeth.net).*

### **CEMETERY FUND**

*We maintain a Jewish section of a local cemetery. Your donation will go toward upkeep of the cemetery.*

### **CHAI SCHOOL**

*Funds programs and equipment for the Religious School, helping to offset expenses not covered by school tuition.*

### **COMMUNITY DINNER DONATIONS**

*Part of Emeth's culture is coming together for a Shabbat potluck or community dinner twice a month, prior to Shabbat Short 'N Sweet services. Your contribution enables us to continue this community building.*

### **GARLIC FESTIVAL**

### **HIGH HOLIDAY DONATION**

*Our High Holiday liturgy reminds us that we have the power and obligation to make a positive difference in the world by performing acts of tzedakah, righteousness. Your contribution to High Holiday donations will help enhance our vibrant congregation in the ongoing work of our Rabbi, our educational programs, and maintenance of our sanctuary.*

### **HIGH HOLIDAY MACHZOR**

### **LIBRARY FUND**

*This fund helps maintain our library and enables us to purchase new books for children and adults.*

### **KARI MUNOWITCH MEMORIAL**

### **LORD'S TABLE**

### **RABBI'S DISCRETIONARY FUND**

*This fund enables our Rabbi to make donations to people in need, arrange for programs that she deems worthy, and contribute to other charitable causes she wishes to support. The fund is never used for the Rabbi's personal benefit.*

### **SISTERHOOD**

*Sisterhood assists with special holiday receptions, develops a booklet to assist families with upcoming bar/bat mitzvah celebrations, offers programs to the women of Congregation Emeth, and provides philanthropic support to a variety of causes. Donations help fund each year's program.*

**SOCIAL ACTION**

*This committee supports a broad range of activities to help enable congregants to repair the world including serving a monthly meal at the Lord's Table for the homeless.*

**OUTREACH****PRAYER BOOK**

*This fund purchases new worship materials, including our Shabbat prayerbook, Mishkan T'fila and the new Reform High Holiday Machzor.*

**RITUAL FUND** - *Provides funding for cantorial soloists, purchasing supplies to build our Sukkah, and offering special holiday programs, such as our Purim carnival and Chanukah community celebration.*

**SPECIAL EVENTS****YOUTH  
ACTIVITIES**

