

5776
2016

September

av
elul

KAR-BEN
PUBLISHING

SUNDAY	MONDAY	TUESDAY	WEDNESDAY	THURSDAY	FRIDAY	SATURDAY
				1 <small>28 av</small>	2 <small>29 av</small>  SHABBAT AT HOME	3 <small>30 av</small>  <i>Re'eh</i> ROSH CHODESH
4 <small>1 elul</small> ROSH CHODESH	5 <small>2 elul</small> LABOR DAY	6 <small>3 elul</small>	7 <small>4 elul</small>	8 <small>5 elul</small> BOARD MEETING 7-9 PM	9 <small>6 elul</small>  PROSPECTIVE MEMBER//NEW MEMBER SHABBAT 7:15-8:45 PM	10 <small>7 elul</small>  <i>Shoftim</i>
11 <small>8 elul</small> EDK WITH RABBI & RACHEL 3:30-5:30 PM	12 <small>9 elul</small>	13 <small>10 elul</small> HEBREW SCHOOL OPENING SESSION 4:30-6:00 PM	14 <small>11 elul</small>	15 <small>12 elul</small> LORDS TABLE 4:00-7:00 PM	16 <small>13 elul</small>  CHAI SCHOOL OPENING SESSION 4:30-6:30 PM COMMUNITY DINNER 6:30-7:15 PM SNS 7:15-8:00 PM	17 <small>14 elul</small>  SISTERHOOD PROGRESSIVE DINNER AND EDK BABYSITTERS 5:00-8:00 PM <i>Ki Tetze</i>
18 <small>15 elul</small> FAITH OF OUR NEIGHBORS - MORMON (LDS) 4:00-6:00 PM	19 <small>16 elul</small>	20 <small>17 elul</small> HEBREW SCHOOL 4:30-6:00 PM	21 <small>18 elul</small>	22 <small>19 elul</small> FALL BEGINS	23 <small>20 elul</small>  CHAI SCHOOL 4:30-6:30 POTLUCK DINNER 6:30 SNS SERVICES WITH SELICHOT (FORGIVENESS) 7:15-8:00 PM	24 <small>21 elul</small>  Taste of MH 9:00 AM-5:00 PM <i>Ki Tavo</i> SELICHOT
25 <small>22 elul</small> Taste of MH 9:00 AM-5:00 PM	26 <small>23 elul</small> SISTERHOOD HH BASKETS FOR HOMEBOUND	27 <small>24 elul</small> HEBREW SCHOOL 4:30-6:00 PM	28 <small>25 elul</small>	29 <small>26 elul</small>	30 <small>27 elul</small>  CHAI SCHOOL 4:30-6:30 PM SHABBAT AT HOME	

5776-5777
2016

October

elul
tishri

KAR-BEN
PUBLISHING

SUNDAY	MONDAY	TUESDAY	WEDNESDAY	THURSDAY	FRIDAY	SATURDAY
						1 ^{28 elul} 
2 ^{29 elul}  ROSH HASHANAH EVENING SERVICES & SISTERHOOD HOSTED ONEG 7:30-9:00 PM EREV ROSH HASHANAH	3 ^{1 tishri}  SERVICES 9:30 AM CHILDREN'S PROGRAMS 10:00 AM LUNCH PICNIC & TASHLICH 1:00-2:30 PM ROSH HASHANAH	4 ^{2 tishri} NO HEBREW SCHOOL ROSH HASHANAH	5 ^{3 tishri} FAST OF GEDALIAH	6 ^{4 tishri}	7 ^{5 tishri}  CHAI SCHOOL 4:30-6:30 PM COMMUNITY DINNER 6:30-7:15 PM SNS SERVICES 7:15-8:00 PM	8 ^{6 tishri}  Nitzavim Vayelech SHABBAT SHUVAH
9 ^{7 tishri} EDK AND RITUAL COMMITTEE PREPARE SUKKAH (RACHEL) 2:00-4:00 PM	10 ^{8 tishri} COLUMBUS DAY CANADIAN THANKSGIVING	11 ^{9 tishri} YOM KIPPUR EVENING SERVICES 7:30-9:00 PM (NO HEBREW SCHOOL) KOL NIDRE	12 ^{10 tishri} SERVICES 9:30 AM, CHILDREN'S PROGRAM; YIZKOR & AFTERNOON SERVICES, BREAK FAST YOM KIPPUR YIZKOR	13 ^{11 tishri} BOARD MEETING 7-9 PM	14 ^{12 tishri}  CHAI SCHOOL 4:30-6:30 SUKKAH DEDICATION POTLUCK - FNL 6:30-8:30 CELEBRATING RABBI ISRAEL'S 10TH!ANNIV	15 ^{13 tishri}  Ha'azinu
16 ^{14 tishri}  EDK PIZZA IN THE HUT RABBI AND RACHEL 5:00-6:30 PM (NOTE NEW TIME!)	17 ^{15 tishri}  SUKKOT	18 ^{16 tishri} HEBREW SCOOOL 4:30-6:00 PM SUKKOT	19 ^{17 tishri} INTERFAITH CLERGY MEETING IN SUKKAH 2:00-4:00 PM INTERMEDIATE DAY	20 ^{18 tishri} LORDS TABLE 4-7 PM INTERFAITH LAY GROUP (ICSC) POTLUCK IN SUKKAH 6:00-8:00 PM INTERMEDIATE DAY	21 ^{19 tishri}  CHAI SCHOOL 4:30-6:30 PM POTLUCK DINNER 6:30 SIMCHAT TORAH CELEBRATION 7:15-8:30 INTERMEDIATE DAY	22 ^{20 tishri}  CHOL HAMOED
23 ^{21 tishri}  HOSHANAH RABBAH	24 ^{22 tishri}  SHEMINI ATZERET YIZKOR	25 ^{23 tishri}  HEBREW SCHOOL 4:30-6:00 PM Vezot Habrachah SIMCHAT TORAH	26 ^{24 tishri} EDK POPCORN SALES BEGIN	27 ^{25 tishri} TEACHERS' MEETING 11:00-12:00	28 ^{26 tishri}  CHAI SCHOOL 4:30-6:30 PM FNL 7:15-8:45 PM	29 ^{27 tishri}  Bereshit
30 ^{28 tishri} EDK/RITUAL SUKKAH 2	31 ^{29 tishri}					



Shabbat Information for the Month of September 2016

Shabbat Re'eh - Rosh Chodesh

September 2 30 Av
Shabbat at Home

Shabbat Shoftim

September 9 7 Elul
Prospective & New Member Shabbat
7:15 PM
Angela Gold, Cantorial Soloist
Ice Cream Oneg (Reception)

Shabbat Ki Tetze

September 16 14 Elul
Community Dinner 6:30
Shabbat Short 'N Sweet 7:15

Shabbat Ki Tavo - Selichot

September 23 21 Elul
Shabbat Potluck Dinner 6:30
Shabbat Short 'N Sweet with Selichot
(Forgiveness) 7:15

Shabbat Nitzavim

September 30 28 Elul
Shabbat at Home



Descriptions of Emeth Services

All evening services begin at 7:15 pm. All morning services begin at 10:00 am.

***Shabbat Morning Service/TNT Torah 'N T'filah:** This service includes reading the weekly Torah portion and a sermon or teaching from the Rabbi. It is a complete Shabbat service.

***Friday Night Live:** This Erev Shabbat (Friday evening) service highlights the music of Shabbat. It is a full Shabbat service (no Torah service) with a sermon or teaching from the Rabbi.

***Shabbat Short 'N Sweet:** An informal short Erev Shabbat (Friday evening) service. Learn the meaning of the prayers and discuss the Torah portion of the week. Rabbi led, this service is especially appropriate for children of all ages as well as adults. It is part of the Religious School curriculum. Prayers for healing and Mourners Kaddish are included. It is preceded by a community dinner with Shabbat rituals.

***Shabbat at Home:** On certain weekends during the year, Congregation Emeth does not have community Shabbat services. Resources are available from the Congregation to facilitate a meaningful Shabbat dinner and Torah discussion in your home.



September Children & Youth Education Programs

Tuesday Programs

September 13, 20, 27

Hebrew School

4:30 -6:00 PM Classroom time

Friday Programs

September 16, 23, 30

Chai School

4:30-6:30 PM Classroom time

Teen Programs

September 11

Emet Dor Kef (The Fun Generation)

3:30-5:30 PM EDK with Rabbi and Rachel

For education program information, please contact
Debbie Zajac at admin@emeth.net or (408) 778-8200



EMET DOR KEF

(EDK, EMETH'S FUN GENERATION)

COMING UP FOR EDK!

SEPTEMBER 11, 2016, SUNDAY, 3:30-5:30 PM – Our first EDK of this school year! NOTE THE EARLIER TIME BECAUSE: We have so much to do, so little time!

We will start with our famous EDK make your sundae – be on time – to welcome everyone especially our new EDK'ers (we have 5! Figure it out.)!

Then we'll do a little business, including creating a wall mural for our new sukkah! We are so proud of the mural created by EDK in 2009, upstairs in our art room. We are going to create another one to be one of the walls in our sukkah! We know we have lots of artists in our group, and lots more who can color in the lines, so Rachel will help us create a lasting wall, to be used year after year!

UPCOMING EVENTS:

Saturday night, September 17: EDK babysitting for temple's progressive dinner! Thank you Quinn, Jason, and Kelsey for volunteering! If your school gives service points for temple activities, Rabbi will sign your forms for this mitzvah!

September 24-25 – Taste of Morgan Hill. Temple needs volunteers in our booth! Again, if your school gives service points for temple activities, Rabbi will sign the form. Contact Marilyn Freund to volunteer!



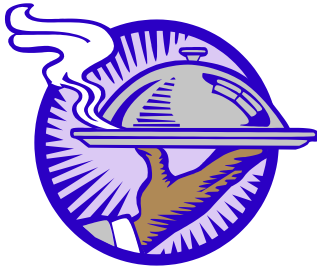
Congregation Emeth is committed to helping feed the needy
on the third Thursday of each month

from 4:00-7:00 p.m.

Lord's Table

St. Mary Catholic Parish

11 First Street, Gilroy



Our next date is: **September 15**

Children accompanied by parents are welcome!

For more information, contact Sandra Jackson

at oursash@yahoo.com



Congregation Emeth's Annual

Progressive Dinner

Saturday, September 17

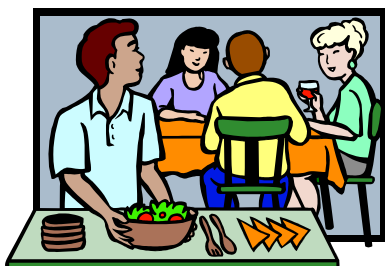
The evening will begin at the home of one of our member families
and “progress” to other members’ homes
where we will be enjoying different courses and culinary delights!

Upon reserving your space, you will be assigned to one of the hosts and asked
to contribute to that particular course.

If you are willing and able to host one of the courses at your home, please volunteer!
You will be assigned a team of contributors to help, so no extra cooking is required!

We will also have Emet Dor Kef teens available for babysitting at the first house so
our young parents can participate in the Progressive Dinner! RSVP for babysitting
to rachelsummer@aol.com.

**This is always a very popular adult-oriented event,
and space is limited, so make your reservation today!
(Adult members only)**



RSVP to Patty Baggese or for more information:
pbaggese@garlic.com or 408-842-6876



Interfaith CommUNITY of South County presents . . .

The Church of Jesus Christ of Latter-day Saints

Faith of Our Neighbors: **MORMON**

*An educational series
aimed at discovery and
response to questions
related to our faiths.*

Learn about The Church of Jesus Christ of Latter-day Saints
(aka, the Mormons, as some refer to them...
they're surprisingly more Christian than people really know)
its beliefs, organizational structure and contributions to
society.

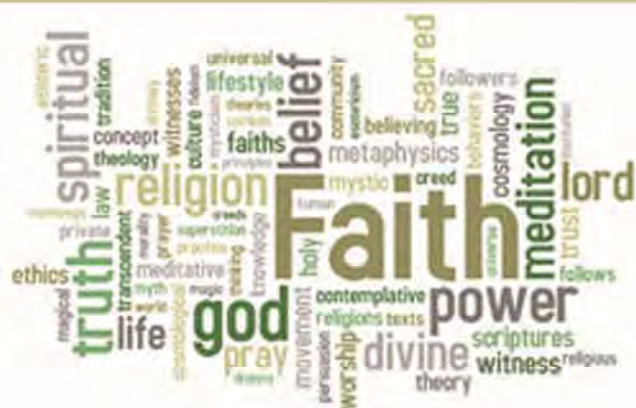
A short presentation will be followed by an open Q&A session
moderated by a panel of interfaith clergy.

When: Sunday, September 18th 2016, 4:00pm-6:00pm

Where: Morgan Hill Council Chambers
17555 Peak Avenue
Morgan Hill, CA 95037

**** This event is free of charge and open to the public.**

Please email inquiries to: InterfaithCommUNITY.org@gmail.com
or visit us at www.facebook.com/InterfaithCommUNITYofSouthCounty





Sisterhood

Volunteers are needed for a mitzvah ~

**Come and help assemble
Rosh Hashanah baskets
for those who are not able
to attend services**

**Tuesday, September 27 at noon
Lunch will be served!**

Marilyn Freund's home
17460 Montoya Circle, Morgan Hill
Please RSVP to Marilyn at
freund.marilyn@gmail.com or [408 776-1817](tel:4087761817)



Come Home for the High Holy Days...
Come Home to Congregation Emeth



Schedule of Services

Sunday, Oct. 2 at 7:30 p.m.

Erev Rosh Hashanah service and Oneg (reception) hosted by Sisterhood

Monday, Oct. 3 at 9:30 a.m.

Rosh Hashanah service. Children's programs are available beginning at 10:00 a.m. for those who pre-register by submitting a registration form.

1:00 p.m. (Or following services) Tashlich and Potluck Picnic
Lunch at Anderson County Park (See separate flyer)

Tuesday, Oct. 11 at 7:30 p.m.

Erev Yom Kippur service (Kol Nidre)

Wednesday, Oct. 12 at 9:30 a.m.

Yom Kippur service. Children's programs are available beginning at 10:00 a.m. for those who pre-register by submitting a registration form.

3:30 p.m. Study Session

4:30 p.m. Yizkor Memorial Service

5:00 p.m. Concluding (Mincha and Neilah) services

After Neilah Sounding of the Shofar & Full Break-the-Fast (See separate flyer)



17835 Monterey Street
Morgan Hill, CA 95037
408-778-8200
www.emeth.net

Children's High Holidays Program Registration

Congregation Emeth provides an educational and fun program for children, ages 4 - third grade. While there is no separate fee for this service for those who are preregistered, parents who do not pre-register their children will be billed \$18 per child. Avoid a registration fee by completing and returning this form by September 26.

The program will start at 10:00 am on both Rosh Hashanah and Yom Kippur morning. The program will include stories, songs, crafts, and snacks (donations welcome—please check with our principal if you plan to donate something: principal.emeth@gmail.com).

Please provide the information below for each child:

		Register Child	
Child's Name	Age	Rosh Hashanah	Yom Kippur

Parents names (Who will be in the sanctuary?)

Rosh Hashanah: _____

Yom Kippur: _____

Any allergies to snack foods: _____

Additional information: Please return this form by September 26, 2016
Mail to: Children's HHD Program
Congregation Emeth
17835 Monterey St., Morgan Hill, CA 95037
If you have questions, please call 408-778-8200 or email
events@emeth.net.

Emeth Tashlich and Potluck Lunch

Anderson County Park

Live Oak Group Area

October 3, 2016

1:00 ~ 1:15 or after Rosh Hashanah morning services ~ Gathering (potluck set up and introductory story for the children, Tashlich at Turtle Rock)

1:15 Kiddush and Challah, followed by Potluck Lunch

(Dairy or vegetarian ~ no meat)

2:30 Tashlich: blessings, songs, casting crumbs, etc.

Tashlich, the symbolic casting away of sins, is a traditional part of the *teshuvah*, repentance, Jewish people practice during the Days of Awe. Toss your "sins" (breadcrumbs) into Coyote Creek and watch them float away during this cleansing, contemplative ritual. Afterward, begin the new year with pleasure as we share a community dinner under the oak and sycamore trees beside the creek. (There are wonderful hiking trails; feel free to come early to enjoy the great outdoors!)



The picnic area by the creek is along Cochrane road, just beyond the Malaguerra/Cochrane intersection. The parking lot is visible from the road, and the picnic tables are just beyond the bathrooms, and visible from the parking lot. If you get to the Anderson Dam entrance, you've gone too far.


For a map of the entire Anderson Park:

[https://www.sccgov.org/sites/parks/parkfinder/Documents/Anderson-Broch-qxd Anderson-Broch-qxd.pdf](https://www.sccgov.org/sites/parks/parkfinder/Documents/Anderson-Broch-qxd%20Anderson-Broch-qxd.pdf)

Water shoes and a change of dry clothing are recommended for young children (or adults) who won't be able to resist the challenge of running water and damp rocks.

Young families may enjoy reading Tashlich at Turtle Rock, by Susan Schnur and Anna Schnur-Fishman, to prepare for this event.

For further information, contact MariaElena Jarson, Coordinator, jarsonfamily@gmail.com, or Michael Oshan, Ritual Chair, michaeloshan@sbcglobal.net.



This year we are planning to have a
wonderful and complete Break the Fast!
We welcome casseroles and kugels, salads
and fish dishes (dairy products only).

Please RSVP to Marby at
marbles@garlic.com
and let her know what you will be bringing.
Food can be put in the refrigerator when you
come to Kol Nidre, to morning services,
or to afternoon services.

We want to encourage the entire
congregation to celebrate together!



High Holiday Machzor Dedication Opportunity

Congregation Emeth is taking dedications for our Machzorim (prayer books for the High Holidays), which were first used last year.

This is a wonderful way to honor an accomplishment of a friend or loved one, celebrate a Bar or Bat Mitzvah, or in memory of those we have lost. The donation for each dedication is \$40, which will provide book plates in the High Holiday Machzors.

Please fill out the form below, and mail it with your check made out to Congregation Emeth to:

Machzor Dedication
Congregation Emeth
17835 Monterey Street
Morgan Hill, CA 95037

Please indicate on the notation line that it is for Machzor Dedication.

Name _____
Address _____
City/State/Zip _____
Phone _____

Please make your check out to
“Congregation Emeth” and indicate
that it is for a Machzor Dedication.

Thank you!

☐ In Honor of _____
☐ In Memory of _____

Remember your loved one in perpetuity
Dedicate a plaque on the
Congregation Emeth Memorial Board
on the wall of our sanctuary



The price of each plaque is \$360

When inscribing a name you may either inscribe an English name, a Hebrew name or both. If you need help with the Hebrew spelling, please contact Rabbi Debbie Israel.

The inscription will also include both the Hebrew date of the Yahrzeit and the Gregorian date. The Rabbi can help with this as well.

**Each memorial plaque will be lit for the entire Hebrew month
 in commemoration of the Yahrzeit.**

Order Form

Please use one form for each memorial plaque

Name of Deceased (English) _____

(Hebrew male) _____ Ben _____

(Hebrew female) _____ Bat _____

Date of Death (Gregorian) _____

(Hebrew) _____

Remembered by _____

Please enclose a check for \$360 for each plaque ordered and send to:

Congregation Emeth
 Memorial Board
 17835 Monterey Street
 Morgan Hill, CA 95037



SHABBAT HOSTS NEEDED

For the coming year!

Sept 9 ⁽¹⁾ - Membership
Committee

Oct 14 ⁽⁴⁾ - Board

Oct 21 ⁽⁴⁾

Oct 28 ⁽³⁾ - Teren-
Foster

Nov 4 ⁽³⁾ - Altman/Palm

Nov 11 ⁽³⁾ - Gardner

Nov 19 ⁽²⁾ - Gallant

Dec 10 ⁽²⁾ - N. Abmont

Dec 16 ⁽⁴⁾

Jan 6 ⁽³⁾ - Maskell

Jan 14 ⁽²⁾ - Thompson

Jan 27 ⁽³⁾

Feb 3 ⁽³⁾

Feb 17 ⁽³⁾

Feb 25 ⁽²⁾

Mar 18 ⁽²⁾

Apr 7 ⁽³⁾

Apr 15 ⁽²⁾

Apr 28 ⁽³⁾

May 13 ⁽²⁾

May 26 ⁽³⁾

Jun 2 ⁽³⁾

Jun 10 ⁽²⁾

Jun 23 ⁽³⁾

Please select at least one Shabbat service
when your family will be the designated hosts.

The Shabbat hosts provide challah and flowers and time before and after the service for setup and cleanup. Why not select a special occasion (for example, anniversary and/or birthday) to host and celebrate with your Emeth family?

**Send your preference of date(s) to Debbie Zajac
admin@emeth.net or (408) 778-8200**



Notes: (1) Erev Shabbat Service
(2) TNT (Torah 'N Tefilah) Morning Service
(3) FNL Shabbat Service
(4) Shabbat Potluck Dinner





Descriptions of Emeth Services

All evening services begin at 7:15 pm. All Erev Shabbat (evening) dinners begin at 6:15 pm.

***Shabbat Short 'N Sweet:** An informal short Erev Shabbat (Friday evening) service. Learn the meaning of the prayers and discuss the Torah portion of the week. Rabbi led, this service is especially appropriate for children of all ages as well as adults. It is part of the Religious School curriculum. Prayers for healing and Mourners Kaddish are included. It is preceded by a community dinner with Shabbat rituals.

***Friday Night Live:** This Erev Shabbat (Friday evening) service highlights Kabbalat Shabbat, the introductory prayers. This is a high energy, musical, abbreviated service appropriate for children of all ages as well as adults. It is part of the Religious School curriculum. Prayers for healing and Mourners Kaddish are included. It is preceded by a potluck dinner with Shabbat rituals.

***TNT – Torah 'N T'filah:** This Erev Shabbat (Friday evening) service includes reading the weekly Torah portion and a sermon. It is a complete Shabbat service.

***Erev Shabbat Services:** Complete Friday evening services, without a Torah service.

***Shabbat at Home:** On certain weekends during the year, Congregation Emeth does not have community Shabbat services. Resources are available from the Congregation to facilitate a meaningful Shabbat dinner and Torah discussion in your home.

***Shabbat Morning Service:** A traditional Shabbat morning service with Torah and Haftarah readings, and Kiddush lunch to follow. Attire is synagogue traditional (business casual to semi-formal).

THANK YOU TO OUR DONORS

JULY 2016

(donations received after July 31 will be acknowledged in the October flyers)

Donations to Congregation Emeth are gratefully accepted. Our membership contributions cover only the minimum annual expenses, not the full costs of running a synagogue. Additional gifts are always needed to help keep our activities going.

Donations of money can be by either check or credit card. Donations can also be made in other forms such as property or securities (like appreciated stocks). All are of course tax deductible. Donation information and a form can be found on our website:

http://www.emeth.net/images/PDFs/forms/donation_form.pdf

ALLEN WISOTSKY EDUCATION FUND

The Scholarship Fund assists the children in our Beit Sefer (religious schools) with need-based tuition scholarships.

Marilyn & Barry Freund, in memory of Ruth Simon and Sarah Steinway

BETTY MEYER CAMBERSHIP FUND

Reform Jewish summer camps and trips to Israel are valuable means for children to reinforce their Jewish identity. Your contribution will help a student attend who might not otherwise have this opportunity.

Patty & Baggese, in memory of Betty Meyer and Beth Baggese
In honor of Rabbi Israel & Jerry Dubin's 50th anniversary
Norma & Dr. Jonathan Hyman
Patty & Jim Baggese
Racquel & Dr. Jacobo Goldberg

GENERAL FUND

Contributions to this fund offset everyday operating expenses for religious school, adult education, youth activity, ritual, programming, etc. thus keeping dues and tuition lower.

Kathy & Rick Coencas, in memory of Charles and Dorothy Coencas
Maureen Chassy, automobile donation
Tracy & Scott Valentine, in honor of Aliya Glatt's bat mitzvah

RABBI'S DISCRETIONARY FUND

This fund enables our Rabbi to make donations to people in need, arrange for programs that she deems worthy, and contribute to other charitable causes she wishes to support. The fund is never used for the Rabbi's personal benefit.

In honor of Rabbi Israel & Jerry Dubin's 50th anniversary
Joanne Donsky & Stuart Oremland
Judith & Allan Mandell

ADDITIONAL DONATION OPPORTUNITIES

ADULT EDUCATION COMMITTEE - *Donations to Adult Education support the creation of programs and courses of studies geared for adults. Annual mainstays for this program include adult Hebrew classes, Shabbat in the Redwoods Scholar in Resident, the Adult B'nai Mitzvah program, lectures and films.*

AUTOMOBILE DONATION

BEIT SEIFER SCHOLARSHIP FUND - *The Scholarship Fund assists the children in our Beit Sefer, religious schools, with need-based tuition scholarships.*

BIMAH FUND

B'NEI MITZVAH KIDDUSH FUND

BUILDING FUND

We have owned our own building since 2008. Your contribution will support physical improvements to the building and/or will help us pay down our mortgage. We also issue bonds to members and friends of Emeth. For more information about our Emeth bonds, please contact our president, president@emeth.net.

CAPITAL CAMPAIGN

CEMETERY FUND - *We maintain a Jewish section of a local cemetery. Your donation will go toward upkeep of the cemetery.*

COMMUNITY DINNER DONATIONS

Part of Emeth's culture is coming together for a Shabbat potluck or community dinner twice a month, prior to Shabbat Short 'N Sweet services. Your contribution enables us to continue this community building.

HIGH HOLIDAY DONATION

Our High Holiday liturgy reminds us that we have the power and obligation to make a positive different in the world by performing acts of tzedakah, righteousness. Your contribution to High Holiday donations will help enhance our vibrant congregation in the ongoing work of our Rabbi, our educational programs, and maintenance of our sanctuary.

HIGH HOLIDAY MACHZOR

KARI MUNOWITCH MEMORIAL

LIBRARY FUND - *This fund helps maintain our library and enables us to purchase new books for children and adults.*

LORD'S TABLE

OUTREACH

PLAYGROUND

PRAYER BOOK

This fund purchases new worship materials, including our Shabbat prayerbook, Mishkan T'fila and the new Reform High Holiday Machzor.

RELIGIOUS SCHOOL

Funds programs and equipment for the Religious School, helping to offset expenses not covered by school tuition

RITUAL FUND - *Provides funding for cantorial soloists, purchasing supplies to build our Sukkah, and offering special holiday programs, such as our Purim carnival and Chanukah community celebration.*

RACHAMIM FUND

Funds and defrays costs for our loving support of members by providing meals and other services for families in need, including new parents, members who are ill, and members who have sustained a loss of a loved one.

SISTERHOOD

Sisterhood assists with special holiday receptions, develops a booklet to assist families with upcoming bar/bat mitzvah celebrations, offers programs to the women of Congregation Emeth, and provides philanthropic support to a variety of causes. Donations help fund each year's programs.

SOCIAL ACTION

This committee supports a broad range of activities to help enable congregants to repair the world including serving a monthly meal at the Lord's Table for the homeless.

SPECIAL EVENTS**TORAH FUND**

Congregation Emeth has two Torahs. Funds are occasionally needed for repairs to our sacred scrolls.

WINE EVENT DONATION**YOUTH GROUP (EMET DOR KEF)**

Emet Dor Kef members annually participate in both a retreat and a field trip to Jewish Los Angeles. The teens work hard to raise funds to cover expenses for these special events, but your additional support will make a difference.