

5775
2014

October

tishri
cheshvan

KAR-BEN
PUBLISHING

SUNDAY	MONDAY	TUESDAY	WEDNESDAY	THURSDAY	FRIDAY	SATURDAY
			1 7 tishri	2 8 tishri	3 9 tishri NO CHAI SCHOOL KOL NIDRE	4 10 tishri YIZKOR YOM KIPPUR
5 11 tishri BUILD SUKKAH WITH EDK	6 12 tishri	7 13 tishri HEBREW SCHOOL	8 14 tishri EREV SUKKOT	9 15 tishri SUKKOT	10 16 tishri CHAI SCHOOL "Pizza in the Hut" Community Dinner in Sukkah COMBINED SNS/FNL SUKKOT	11 17 tishri CHOL HAMOED
12 18 tishri INTERMEDIATE DAY	13 19 tishri COLUMBUS DAY INTERMEDIATE DAY	14 20 tishri HEBREW SCHOOL SPECIAL BOARD MEETING INTERMEDIATE DAY	15 21 tishri HOSHANAH RABBAH	16 22 tishri LORD'S TABLE SHEMINI ATZERET YIZKOR	17 23 tishri CHAI SCHOOL POTLUCK SNS/FNL/ SIMCHAT TORAH CONFIRMATION SIMCHAT TORAH <i>Vezot Habrachah</i>	18 24 tishri <i>Bereshit</i>
19 25 tishri	20 26 tishri	21 27 tishri HEBREW SCHOOL EMETH READS	22 28 tishri EMET DOR KEF	23 29 tishri BOARD MEETING	24 30 tishri CHAI SCHOOL ROSH CHODESH	25 1 cheshvan Matthew Ogden Bar Mitzvah Noach ROSH CHODESH
26 2 cheshvan	27 3 cheshvan	28 4 cheshvan HEBREW SCHOOL	29 5 cheshvan	30 6 cheshvan	31 7 cheshvan NO CHAI SCHOOL	

5775
2014

November

cheshvan
kislev

KAR-BEN
PUBLISHING

SUNDAY	MONDAY	TUESDAY	WEDNESDAY	THURSDAY	FRIDAY	SATURDAY
						1 8 cheshvan  TNT SERVICE <i>Lech Lecha</i>
2 9 cheshvan SCATTERED AMONG THE NATIONS, 3-5 pm	3 10 cheshvan	4 11 cheshvan HEBREW SCHOOL ELECTION DAY	5 12 cheshvan EMET DOR KEF	6 13 cheshvan	7 14 cheshvan  NO CHAI SCHOOL FNL	8 15 cheshvan  Vayera
9 16 cheshvan	10 17 cheshvan	11 18 cheshvan NO HEBREW SCHOOL VETERANS DAY	12 19 cheshvan	13 20 cheshvan BOARD MEETING	14 21 cheshvan  CHAI SCHOOL COMMUNITY DINNER as SISTERHOOD COOKBOOK TASTING SNS	15 22 cheshvan  Adult Social: Silicon Valley Jewish Film Festival Chaye Sarah
16 23 cheshvan	17 24 cheshvan	18 25 cheshvan HEBREW SCHOOL	19 26 cheshvan EMET DOR KEF	20 27 cheshvan LORD'S TABLE	21 28 cheshvan  CHAI SCHOOL SNS	22 29 cheshvan  Toldot
23 1 kislev ROSH CHODESH	24 2 kislev	25 3 kislev NO HEBREW SCHOOL	26 4 kislev	27 5 kislev THANKSGIVING DAY	28 6 kislev  NO CHAI SCHOOL	29 7 kislev  TNT Vayetze
30 8 kislev						



Shabbat Information for the Month of October, 2014

Shabbat Kol Nidre

October 3-4 10 Tishri

Torah portion: Yom Kippur
Devarim (Deuteronomy) 29:9-14; 30:11-20
Friday evening candle lighting: 6:29
Saturday night Havdallah: 7:24

Kol Nidre Service, Friday 7:30 PM
Yom Kippur Service,
Saturday, 9:30 AM
Mark Levy, Cantorial Soloist

Shabbat Bereishit- Simchat Torah

October 17-18 24 Tishri

Bereishit (Genesis) 1:1-6:8
Friday evening candle lighting: 6:09
Saturday night Havdallah: 7:04

Community Dinner 6:30 PM
Shabbat Short 'N Sweet/
Friday Night Live 7:15 PM
Simchat Torah Observed/Confirmation
Angela Gold, Cantorial Soloist

Shabbat Chol Hamoed Sukkot

October 10-11 17 Tishri

Shemot (Exodus) 33:12-34:26
Friday evening candle lighting: 6:19
Saturday night Havdallah: 7:14

Community Dinner in Sukkah 6:30 PM
Shabbat Short 'N Sweet/
Friday Night Live 7:15 PM
Mark Levy, Cantorial Soloist

Shabbat Noach

October 24-25 1 Cheshvan

Bereishit (Genesis) 6:9-11:32
Friday evening candle lighting: 6:00
Saturday night Havdallah: 6:56

Shabbat Morning Service and Bar Mitzvah
of Matthew Ogden - 10:00 AM
Angela Gold, Cantorial Soloist



Shabbat Lech Lecha

Oct 31-Nov 1 3 Tishri

Bereishit (Genesis) 12:1-17:27
Friday evening candle lighting: 5:52
Saturday night Havdallah: 6:49

TNT - Saturday 10:00 AM
Mark Levy, Cantorial Soloist



Descriptions of Emeth Services

All evening services begin at 7:15 pm. All morning services begin at 10:00 am.

***Shabbat Morning Service/TNT Torah 'N T'filah:** This service includes reading the weekly Torah portion and a sermon or teaching from the Rabbi. It is a complete Shabbat service.

***Friday Night Live:** This Erev Shabbat (Friday evening) service highlights the music of Shabbat. It is a full Shabbat service (no Torah service) with a sermon or teaching from the Rabbi.

***Shabbat Short 'N Sweet:** An informal short Erev Shabbat (Friday evening) service. Learn the meaning of the prayers and discuss the Torah portion of the week. Rabbi led, this service is especially appropriate for children of all ages as well as adults. It is part of the Religious School curriculum. Prayers for healing and Mourners Kaddish are included. It is preceded by a community dinner with Shabbat rituals.



October Children & Youth Education Programs

Tuesday Programs

October 7, 14, 21, 28

Hebrew School

4:00 -6:00 PM Classroom time

Thursday Programs

Emet Dor Kef (The Fun Generation)

Sukkah Building Sunday, October 5 at 1:30 PM

7:30-9:00 PM Classroom time

October 22

Friday Programs

October 10*, 17, 24

Chai School

5:00 - 6:30 PM Classroom time

***Parent orientation and open Education Committee meeting
at 5:15 PM**

For education program information, please contact
Debbie Zajac at admin@emeth.net or (408) 778-8200



Come Home for the High Holy Days... Come Home to Congregation Emeth



Schedule of Services

Wednesday, Sept. 24 at 7:30 p.m.

Erev Rosh Hashanah service and Oneg (reception) hosted by Sisterhood

Thursday, Sept. 25 at 9:30 a.m.

Rosh Hashanah service. Childcare and Children's programs are available beginning at 10:15 a.m. for those who pre-register by submitting a registration form (coming soon).

Friday, Oct. 3 at 7:30 p.m.

Erev Yom Kippur service (Kol Nidre)

Saturday, Oct. 4 at 9:30 a.m.

Yom Kippur service. Childcare and Children's programs are available beginning at 10:15 a.m. for those who pre-register by submitting a registration form (coming soon).

3:30 p.m. Study Session

4:30 p.m. Yizkor Memorial Service

5:00 p.m. Concluding (Mincha and Neilah) services

6:30 p.m. Sounding of the Shofar & Break-the-Fast



Yom Kippur

Swab a Cheek, Inscribed for Life

Perform the *ultimate* mitzvah...

Bone Marrow Registration Drive

- October 4, 2014 at approximately 12:30 pm (immediately following Yom Kippur services) at Congregation Emeth
- Consent forms will be available to fill out at the event. The swabbing and paperwork will take only a few minutes per person.
- To get more information or to sign up to volunteer, contact Geoff Jackson, at ggj49@yahoo.com, 408-629-8274.

...Swab your cheek at our bone marrow recruitment drive this Yom Kippur!



A SIMPLE CHEEK SWAB IS ALL IT TAKES! For many children and adults suffering from leukemia, lymphoma and other blood related diseases, the only hope for a cure is a bone marrow transplant. Join the registry today and you could save a life tomorrow.

Eligible donors must be between the ages of 18-60 and in general good health, meet the guidelines, and be willing to donate to any patient, at any time, worldwide.

If you are unable to attend, you can register to be a donor online by visiting www.giftoflife.org



High Holiday Machzor Dedication Opportunity

Congregation Emeth is taking dedications for our new Machzorim (prayer books for the High Holidays.).

This is a wonderful way to honor an accomplishment of a friend or loved one, celebrate a Bar or Bat Mitzvah, or in memory of those we have lost. The donation for each dedication is \$40, which will provide two book plates; one in the Rosh Hashanah Machzor and one in the Yom Kippur Machzor.

Please fill out the form below, and mail it with your check made out to
Congregation Emeth to :

Marby Lee
Attn: Machzor Dedication
15850 La Prenda Ct.
Morgan Hill, CA 95037

Please indicate on the notation line that it is for Machzor Dedication. If you have any further questions, please feel free to contact Marby Lee at 408-779-2824 or marbles@garlic.com.

Name _____
Address _____
City/State/Zip _____
Phone _____

Please make your check out to
“Congregation Emeth” and indicate
that is it for a Machzor Dedication.

Thank you!

☐ In Honor of _____
☐ In Memory of _____



Come help build the Sukkah!



Help us finish our Sukkah-building and decorating
Sunday, October 5



If possible, please bring work gloves, small ladders
(i.e. household step stools work well).

For information or to RSVP contact Arthur Rudin,

gksolar@gmail.com

Come by when you can!



SISTERHOOD GIFT SHOP

*Select from life cycle greeting cards, ritual
items, gifts, jewelry and more*

OPEN ON

FRIDAY, OCTOBER 10

AND

FRIDAY, OCTOBER 24

4:45 – 6:30 P.M.

*Questions – contact Patty at (408) 842-6876
or pbaggese@garlic.com*

*Come on by and
SHOP 'TIL YOU DROP!*



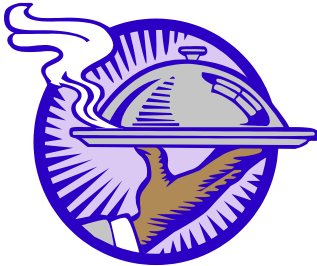
Congregation Emeth is committed to helping feed the needy
on the third Thursday of each month

from 4:00-7:00 p.m.

Lord's Table

St. Mary Catholic Parish

11 First Street, Gilroy



Our next date is: **October 16**

Children accompanied by parents are welcome!

For more information, contact Sandra Jackson

at oursash@yahoo.com



Please join us for the next

“Great Reads with a Jewish Theme”
Tuesday, October 21, 7:00 – 8:30 P.M.
at Congregation Emeth



We will be continuing the discussion from the Yom Kippur Peace Panel and Service as we discuss our book,

The Faith Club: A Muslim, A Christian, A Jew -
Three Women Search for Understanding
by Ranya Idliby, Suzanne Oliver and Priscilla Warner (Jun 5, 2007).

All are welcome to join in this discussion, even if you have read none or only part of the book!

RSVP to Wendy Thowdis via email wtinsa@yahoo.com
or call 315-345-6359

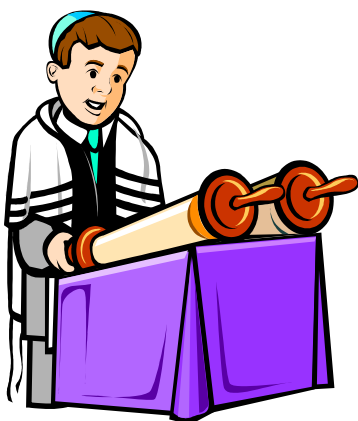


Invites you to attend

Shabbat Morning Services

Saturday, October 25

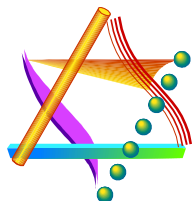
Parshat Noach



**The entire congregation
is invited as
Matthew Ogden
is called to the Torah as
Bar Mitzvah**



**Services begin promptly at 10:00 a.m.
Followed by a light Kiddush lunch
RSVP for lunch to dariaogden@yahoo.com**



**To be held at:
Congregation Emeth
17835 Monterey Street
Morgan Hill**





SHABBAT HOSTS NEEDED

For the coming year!

October 10 ⁽³⁾ Sukkot -
Jarson
October 17 ⁽³⁾ Simchat
Torah - Confirmation
Parents
November 1 ⁽²⁾
November 7 ⁽³⁾
November 29 ⁽²⁾
December 13 ⁽²⁾

December 19 ⁽³⁾ Chanukah
December 26 ⁽³⁾
January 2 ⁽³⁾
January 16 ⁽³⁾
January 31 ⁽²⁾
February 13 ⁽³⁾
February 20 ⁽³⁾
March 6 ⁽³⁾ Purim
March 21 ⁽²⁾

April 11 ⁽²⁾
April 24 ⁽³⁾
May 9 ⁽⁴⁾
May 22 ⁽³⁾
June 5 ⁽³⁾
June 12 ⁽¹⁾
June 19 ⁽³⁾

Please select at least one Shabbat service
when your family will be the designated hosts.

The Shabbat hosts provide challah and flowers and time before and after the service for setup and cleanup. Why not select a special occasion (for example, anniversary and/or birthday) to host and celebrate with your Emeth family?

Send your preference of date(s) to Debbie Zajac
admin@emeth.net or (408) 778-8200



- Notes:
- (1) Erev Shabbat Service
 - (2) TNT (Torah 'N Tefilah) Morning Service
 - (3) FNL Shabbat Service
 - (4) TNT – Shabbat in the Redwoods





Descriptions of Emeth Services

All evening services begin at 7:15 pm. All Erev Shabbat (evening) dinners begin at 6:30 pm.

***Shabbat Short 'N Sweet:** An informal short Erev Shabbat (Friday evening) service. Learn the meaning of the prayers and discuss the Torah portion of the week. Rabbi led, this service is especially appropriate for children of all ages as well as adults. It is part of the Religious School curriculum. Prayers for healing and Mourners Kaddish are included. It is preceded by a community dinner with Shabbat rituals.

***Friday Night Live:** This Erev Shabbat (Friday evening) service highlights Kabbalat Shabbat, the introductory prayers. This is a high energy, musical, abbreviated service appropriate for children of all ages as well as adults. It is part of the Religious School curriculum. Prayers for healing and Mourners Kaddish are included. It is preceded by a potluck dinner with Shabbat rituals.

***TNT – Torah 'N T'filah:** This Erev Shabbat (Friday evening) service includes reading the weekly Torah portion and a sermon. It is a complete Shabbat service.

***Erev Shabbat Services:** Complete Friday evening services, without a Torah service.

***Shabbat at Home:** On certain weekends during the year, Congregation Emeth does not have community Shabbat services. Resources are available from the Congregation to facilitate a meaningful Shabbat dinner and Torah discussion in your home.

***Shabbat Morning Service:** A traditional Shabbat morning service with Torah and Haftarah readings, and Kiddush lunch to follow. Attire is synagogue traditional (business casual to semi-formal).

Scattered Among the Nations:

Unique Jewish Communities in Remote Regions of the World



Join Congregation Emeth for a special presentation on the isolated Jewish communities of Africa, Asia, South America, and more. Learn how they maintain their traditions apart from the mainstream Jewish community, struggling to preserve Jewish practice and culture, amidst often harsh surroundings.

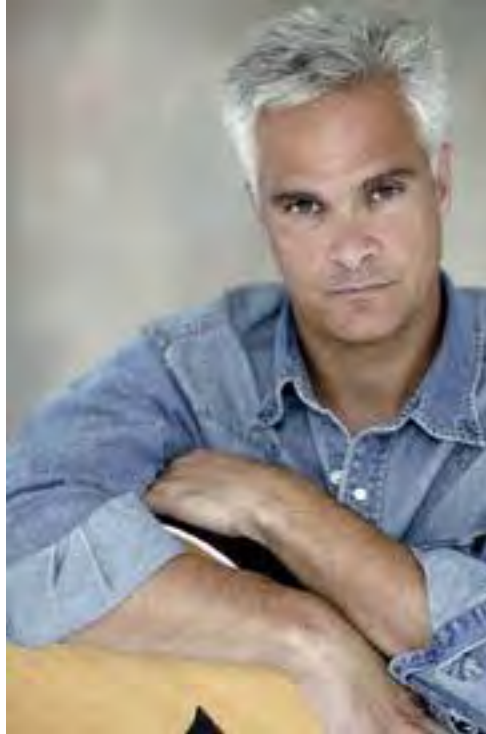
Who: Bryan Schwartz, writer/photographer

When: Sunday, November 2, 4-6 pm

Where: Congregation Emeth,
17835 Monterey Street, Morgan Hill

Open to the public. No RSVP required.

Craig Taubman
Jewish Singer/Songwriter/Producer
Coming to Congregation Emeth!
Friday Night Live, Friday, January 23, 2015



This will be a memorable service for the entire family!

Craig Taubman was one of the creators of the high energy “Friday Night Live” service format, and we use his beautiful melodies such as those for Romenu, L’cha Dodi, Ahavat Olam, and Hashkiveinu at our own services.

We have a variety of Craig’s CD’s in Gift Shop! You may purchase CD’s in exchange for a donation to help defray costs. (Retail price of the CD’s are \$14.95). We want every congregant to be familiar with Craig’s music, so please purchase a CD and listen as a family. Checks for CD’s should be made payable to Congregation Emeth, Rabbi’s Fund.

For more information about Craig, go to <http://craignco.com/v3/wordpress/about-craig/>. Also available are copies of *The Art of Return*, readings for the High Holiday season, produced by Craig and a gift for our congregants. Please take one!

THANK YOU TO OUR DONORS

AUGUST 2014

Donations to Congregation Emeth are gratefully accepted. Our membership contributions cover only the minimum annual expenses, not the full costs of running a synagogue. Additional gifts are always needed to help keep our activities going.

Donations of money can be by either check or credit card. Donations can also be made in other forms such as property or securities (like appreciated stocks). All are of course tax deductible. Donation information and a form can be found on our website:

http://www.emeth.net/images/PDFs/forms/donation_form.pdf

GENERAL FUND

Contributions to this fund offset everyday operating expenses for religious school, adult education, youth activity, ritual, programming, etc. thus keeping dues and tuition lower.

Susan Meyers & Michael Oshan, in memory of Dorothy Meyers

ALLEN WISOTSKY EDUCATION FUND

The Scholarship Fund assists the children in our Beit Sefer (religious schools) with need-based tuition scholarships.

Joyce & Jay Maskell, School scholarship donation
Lindy Wisotsky

In memory of Allen Wisotsky

In honor of Burruss Weiss' 90th birthday

Marby & Bryson Lee, School scholarship donation

Maria & Jonathan Walters, School scholarship donation

RABBI'S DISCRETIONARY FUND

This fund enables our Rabbi to make donations to people in need, arrange for programs that she deems worthy, and contribute to other charitable causes she wishes to support. The fund is never used for the Rabbi's personal benefit.

Cathy & Pi Silverstein, In honor of Rabbi Israel

Denise & Joe Abmont, Donation for video equipment

Rena Dubin & Harlan Glatt, Donation for video equipment

Steve Miller, In honor of Rabbi Israel

SISTERHOOD

Sisterhood assists with special holiday receptions, develops a booklet to assist families with upcoming bar/bat mitzvah celebrations, offers programs to the women of Congregation Emeth, and provides philanthropic support to a variety of causes. Donations help fund each year's programs.

Steve Miller, Sisterhood donation

YOUTH GROUP (EMET DOR KEF)

Emet Dor Kef members annually participate in both a retreat and a field trip to Jewish Los Angeles. The teens work hard to raise funds to cover expenses for these special events, but your additional support will make a difference.

Steve Miller, Emet Dor Kef donation

ADDITIONAL DONATION OPPORTUNITIES

ADULT EDUCATION COMMITTEE - *Donations to Adult Education support the creation of programs and courses of studies geared for adults. Annual mainstays for this program include adult Hebrew classes, Shabbat in the Redwoods Scholar in Resident, the Adult B'nai Mitzvah program, lectures and films.*

BETTY MEYER CAMBERSHIP FUND

Reform Jewish summer camps and trips to Israel are valuable means for children to reinforce their Jewish identity. Your contribution will help a student attend who might not otherwise have this opportunity.

BUILDING FUND

We have owned our own building since 2008. Your contribution will support physical improvements to the building and/or will help us pay down our mortgage. We also issue bonds to members and friends of Emeth. For more information about our Emeth bonds, please contact our president, president@emeth.net.

OUTREACH

PRAYER BOOK

This fund purchases new worship materials, including our Shabbat prayerbook, Mishkan T'fila and the new Reform High Holiday Machzor.

RACHAMIM FUND

Funds and defrays costs for our loving support of members by providing meals and other services for families in need, including new parents, members who are ill, and members who have sustained a loss of a loved one.

RELIGIOUS SCHOOL

Funds programs and equipment for the Religious School, helping to offset expenses not covered by school tuition

SOCIAL ACTION

This committee supports a broad range of activities to help enable congregants to repair the world including serving a monthly meal at the Lord's Table for the homeless.

TORAH FUND

Congregation Emeth has two Torahs. Funds are occasionally needed for repairs to our sacred scrolls.

WINE EVENT DONATION

AUTOMOBILE DONATION

HIGH HOLIDAY DONATION

Our High Holiday liturgy reminds us that we have the power and obligation to make a positive different in the world by performing acts of tzedakah, righteousness. Your contribution to High Holiday donations will help enhance our vibrant congregation in the ongoing work of our Rabbi, our educational programs, and maintenance of our sanctuary.

KARI MUNOWITCH MEMORIAL

COMMUNITY DINNER DONATIONS

Part of Emeth's culture is coming together for a Shabbat potluck or community dinner twice a month, prior to Shabbat Short 'N Sweet services. Your contribution enables us to continue this community building.

LIBRARY FUND - *This fund helps maintain our library and enables us to purchase new books for children and adults.*

BEIT SEIFER SCHOLARSHIP FUND - *The Scholarship Fund assists the children in our Beit Sefer, religious schools, with need-based tuition scholarships.*

RITUAL FUND - *Provides funding for cantorial soloists, purchasing supplies to build our Sukkah, and offering special holiday programs, such as our Purim carnival and Chanukah community celebration.*

CEMETERY FUND - *We maintain a Jewish section of a local cemetery. Your donation will go toward upkeep of the cemetery.*