

5775  
2014

# November

cheshvan  
kislev

**KAR-BEN**  
PUBLISHING

SUNDAY	MONDAY	TUESDAY	WEDNESDAY	THURSDAY	FRIDAY	SATURDAY
						<b>1</b> 8 cheshvan  TNT SERVICE  <i>Lech Lecha</i>
<b>2</b> 9 cheshvan SCATTERED AMONG THE NATIONS, 4-6 pm	<b>3</b> 10 cheshvan DEADLINE FOR NOV 9 FILM FESTIVAL RSVPs	<b>4</b> 11 cheshvan HEBREW SCHOOL  ELECTION DAY	<b>5</b> 12 cheshvan EMET DOR KEF	<b>6</b> 13 cheshvan	<b>7</b> 14 cheshvan  NO CHAI SCHOOL FNL	<b>8</b> 15 cheshvan   Vayera
<b>9</b> 16 cheshvan SISTERHOOD SOCIAL: SILICON VALLEY JEWISH FILM FESTIVAL	<b>10</b> 17 cheshvan	<b>11</b> 18 cheshvan NO HEBREW SCHOOL  VETERANS DAY	<b>12</b> 19 cheshvan	<b>13</b> 20 cheshvan MUSSAR CLASS BEGINS 11am-12noon BOARD MEETING	<b>14</b> 21 cheshvan  CHAI SCHOOL COMMUNITY SHABBAT DINNER SNS	<b>15</b> 22 cheshvan   Chaye Sarah
<b>16</b> 23 cheshvan	<b>17</b> 24 cheshvan	<b>18</b> 25 cheshvan HEBREW SCHOOL	<b>19</b> 26 cheshvan EMET DOR KEF	<b>20</b> 27 cheshvan MUSSAR CLASS 11am-12noon LORD'S TABLE	<b>21</b> 28 cheshvan  CHAI SCHOOL COMMUNITY POTLUCK SHABBAT DINNER GIFT SHOP OPEN SNS	<b>22</b> 29 cheshvan   Toldot
<b>23</b> 1 kislev ROSH CHODESH	<b>24</b> 2 kislev	<b>25</b> 3 kislev NO HEBREW SCHOOL	<b>26</b> 4 kislev	<b>27</b> 5 kislev  THANKSGIVING DAY	<b>28</b> 6 kislev  NO CHAI SCHOOL	<b>29</b> 7 kislev   Vayetze
<b>30</b> 8 kislev						

5775  
2014

# December

kislev  
tevet

**KAR-BEN**  
PUBLISHING

SUNDAY	MONDAY	TUESDAY	WEDNESDAY	THURSDAY	FRIDAY	SATURDAY
	1 <small>9 kislev</small>	2 <small>10 kislev</small> HEBREW SCHOOL	3 <small>11 kislev</small> EMET DOR KEF	4 <small>12 kislev</small> MUSSAR CLASS 11am-12noon	5 <small>13 kislev</small> CHAI SCHOOL COMMUNITY DINNER SNS	6 <small>14 kislev</small> 
						<i>Vayishlach</i>
7 <small>15 kislev</small>	8 <small>16 kislev</small> SISTERHOOD CHANUKAH PARTY	9 <small>17 kislev</small> HEBREW SCHOOL	10 <small>18 kislev</small>	11 <small>19 kislev</small> MUSSAR CLASS 11am-12noon BOARD MEETING	12 <small>20 kislev</small> CHAI SCHOOL	13 <small>21 kislev</small> TNT 
						<i>Vayeshev</i>
14 <small>22 kislev</small>	15 <small>23 kislev</small>	16 <small>24 kislev</small> HEBREW SCHOOL 	17 <small>25 kislev</small> EDK CHANUKAH PARTY 	18 <small>26 kislev</small> MUSSAR CLASS 11am-12noon LORD'S TABLE 	19 <small>27 kislev</small> CHAI SCHOOL/LATKE DINNER/DOWNTOWN CANDLELIGHTING 	20 <small>28 kislev</small> 
		<i>EREV HANUKKAH</i>	<i>HANUKKAH</i>	<i>HANUKKAH</i>	<i>HANUKKAH</i>	<i>Miketz</i> <i>HANUKKAH</i>
21 <small>29 kislev</small> 	22 <small>30 kislev</small> 	23 <small>1 tevet</small> NO HEBREW SCHOOL 	24 <small>2 tevet</small> 	25 <small>3 tevet</small> LORD'S TABLE <i>CHRISTMAS</i>	26 <small>4 tevet</small> FNL 	27 <small>5 tevet</small> 
<i>WINTER BEGINS</i> <i>HANUKKAH</i>	<i>ROSH CHODESH</i> <i>HANUKKAH</i>	<i>ROSH CHODESH</i> <i>HANUKKAH</i>	<i>HANUKKAH</i>			<i>Vayigash</i>
28 <small>6 tevet</small>	29 <small>7 tevet</small>	30 <small>8 tevet</small> NO HEBREW SCHOOL	31 <small>9 tevet</small>			



# Shabbat Information for the Month of November, 2014

## Shabbat Lech Lecha

Oct 31-Nov 1      8 Cheshvan

Bereishit (Genesis) 12:1-17:27

Friday evening candle lighting: 5:52

Saturday night Havdallah: 6:49

**TNT - Saturday 10:00 AM**

**Mark Levy, Cantorial Soloist**

## Shabbat Toldot

November 21-22      29 Cheshvan

Bereishit (Genesis) 25:19-28:9

Friday evening candle lighting: 4:35

Saturday night Havdallah: 5:34

**Shabbat Short 'N Sweet 7:15 PM**

## Shabbat Vayeira

November 7-8      15 Cheshvan

Bereishit (Genesis) 18:1-22:24

Friday evening candle lighting: 4:45

Saturday night Havdallah: 5:42

**Friday Night Live 7:15 PM**

**Jonathan Marx, Cantorial Soloist**

## Shabbat Vayetzei

November 28-29      7 Kislev

Bereishit (Genesis) 28:10-32:3

Friday evening candle lighting: 4:32

Saturday night Havdallah: 5:32

**Shabbat at Home**

## Shabbat Chaye Sarah

November 14-15      22 Cheshvan

Bereishit (Genesis) 23:1-25:18

Friday evening candle lighting: 4:39

Saturday night Havdallah: 5:37

**Community Dinner/Sisterhood Cookbook**

**Tasting 6:30 PM**

**Shabbat Short 'N Sweet 7:15 PM**



## Descriptions of Emeth Services

**All evening services begin at 7:15 pm. All morning services begin at 10:00 am.**

**\*Shabbat Morning Service/TNT Torah 'N T'filah:** This service includes reading the weekly Torah portion and a sermon or teaching from the Rabbi. It is a complete Shabbat service.

**\*Friday Night Live:** This Erev Shabbat (Friday evening) service highlights the music of Shabbat. It is a full Shabbat service (no Torah service) with a sermon or teaching from the Rabbi.

**\*Shabbat Short 'N Sweet:** An informal short Erev Shabbat (Friday evening) service. Learn the meaning of the prayers and discuss the Torah portion of the week. Rabbi led, this service is especially appropriate for children of all ages as well as adults. It is part of the Religious School curriculum. Prayers for healing and Mourners Kaddish are included. It is preceded by a community dinner with Shabbat rituals.

**\*Shabbat at Home:** On certain weekends during the year, Congregation Emeth does not have community Shabbat services. Resources are available from the Congregation to facilitate a meaningful Shabbat dinner and Torah discussion in your home.



# November Children & Youth Education Programs

## *Tuesday Programs*

November 4, 18

### Hebrew School

4:00 -6:00 PM Classroom time

## *Wednesday Programs*

November 5, 19

### Emet Dor Kef (The Fun Generation)

7:30-9:00 PM Classroom time

## *Friday Programs*

November 14, 21

### Chai School

5:00 - 6:30 PM Classroom time

For education program information, please contact  
Debbie Zajac at [admin@emeth.net](mailto:admin@emeth.net) or (408) 778-8200



# Scattered Among the Nations:

## Unique Jewish Communities in Remote Regions of the World



Join Congregation Emeth for a special presentation on the isolated Jewish communities of Africa, Asia, South America, and more. Learn how they maintain their traditions apart from the mainstream Jewish community, struggling to preserve Jewish practice and culture, amidst often harsh surroundings.

Who: Bryan Schwartz, writer/photographer

When: Sunday, November 2, 4-6 pm

Where: Congregation Emeth,  
17835 Monterey Street, Morgan Hill

Open to the public. No RSVP required.

Join Us For An Emeth Outing To:



## Silicon Valley Jewish Film Festival

**Date:** Sunday, November 9th  
**Dinner:** TBA  
**Films:** *The Woman in No. 6-How Music Saved My Life* (38 min) and  
*The Return of the Violin-an International Award Winning Film* (65 min)  
**Film Time:** 5:00 pm  
**Location:** Camera 12 Theatre, 201 S. 2<sup>nd</sup> Street, San Jose

Those who want to carpool can meet at Emeth at 4:00 pm.

Information about the Silicon Valley film festival can be found at:  
<http://www.svjff.org/filmfest2014.shtml>

Please purchase your tickets at [info@svjff.org](mailto:info@svjff.org),  
(408) 498-0904 or 1-800 838-3006

**RSVP by November 3** to let us know who's coming:  
Marilyn Freund \*82 1 408-776-1817, [freund.marilyn@gmail.com](mailto:freund.marilyn@gmail.com)



As the world's oldest pianist and Holocaust survivor, 109 year-old Alice Herz Sommer shares her views on how to live a long and happy life.



This story of survival—of a people and a violin—traces the history of a Stradivarius violin once owned by the founder of the Israeli Philharmonic Orchestra. Stolen twice, it was eventually purchased by celebrated violinist Joshua Bell.





## **Mussar - Everyday Holiness**

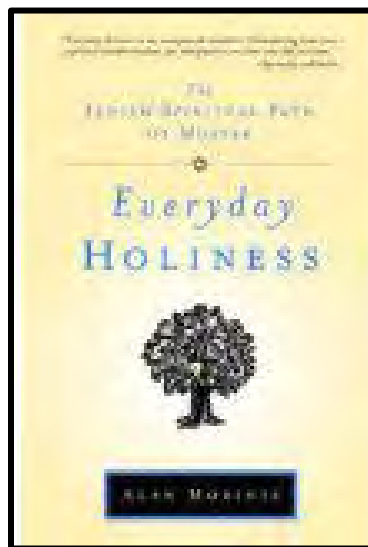
*Mussar* Class beginning in November!

*Mussar* (pronounced moo-sohr) means moral conduct, instruction, or discipline. *Mussar* is a Jewish ethical, educational and cultural movement, which became popular in the 19<sup>th</sup> century.

A significant revival of interest in *Mussar* has occurred in North America in recent years. *Mussar* has been described as “an emerging and growing phenomenon” within Reform Judaism. The class is participatory, with personal directed sharing. One does not have to be Jewish to gain value from the class and all congregants are welcome!

The class will take place Thursdays, 11:00 AM-12:30 PM, in the Emeth Library. November classes are November 6 and 13; December classes are December 4, 11, and 18.

Participants must order and bring to the first class **Everyday Holiness: The Jewish Spiritual Path of Mussar**. It's available on Amazon. (Be sure to order through Amazon Smile so Congregation Emeth benefits!)



Please RSVP to Rabbi Israel, [rabbidebbieisrael@gmail.com](mailto:rabbidebbieisrael@gmail.com), by November 3 so she knows how many students to expect!



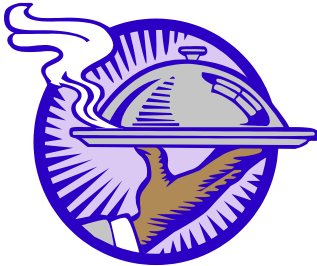
Congregation Emeth is committed to helping feed the needy  
on the third Thursday of each month

from 4:00-7:00 p.m.

Lord's Table

St. Mary Catholic Parish

11 First Street, Gilroy



Our next date is: **November 20**

Children accompanied by parents are welcome!

For more information, contact Sandra Jackson

at [oursash@yahoo.com](mailto:oursash@yahoo.com)





# *SISTERHOOD GIFT SHOP*

*Select from life cycle greeting cards, ritual  
items, gifts, jewelry and more*

*OPEN ON*

*FRIDAY, NOVEMBER 21*

*4:45 – 6:30 P.M.*

*Questions – contact Patty at (408) 842-6876  
or [pbaggese@garlic.com](mailto:pbaggese@garlic.com)*

*Come on by and  
SHOP 'TIL YOU DROP!*



# SHABBAT HOSTS NEEDED

For the coming year!

November 1 <sup>(2)</sup>  
November 7 <sup>(3)</sup> -  
Nehamkin  
November 29 <sup>(2)</sup>  
December 13 <sup>(2)</sup>  
December 19 <sup>(3)</sup> Chanukah  
December 26 <sup>(3)</sup>  
January 2 <sup>(3)</sup>

January 16 <sup>(3)</sup>  
January 31 <sup>(2)</sup>  
February 13 <sup>(3)</sup>  
February 20 <sup>(3)</sup>  
March 6 <sup>(3)</sup> Purim  
March 21 <sup>(2)</sup>  
April 11 <sup>(2)</sup>  
April 24 <sup>(3)</sup>

May 9 <sup>(4)</sup> -  
Thowdis/Kerner  
May 22 <sup>(3)</sup>  
June 5 <sup>(3)</sup>  
June 12 <sup>(1)</sup>  
June 19 <sup>(3)</sup>

Please select at least one Shabbat service  
when your family will be the designated hosts.

The Shabbat hosts provide challah and flowers and time before and after the service for setup and cleanup. Why not select a special occasion (for example, anniversary and/or birthday) to host and celebrate with your Emeth family?

Send your preference of date(s) to Debbie Zajac  
[admin@emeth.net](mailto:admin@emeth.net) or (408) 778-8200



- Notes:
- (1) Erev Shabbat Service
  - (2) TNT (Torah 'N Tefilah) Morning Service
  - (3) FNL Shabbat Service
  - (4) TNT – Shabbat in the Redwoods





## Descriptions of Emeth Services

All evening services begin at 7:15 pm. All Erev Shabbat (evening) dinners begin at 6:30 pm.

**\*Shabbat Short 'N Sweet:** An informal short Erev Shabbat (Friday evening) service. Learn the meaning of the prayers and discuss the Torah portion of the week. Rabbi led, this service is especially appropriate for children of all ages as well as adults. It is part of the Religious School curriculum. Prayers for healing and Mourners Kaddish are included. It is preceded by a community dinner with Shabbat rituals.

**\*Friday Night Live:** This Erev Shabbat (Friday evening) service highlights Kabbalat Shabbat, the introductory prayers. This is a high energy, musical, abbreviated service appropriate for children of all ages as well as adults. It is part of the Religious School curriculum. Prayers for healing and Mourners Kaddish are included. It is preceded by a potluck dinner with Shabbat rituals.

**\*TNT – Torah 'N T'filah:** This Erev Shabbat (Friday evening) service includes reading the weekly Torah portion and a sermon. It is a complete Shabbat service.

**\*Erev Shabbat Services:** Complete Friday evening services, without a Torah service.

**\*Shabbat at Home:** On certain weekends during the year, Congregation Emeth does not have community Shabbat services. Resources are available from the Congregation to facilitate a meaningful Shabbat dinner and Torah discussion in your home.

**\*Shabbat Morning Service:** A traditional Shabbat morning service with Torah and Haftarah readings, and Kiddush lunch to follow. Attire is synagogue traditional (business casual to semi-formal).

# Now Kids 9-11 have their own PJ Library books!



PJ Library is a book-based program available to North American Jewish Children ages 6 months through 8 years-old through the Jewish Federation of Silicon Valley.

Every month, eligible families receive a specific, age-appropriate book in the mail. PJ Our Way is the next chapter of PJ Library for kids ages 9-11.

With PJ Our Way, rather than receiving a specific book in the mail, kids can go to [www.pjourway.org](http://www.pjourway.org) every month to choose the book they want to receive.

Kids can also submit reviews and videos about the books. And they can apply to be part of the national Design Team that has early access to PJ Our Way books and helps create content for the website.



If your young child or grandchild is not yet enrolled in PJ Library, go to the website and sign up! And enroll your 9-11 year olds as well!



## **Save the Date for...**

**The Chanukah Train**

**December 18<sup>th</sup>, 2014**

**Departing at 6:00 pm and 8:00 pm**

### **Share the Light of Chanukah Aboard Roaring Camp Railroad's New Chanukah Train!**

Gather at the Santa Cruz Beach Boardwalk on the 3rd night of Chanukah for the lighting of the menorah and then set off on an incredible train ride in Roaring Camp's comfortable excursion cars adorned with thousands of shining lights and Chanukah decorations.

We'll share in Chanukah traditions and ride the train through the streets of Santa Cruz listening to Chanukah stories, playing dreidel and enjoying kosher refreshments provided by [Chabad by the Sea](#). Evening also includes your choice of mini golf, laser tag or arcade games.

Create a new holiday tradition with family and friends as we experience the lights, stories and traditions of Chanukah in a whole new way!

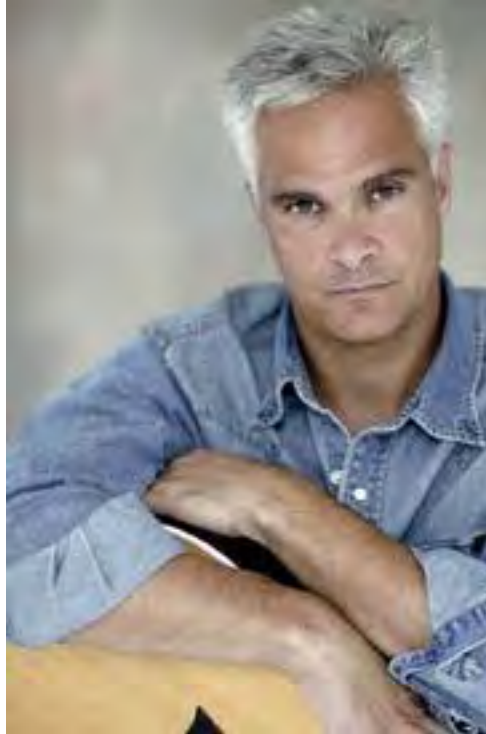
Produced in Association with [Chabad by the Sea](#).

**Click the following link for pictures from previous event:**

[http://www.collive.com/show\\_news.rtx?id=28049](http://www.collive.com/show_news.rtx?id=28049)

***Tickets will be available for purchase on line beginning October 15, 2014.***

**Craig Taubman**  
**Jewish Singer/Songwriter/Producer**  
**Coming to Congregation Emeth!**  
**Friday Night Live, Friday, January 23, 2015**



**This will be a memorable service for the entire family!**

Craig Taubman was one of the creators of the high energy “Friday Night Live” service format, and we use his beautiful melodies such as those for Romenu, L’cha Dodi, Ahavat Olam, and Hashkiveinu at our own services.

We have a variety of Craig’s CD’s in Gift Shop! You may purchase CD’s in exchange for a donation to help defray costs. (Retail price of the CD’s are \$14.95). We want every congregant to be familiar with Craig’s music, so please purchase a CD and listen as a family. Checks for CD’s should be made payable to Congregation Emeth, Rabbi’s Fund.

For more information about Craig, go to <http://craignco.com/v3/wordpress/about-craig/>.



# Join us to travel to Poland and Israel this Spring

## **POLAND TRIP HIGHLIGHTS:**

**April 13 - 20, 2014**

- VIP kosher meals every day
- Deluxe bus including driver and security
- Private guide
- Entrance fees
- Sights include: Warsaw Cemetery, Lauder School, Museum of History of the Polish Jews, Umslagplatz, Mila 18, Rapaport, Lublin, Majdanek, Lublin Yeshiva, Krakow, Schindler's factory, Auschwitz, March of the Living walk and ceremony (VIP seating), Birkenau, Kazimierz Jewish Quarter, Krakow JCC, Galicia Museum, conversations with survivors, righteous among the nations, current Jewish community in Poland. Some meals and services will be held with our local Teen March of the Living.

## **JEWISH FEDERATIONS OF SILICON VALLEY AND EAST BAY ISRAEL TRIP HIGHLIGHTS:**

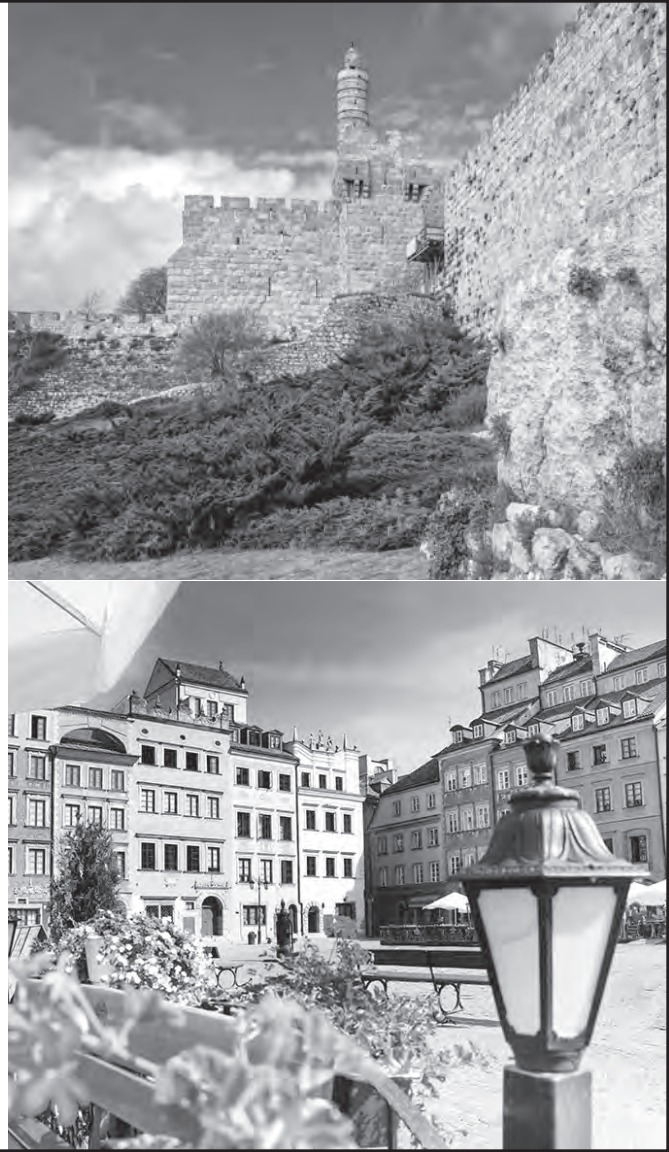
**April 20 - 28, 2014**

- Design your own Israel experience
- Choose from up to five excursions each day
- Tracks include: green and hi-tech, historic Israel, arts and culture, social action and geopolitical, and Jewish learning
- Daily Israeli style breakfasts, welcome, Shabbat and farewell dinners
- All gratuities and museum admissions included
- Experienced tour guides
- Two tiers of pricing for accommodations: 4 and 5 star hotel choices.



**Jewish Federation®**  
OF SILICON VALLEY

**For more information please contact  
Arielle Hendel: 408.357.7501,  
[arielle@jvalley.org](mailto:arielle@jvalley.org)**





# High Holiday Machzor Dedication Opportunity

Congregation Emeth is taking dedications for our new Machzorim (prayer books for the High Holidays.).

This is a wonderful way to honor an accomplishment of a friend or loved one, celebrate a Bar or Bat Mitzvah, or in memory of those we have lost. The donation for each dedication is \$40, which will provide book plates in the High Holiday Machzors.

Please fill out the form below, and mail it with your check made out to  
Congregation Emeth to :

Marby Lee  
Attn: Machzor Dedication  
15850 La Prenda Ct.  
Morgan Hill, CA 95037

Please indicate on the notation line that it is for Machzor Dedication. If you have any further questions, please feel free to contact Marby Lee at 408-779-2824 or [marbles@garlic.com](mailto:marbles@garlic.com).

---

Name \_\_\_\_\_  
Address \_\_\_\_\_  
City/State/Zip \_\_\_\_\_  
Phone \_\_\_\_\_

Please make your check out to  
“Congregation Emeth” and indicate  
that is it for a Machzor Dedication.

Thank you!

☐ In Honor of \_\_\_\_\_  
☐ In Memory of \_\_\_\_\_

## THANK YOU TO OUR DONORS

### SEPTEMBER 2014

Donations to Congregation Emeth are gratefully accepted. Our membership contributions cover only the minimum annual expenses, not the full costs of running a synagogue. Additional gifts are always needed to help keep our activities going.

Donations of money can be by either check or credit card. Donations can also be made in other forms such as property or securities (like appreciated stocks). All are of course tax deductible. Donation information and a form can be found on our website:

[http://www.emeth.net/images/PDFs/forms/donation\\_form.pdf](http://www.emeth.net/images/PDFs/forms/donation_form.pdf)

#### GENERAL FUND

*Contributions to this fund offset everyday operating expenses for religious school, adult education, youth activity, ritual, programming, etc. thus keeping dues and tuition lower.*

Joyce & Jay Maskell, in memory of Alice Friedmann  
Catherine & Joel Levine, in memory of Henry & Sylvia Levine  
Maria & Jonathan Walters, High Holiday donation

#### ALLEN WISOTSKY EDUCATION FUND

*The Scholarship Fund assists the children in our Beit Sefer (religious schools) with need-based tuition scholarships.*

Lindy Wisotsky, in memory of Allen Wisotsky and Dorrie Ward  
Rhoda Keyson, in memory of Irwin Keyson

#### BETTY MEYER CAMBERSHIP FUND

*Reform Jewish summer camps and trips to Israel are valuable means for children to reinforce their Jewish identity. Your contribution will help a student attend who might not otherwise have this opportunity.*

Marilyn & Barry Freund  
In memory of Ruth Gersh & Max Steinway  
In memory of Blanche Siebert  
Patty & Jim Baggese, in memory of Blanche Siebert

#### HIGH HOLIDAY DONATION

*Our High Holiday liturgy reminds us that we have the power and obligation to make a positive difference in the world by performing acts of tzedakah, righteousness. Your contribution to High Holiday donations will help enhance our vibrant congregation in the ongoing work of our Rabbi, our educational programs, and maintenance of our sanctuary.*

Gail & David Markham, High Holiday donation

#### HIGH HOLIDAY MACHZOR

Kathy & Rick Coencas, Machzor donation  
Lauren & John Jenkins, in honor of Joelle & Zac Jenkins

## **RABBI'S DISCRETIONARY FUND**

*This fund enables our Rabbi to make donations to people in need, arrange for programs that she deems worthy, and contribute to other charitable causes she wishes to support. The fund is never used for the Rabbi's personal benefit.*

Marby & Bryson Lee, donation for video equipment

## **ADDITIONAL DONATION OPPORTUNITIES**

**ADULT EDUCATION COMMITTEE** - *Donations to Adult Education support the creation of programs and courses of studies geared for adults. Annual mainstays for this program include adult Hebrew classes, Shabbat in the Redwoods Scholar in Resident, the Adult B'nai Mitzvah program, lectures and films.*

## **AUTOMOBILE DONATION**

**BEIT SEIFER SCHOLARSHIP FUND** - *The Scholarship Fund assists the children in our Beit Sefer, religious schools, with need-based tuition scholarships.*

## **BUILDING FUND**

*We have owned our own building since 2008. Your contribution will support physical improvements to the building and/or will help us pay down our mortgage. We also issue bonds to members and friends of Emeth. For more information about our Emeth bonds, please contact our president, [president@emeth.net](mailto:president@emeth.net).*

**CEMETERY FUND** - *We maintain a Jewish section of a local cemetery. Your donation will go toward upkeep of the cemetery.*

## **COMMUNITY DINNER DONATIONS**

*Part of Emeth's culture is coming together for a Shabbat potluck or community dinner twice a month, prior to Shabbat Short 'N Sweet services. Your contribution enables us to continue this community building.*

## **KARI MUNOWITCH MEMORIAL**

**LIBRARY FUND** - *This fund helps maintain our library and enables us to purchase new books for children and adults.*

## **OUTREACH**

## **PRAYER BOOK**

*This fund purchases new worship materials, including our Shabbat prayerbook, Mishkan T'fila and the new Reform High Holiday Machzor.*

## **RACHAMIM FUND**

*Funds and defrays costs for our loving support of members by providing meals and other services for families in need, including new parents, members who are ill, and members who have sustained a loss of a loved one.*

## **RELIGIOUS SCHOOL**

*Funds programs and equipment for the Religious School, helping to offset expenses not covered by school tuition*

**SISTERHOOD**

*Sisterhood assists with special holiday receptions, develops a booklet to assist families with upcoming bar/bat mitzvah celebrations, offers programs to the women of Congregation Emeth, and provides philanthropic support to a variety of causes. Donations help fund each year's programs.*

**SOCIAL ACTION**

*This committee supports a broad range of activities to help enable congregants to repair the world including serving a monthly meal at the Lord's Table for the homeless.*

**TORAH FUND**

*Congregation Emeth has two Torahs. Funds are occasionally needed for repairs to our sacred scrolls.*

**WINE EVENT DONATION**

**RITUAL FUND** - *Provides funding for cantorial soloists, purchasing supplies to build our Sukkah, and offering special holiday programs, such as our Purim carnival and Chanukah community celebration.*

**YOUTH GROUP (EMET DOR KEF)**

*Emet Dor Kef members annually participate in both a retreat and a field trip to Jewish Los Angeles. The teens work hard to raise funds to cover expenses for these special events, but your additional support will make a difference.*