

5776
2016

August

tammuz
av

KAR-BEN
PUBLISHING

SUNDAY	MONDAY	TUESDAY	WEDNESDAY	THURSDAY	FRIDAY	SATURDAY
	1 26 tammuz	2 27 tammuz	3 28 tammuz	4 29 tammuz	5 1 av 	6 2 av  SHABBAT IN THE REDWOODS <i>Matot-Masei</i>
7 3 av	8 4 av	9 5 av	10 6 av	11 7 av BOARD MEETING	12 8 av  FRIDAY NIGHT LIVE WITH ANGELA	13 9 av  <i>Devarim</i> SHABBAT CHAZON EREV TISHA B'AV
14 10 av TISHA B'AV OBSERVED	15 11 av	16 12 av	17 13 av	18 14 av LORDS TABLE	19 15 av 	20 16 av  TALIA JORDAN BAT MITZVAH <i>Va'etchanan</i> SHABBAT NACHAMU
21 17 av	22 18 av	23 19 av	24 20 av	25 21 av EMETH READS	26 22 av 	27 23 av  ASHTYN ABMONT BAT MITZVAH (AFTERNOON) <i>Ekev</i>
28 24 av TEACHERS & MADRICHIM TRAINING	29 25 av	30 26 av	31 27 av			

5776
2016

September

av
elul

KAR-BEN
PUBLISHING

SUNDAY	MONDAY	TUESDAY	WEDNESDAY	THURSDAY	FRIDAY	SATURDAY
				1 <small>28 av</small>	2 <small>29 av</small> SHABBAT AT HOME	3 <small>30 av</small> <i>Re'eh</i> ROSH CHODESH
4 <small>1 elul</small> ROSH CHODESH	5 <small>2 elul</small> LABOR DAY	6 <small>3 elul</small>	7 <small>4 elul</small>	8 <small>5 elul</small>	9 <small>6 elul</small> CHAI SCHOOL BEGINS MEMBERSHIP SHABBAT WITH ANGELA	10 <small>7 elul</small> ALIYA GLATT BAT MITZVAH <i>Shoftim</i>
11 <small>8 elul</small> EDK WITH RABBI & RACHEL	12 <small>9 elul</small>	13 <small>10 elul</small>	14 <small>11 elul</small>	15 <small>12 elul</small> LORDS TABLE BOARD MEETING	16 <small>13 elul</small> CHAI SCHOOL COMMUNITY DINNER SNS	17 <small>14 elul</small> <i>Ki Tetze</i>
18 <small>15 elul</small>	19 <small>16 elul</small>	20 <small>17 elul</small>	21 <small>18 elul</small>	22 <small>19 elul</small> FALL BEGINS	23 <small>20 elul</small> CHAI SCHOOL FNL	24 <small>21 elul</small> <i>Ki Tavo</i> SELICHOT
25 <small>22 elul</small>	26 <small>23 elul</small>	27 <small>24 elul</small>	28 <small>25 elul</small>	29 <small>26 elul</small>	30 <small>27 elul</small> CHAI SCHOOL COMMUNITY DINNER SNS	



Shabbat Information for the Month of August 2016

Shabbat Matot-Masei

August 6 2 Av

Shabbat in the Redwoods

Saturday, 10:30 AM

See separate flyer

Shabbat Va'Etchanan

August 20 16 Av

Shabbat Morning TNT Service

10:00 AM

Bat Mitzvah of Talia Jordan

Alisa Fineman, Cantorial Soloist

Shabbat Devarim

August 12 9 Av

Friday Night Live

7:15 PM

Angela Gold, Cantorial Soloist

Shabbat Ekev

August 27 23 1av

Shabbat Afternoon Service

3:00 PM

Bat Mitzvah of Ashtyn Abmont

Alisa Fineman, Cantorial Soloist



Descriptions of Emeth Services

All evening services begin at 7:15 pm. All morning services begin at 10:00 am.

***Shabbat Morning Service/TNT Torah 'N T'filah:** This service includes reading the weekly Torah portion and a sermon or teaching from the Rabbi. It is a complete Shabbat service.

***Friday Night Live:** This Erev Shabbat (Friday evening) service highlights the music of Shabbat. It is a full Shabbat service (no Torah service) with a sermon or teaching from the Rabbi.

***Shabbat Short 'N Sweet:** An informal short Erev Shabbat (Friday evening) service. Learn the meaning of the prayers and discuss the Torah portion of the week. Rabbi led, this service is especially appropriate for children of all ages as well as adults. It is part of the Religious School curriculum. Prayers for healing and Mourners Kaddish are included. It is preceded by a community dinner with Shabbat rituals.

***Shabbat at Home:** On certain weekends during the year, Congregation Emeth does not have community Shabbat services. Resources are available from the Congregation to facilitate a meaningful Shabbat dinner and Torah discussion in your home.



Shabbat-in-the-Redwoods

Saturday, August 6th

Mt. Madonna County Park / Redwood Grove

10:30 am–12:00 pm	Shabbat Service
12:00 pm–12:45 pm	Family picnic (Bring your own food & a dessert to share)
12:45 pm– 2:15 pm	Study Session with Willow Katz, Social Justice leader, Temple Beth El in Aptos

With the beauty of Mt. Madonna Park surrounding us,
Rabbi Israel will lead us in a Shabbat service.

Study Session guest speaker Willow Katz will discuss solitary confinement in California and the U.S., views from *Torah* and *Talmud*, and the movement to end solitary confinement of adults and youth. She will focus on the work of the Prisoner Human Rights Movement, Temple Beth El in Aptos, Prisoner Hunger Strike Solidarity Coalition in California, and Together to End Solitary nationwide. Read “California Congregation Works to End Solitary Confinement” on the Religious Action Center of Reform Judaism blog at:

<http://www.rac.org/blog/2016/05/02/california-congregation-works-end-solitary-confinement>

Levi Glatt, who is experienced working with children in forest settings, will be leading the children for a nature walk while the adults have their program. Depending on the number of children, more teens may be asked to lead so please RSVP to Rabbi Israel by August 1 if your children will be participating. Thank you.



\$HABBAT IN THE REDWOOD\$

PARK INFORMATION

**Mt. Madonna County Park
7850 Pole Line Rd
Watsonville, CA 95076
(408) 842-2341**

This year we invite all congregants and their families to spend Shabbat with us on Friday night, August 5th as well as joining us for our Saturday program on August 6th. After a brief Shabbat service at 6:00 pm, we will share a potluck dinner in the woods. Camping overnight is encouraged, but not necessary to join us for Shabbat. The brief Shabbat service and meal will be held at Valley View #1 Campsite 120N. For more information about the program, Friday's brief Shabbat service, or camping, contact Wendy Thowdis (wtinsa@yahoo.com)

To book a campsite go to: www.gooutsideandplay.org

Families interested in booking sites near each other, please contact MariaElena Jarson (jarsonfamily@gmail.com)

See the following website for a map of the park.

<http://www.sccgov.org/sites/parks/parkfinder/Documents/MtMadonnaGuideMap.pdf>



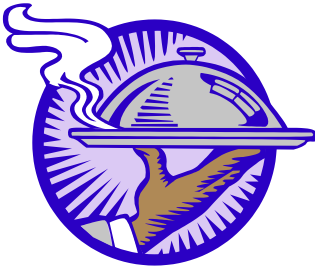
Congregation Emeth is committed to helping feed the needy
on the third Thursday of each month

from 4:00-7:00 p.m.

Lord's Table

St. Mary Catholic Parish

11 First Street, Gilroy



Our next date is: **August 18**

Children accompanied by parents are welcome!

For more information, contact Sandra Jackson

at oursash@yahoo.com



Invites you to attend

Shabbat Morning Services

Saturday, August 20

Parshat Va'Etchanan

**The entire congregation
is invited as
Talía Jordan
is called to the Torah as
Bat Mitzvah**

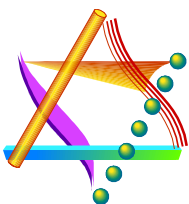


Services begin promptly at 10:00 a.m.

Followed by a Congregational Light Kiddush Lunch

Alisa Fineman, Cantor

RSVP for lunch to taliasbatmitzvah2016@gmail.com



Services to be held at:

**Congregation Emeth
17835 Monterey Street
Morgan Hill**





Please join us for the next

"Great Reads With a Jewish Theme"

THURSDay, AUGUST 25

7:00 PM

Note the change of days we will be meeting in the Fall to Thursdays.
Our second date to meet will be Thursday, November 17th.



The book to be discussed is

Why Be Jewish? A Testament **by Edgar M. Bronfman (2016)**

It's a personal (and final) reflection about his faith, presented as 12 tenets he identifies as important for his belief system. He presents an appreciation of what makes Judaism a worldview worth embracing, and charges the next generation to make Judaism their own. A quote in one review stated, "For Bronfman, questioning the status quo of the organized Jewish community has fostered innovations in building Jewish literacy and deepening a connection to Jewish life." He connects his insights to scripture to discuss such topics as "dedication to social action".

All are welcome to join in this discussion,
even if you have read none or only part of the book!

If you are purchasing the book, remember to do it through [Amazon Smile](#) so that Emeth will receive a portion of the proceeds!

RSVP to Wendy Thowdis via email wtinsa@yahoo.com



Invites you to attend

Shabbat Afternoon Services

Saturday, August 27

Parshat Ekev

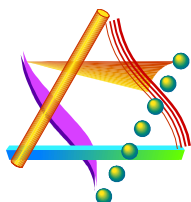


**The entire congregation
is invited as
Ashtyn Abmont
is called to the Torah as
Bat Mitzvah**



Services begin promptly at 3:00 p.m.

Alisa Fineman, Cantor
RSVP to orthospirt@aol.com



Services to be held at:
Congregation Emeth
17835 Monterey Street
Morgan Hill





Congregation Emeth's Annual

Progressive Dinner

Saturday, September 17

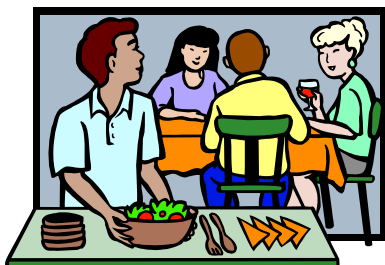
The evening will begin at the home of one of our member families
and "progress" to other members' homes
where we will be enjoying different courses and culinary delights!

Upon reserving your space, you will be assigned to one of the hosts and asked
to contribute to that particular course.

If you are willing and able to host one of the courses at your home, please volunteer!
You will be assigned a team of contributors to help, so no extra cooking is required!

We will also have Emet Dor Kef teens available for babysitting at the temple so our
young parents can participate in the Progressive Dinner!

**This is always a very popular adult-oriented event,
and space is limited, so make your reservation today!
(Adult members only)**



RSVP to Patty Baggese or for more information:

pbaggese@garlic.com or 408-842-6876

THANK YOU TO OUR DONORS

JUNE 2016

(donations received after June 30 will be acknowledged in the September flyers)

Donations to Congregation Emeth are gratefully accepted. Our membership contributions cover only the minimum annual expenses, not the full costs of running a synagogue. Additional gifts are always needed to help keep our activities going.

Donations of money can be by either check or credit card. Donations can also be made in other forms such as property or securities (like appreciated stocks). All are of course tax deductible. Donation information and a form can be found on our website:

http://www.emeth.net/images/PDFs/forms/donation_form.pdf

ALLEN WISOTSKY EDUCATION FUND

The Scholarship Fund assists the children in our Beit Sefer (religious schools) with need-based tuition scholarships.

Marilyn & Barry Freund, in honor of Rabbi Israel and Jerry Dubin's 50th anniversary

BETTY MEYER CAMBERSHIP FUND

Reform Jewish summer camps and trips to Israel are valuable means for children to reinforce their Jewish identity. Your contribution will help a student attend who might not otherwise have this opportunity.

In honor of Rabbi Israel & Jerry Dubin's 50th anniversary

Barbara & Howard Derman

Charlotte & Sam Axelrad

Leslie & Sanford Weiner

Margaret Wische

Marty & Melvin Buck

Miriam & Dr. Benjamin Portnoy

Stephanie & Marvin Beasley

Mitzi Shure & Jerry Wische

Aileen Teren-Foster & Dale Foster, for Jim Baggese's speedy recovery

Marilyn & Barry Freund

in honor of Grant Gordon's Tree of Life Award

in honor of Mel Weisblatt's Tree of Life Award

for Amy Simon and Mak Nieter's healing

Mitzi Shure & Jerry Wische, in honor of Aliya Glatt's bat mitzvah

Patty & Jim Baggese

in memory of Arthur Meyer

in honor of Mel Weisblatt's Tree of Life Award and 75th birthday

in honor of Grant Gordon's Tree of Life Award

CAPITAL CAMPAIGN

Kathy & Rick Coencas, capital campaign donation

Hana & Yigal Cidon, capital campaign donation

GENERAL FUND

Contributions to this fund offset everyday operating expenses for religious school, adult education, youth activity, ritual, programming, etc. thus keeping dues and tuition lower.

Esther & Jay Weinstein, in honor of Rabbi Israel & Jerry Dubin's 50th anniversary

Susan Meyers & Michael Oshan
in honor of Grant Gordon's Tree of Life Award
in honor of Mel Weisblatt's Tree of Life Award
in honor of Rabbi Israel & Jerry Dubin's 50th anniversary

RABBI'S DISCRETIONARY FUND

This fund enables our Rabbi to make donations to people in need, arrange for programs that she deems worthy, and contribute to other charitable causes she wishes to support. The fund is never used for the Rabbi's personal benefit.

Aileen Teren-Foster & Dale Foster, in honor of Rabbi Israel & Jerry Dubin's 50th anniversary
Cathy & Robert Silverstein, in honor of Rabbi Israel & Jerry Dubin's 50th anniversary
Hana & Yigal Cidon, in memory of Helena Zobel

RELIGIOUS SCHOOL

Funds programs and equipment for the Religious School, helping to offset expenses not covered by school tuition

Aileen Teren-Foster & Dale Foster, in honor of this year's bar/bat mitzvahs

SISTERHOOD

Sisterhood assists with special holiday receptions, develops a booklet to assist families with upcoming bar/bat mitzvah celebrations, offers programs to the women of Congregation Emeth, and provides philanthropic support to a variety of causes. Donations help fund each year's programs.

Steve Miller, Sisterhood donation

YOUTH GROUP (EMET DOR KEF)

Emet Dor Kef members annually participate in both a retreat and a field trip to Jewish Los Angeles. The teens work hard to raise funds to cover expenses for these special events, but your additional support will make a difference.

Denise Weyl, in honor of May 14, 2016 Torah aliya

ADDITIONAL DONATION OPPORTUNITIES

ADULT EDUCATION COMMITTEE - *Donations to Adult Education support the creation of programs and courses of studies geared for adults. Annual mainstays for this program include adult Hebrew classes, Shabbat in the Redwoods Scholar in Resident, the Adult B'nai Mitzvah program, lectures and films.*

AUTOMOBILE DONATION

BEIT SEIFER SCHOLARSHIP FUND - *The Scholarship Fund assists the children in our Beit Sefer, religious schools, with need-based tuition scholarships.*

BIMAH FUND

B'NEI MITZVAH KIDDUSH FUND

BUILDING FUND

We have owned our own building since 2008. Your contribution will support physical improvements to the building and/or will help us pay down our mortgage. We also issue bonds to members and friends of Emeth. For more information about our Emeth bonds, please contact our president, president@emeth.net.

CEMETERY FUND - *We maintain a Jewish section of a local cemetery. Your donation will go toward upkeep of the cemetery.*

COMMUNITY DINNER DONATIONS

Part of Emeth's culture is coming together for a Shabbat potluck or community dinner twice a month, prior to Shabbat Short 'N Sweet services. Your contribution enables us to continue this community building.

HIGH HOLIDAY DONATION

Our High Holiday liturgy reminds us that we have the power and obligation to make a positive difference in the world by performing acts of tzedakah, righteousness. Your contribution to High Holiday donations will help enhance our vibrant congregation in the ongoing work of our Rabbi, our educational programs, and maintenance of our sanctuary.

HIGH HOLIDAY MACHZOR

KARI MUNOWITCH MEMORIAL

LIBRARY FUND - *This fund helps maintain our library and enables us to purchase new books for children and adults.*

LORD'S TABLE

OUTREACH

PLAYGROUND

PRAYER BOOK

This fund purchases new worship materials, including our Shabbat prayerbook, Mishkan T'fila and the new Reform High Holiday Machzor.

RITUAL FUND - *Provides funding for cantorial soloists, purchasing supplies to build our Sukkah, and offering special holiday programs, such as our Purim carnival and Chanukah community celebration.*

RACHAMIM FUND

Funds and defrays costs for our loving support of members by providing meals and other services for families in need, including new parents, members who are ill, and members who have sustained a loss of a loved one.

SOCIAL ACTION

This committee supports a broad range of activities to help enable congregants to repair the world including serving a monthly meal at the Lord's Table for the homeless.

SPECIAL EVENTS

TORAH FUND

Congregation Emeth has two Torahs. Funds are occasionally needed for repairs to our sacred scrolls.

WINE EVENT DONATION