

5774  
2014

# August

av  
elul

**KAR-BEN**  
PUBLISHING

SUNDAY	MONDAY	TUESDAY	WEDNESDAY	THURSDAY	FRIDAY	SATURDAY
					1 <sup>5 av</sup> 	2 <sup>6 av</sup>   <i>Devarim</i> <b>SHABBAT CHAZON</b>
3 <sup>7 av</sup>	4 <sup>8 av</sup>  <b>EREV TISHA B'AV</b>	5 <sup>9 av</sup>  <b>TISHA B'AV</b>	6 <sup>10 av</sup>	7 <sup>11 av</sup>	8 <sup>12 av</sup> 	9 <sup>13 av</sup>   SHABBAT TNT MORNING SERVICE JONATHAN MARX CANTORIAL SOLOIST <i>Va'etchanan</i> <b>SHABBAT NACHAMU</b>
10 <sup>14 av</sup>  MEMBERSHIP MAILING PARTY 2:00 PM	11 <sup>15 av</sup>	12 <sup>16 av</sup>	13 <sup>17 av</sup>	14 <sup>18 av</sup>  BOARD MEETING (NOTE NEW BOARD MEETING DAY)	15 <sup>19 av</sup> 	16 <sup>20 av</sup>   SISTERHOOD PROGRESSIVE DINNER WITH HAVDALLAH - EMETH MEMBERS ONLY  <i>Ekev</i>
17 <sup>21 av</sup>  TEACHER & MADRICHIM IN-SERVICE 2-4:30 PM	18 <sup>22 av</sup>	19 <sup>23 av</sup>	20 <sup>24 av</sup>	21 <sup>25 av</sup>  LORD'S TABLE	22 <sup>26 av</sup>   FNL SHABBAT SERVICES MARK LEVY CANTORIAL SOLOIST  CONFIRMATION RETREAT WEEKEND	23 <sup>27 av</sup>   FAMILY SOCIAL: PIZZA/MOVIE  <i>Re'eh</i>
24 <sup>28 av</sup>  CONFIRMATION RETREAT EDK AFTERNOON SOCIAL	25 <sup>29 av</sup>	26 <sup>30 av</sup>	27 <sup>1 elul</sup>	28 <sup>2 elul</sup>	29 <sup>3 elul</sup>   FNL SHABBAT SERVICES JONATHAN MARX CANTORIAL SOLOIST	30 <sup>4 elul</sup>   <i>Shoftim</i>
31 <sup>5 elul</sup>		<b>ROSH CHODESH</b>	<b>ROSH CHODESH</b>			

5774-5775  
2014

# September

elul  
tishri

**KAR-BEN**  
PUBLISHING

SUNDAY	MONDAY	TUESDAY	WEDNESDAY	THURSDAY	FRIDAY	SATURDAY
	1 6 elul  LABOR DAY	2 7 elul	3 8 elul EMET DOR KEF	4 9 elul	5 10 elul Prospective Member Shabbat Dinner and FNL Service Guest Cantor: Saul Kaye	6 11 elul  <i>Ki Tetze</i>
7 12 elul	8 13 elul	9 14 elul HEBREW SCHOOL STARTS	10 15 elul	11 16 elul BOARD MEETING	12 17 elul Opening Day Chai School  PARENTS MEETING, 5:00 PM	13 18 elul Haley Toch Bat Mitzvah  <i>Ki Tavo</i>
14 19 elul EMETH WINETASTING	15 20 elul	16 21 elul HEBREW SCHOOL	17 22 elul EMET DOR KEF	18 23 elul	19 24 elul CHAI SCHOOL Community Dinner SNS	20 25 elul  <i>Nitzavim/Vayelech SELICHOT</i>
21 26 elul START SUKKAH BLDG FAMILY APPLE PICKING	22 27 elul	23 28 elul NO HEBREW SCHOOL  FALL BEGINS	24 29 elul Sisterhood Hosts Oneg  EREV ROSH HASHANAH	25 1 tishri  ROSH HASHANAH	26 2 tishri NO CHAI SCHOOL  ROSH HASHANAH	27 3 tishri  <i>Ha'azinu SHABBAT SHUVAH</i>
28 4 tishri  FAST OF GEDALIAH OBSERVED	29 5 tishri	30 6 tishri HEBREW SCHOOL				



# Shabbat Information for the Month of August, 2014

## Shabbat Devarim

August 1-2 6 Av

Devarim (Deuteronomy) 1:3-3:22  
Friday evening candle lighting: 7:56  
Saturday night Havdallah: 8:57

**Shabbat at Home**

## Shabbat Va'etchanan

August 8-9 13 Av

Devarim (Deuteronomy) 3:23-7:11  
Friday evening candle lighting: 7:49  
Saturday night Havdallah: 8:48

**TNT Shabbat Morning Service**  
- 10:00 AM

**Jonathan Marx, Cantorial Soloist**

## Shabbat Ekev

August 15-16 20 Av

Devarim (Deuteronomy) 7:12-11:25  
Friday evening candle lighting: 7:41  
Saturday night Havdallah: 8:39

**Shabbat at Home**

## Shabbat Re'eh

August 22-23 27 Av

Devarim (Deuteronomy) 11:26-16:17  
Friday evening candle lighting: 7:32  
Saturday night Havdallah: 8:29

**Friday Night Live Service - 7:15 PM**  
**Mark Levy, Cantorial Soloist**

## Shabbat Shoftim

August 29-30 4 Elul

Devarim (Deuteronomy) 16:18-21:9  
Friday evening candle lighting: 7:23  
Saturday night Havdallah: 8:19

**Friday Night Live Service - 7:15 PM**  
**Jonathan Marx, Cantorial Soloist**



## Descriptions of Emeth Services

All evening services begin at 7:15 pm. All morning services begin at 10:00 am.

**\*Erev Shabbat Services:** Complete Friday evening services, without a Torah service.

**\*Shabbat Morning Service:** This service includes reading the weekly Torah portion and a sermon or teaching from the Rabbi. It is a complete Shabbat service.

**\*Shabbat at Home:** On certain weekends during the year, Congregation Emeth does not have community Shabbat services. Resources are available from the Congregation to facilitate a meaningful Shabbat dinner and Torah discussion in your home.

**\*Friday Night Live:** This Erev Shabbat (Friday evening) service highlights the music of Shabbat. It is a full Shabbat service (no Torah service) with a sermon or teaching from the Rabbi.

# Membership Postcard Mailing Party-- Volunteers Needed!



In an effort to get the word out that there is a Jewish synagogue in Morgan Hill, we will be sending postcards with information about Congregation Emeth to all homes that have closed escrow this year within specified zip codes.

We will be addressing postcards on

**Sunday August 10**

**at 2:00 pm.**

We could sure use help as there are over 1500 cards being sent!

"Many hands make light work..."



Congregation Emeth's Annual

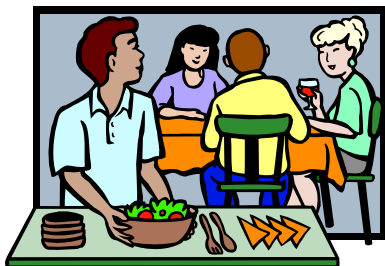
# Progressive Dinner

## Saturday, August 16

The evening will begin at the home of one of our member families  
and “progress” to other members’ homes  
where we will be enjoying different courses and culinary delights!

Upon reserving your space, you will be assigned to one of the hosts and asked  
to contribute to that particular course.

**This is always a very popular adult-oriented event,  
and space is limited,  
so make your reservation today! (Adult members only)**



RSVP to Patty Baggesse

[pbaggese@garlic.com](mailto:pbaggese@garlic.com) or 408-842-6876



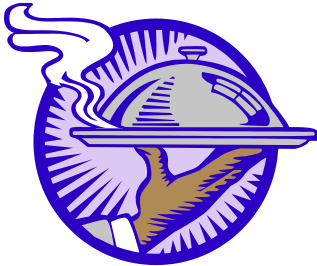
Congregation Emeth is committed to helping feed the needy  
on the third Thursday of each month

from 4:00-7:00 p.m.

Lord's Table

St. Mary Catholic Parish

11 First Street, Gilroy



Our next date is: **August 21**

Children accompanied by parents are welcome!

For more information, contact Sandra Jackson

at [oursash@yahoo.com](mailto:oursash@yahoo.com)

# Congregation Emeth Invites you to a **FAMILY MOVIE** **NIGHT**



**Movie:** Fiddler on the Roof

**A Sing-Along Party!**

**Date:** Saturday, August 23, 2014

**Arrive at Emeth:** 5:45 pm

**Movie start Time:** 6:00 pm

**Place:** Congregation Emeth

**Cost:** free

**Provided:** PIZZA, POPCORN AND DESSERT

**RSVP:**

**Robin Yacono**



[rtyacono@comcast.net](mailto:rtyacono@comcast.net) OR Home: 408-281-4025

Pizza & popcorn will be available from 5:45pm.  
An intermission is planned and dessert will be served.  
Bring the whole family – this movie is for all ages!





Join us for an afternoon of wine tasting at enchanting  
Castillo Hillside Shire Winery  
2215 Liberata Drive, Morgan Hill

Sunday, September 14  
from 3 - 6 p.m.  
Tickets: \$35

Your ticket includes a bottle of wine, appetizers, and wine tasting. Guests will also receive discounted member pricing on additional wine purchases and can bid on fun and unique prizes in our silent auction and raffles.

For more information and to purchase tickets, visit  
[www.emeth.net/winetasting](http://www.emeth.net/winetasting) or email [events@emeth.net](mailto:events@emeth.net).





# SHABBAT HOSTS NEEDED

## For the coming year!

July 11 <sup>(1)</sup> - Freund  
July 18 <sup>(1)</sup> - Weyl  
August 9 <sup>(2)</sup> - Baggese  
August 22 <sup>(3)</sup> - Jarson  
August 29 <sup>(3)</sup> -  
Coencas  
September 5 <sup>(3)</sup>  
October 10 <sup>(3)</sup> Sukkot  
October 17 <sup>(3)</sup> Simchat  
Torah  
November 1 <sup>(2)</sup>

November 7 <sup>(3)</sup>  
November 29 <sup>(2)</sup>  
December 13 <sup>(2)</sup>  
December 19 <sup>(3)</sup> Chanukah  
December 26 <sup>(3)</sup>  
January 2 <sup>(3)</sup>  
January 16 <sup>(3)</sup>  
January 31 <sup>(2)</sup>  
February 13 <sup>(3)</sup>  
February 20 <sup>(3)</sup>  
March 6 <sup>(3)</sup> Purim

March 21 <sup>(2)</sup>  
April 11 <sup>(2)</sup>  
April 24 <sup>(3)</sup>  
May 9 <sup>(4)</sup>  
May 22 <sup>(3)</sup>  
June 5 <sup>(3)</sup>  
June 12 <sup>(1)</sup>  
June 19 <sup>(3)</sup>

Please select at least one Shabbat service  
when your family will be the designated hosts.

The Shabbat hosts provide challah and flowers and time before and after the service for setup and cleanup. Why not select a special occasion (for example, anniversary and/or birthday) to host and celebrate with your Emeth family?

Send your preference of date(s) to Debbie Zajac  
[admin@emeth.net](mailto:admin@emeth.net) or (408) 778-8200



- Notes:
- (1) Erev Shabbat Service
  - (2) TNT (Torah 'N Tefilah) Morning Service
  - (3) FNL Shabbat Service
  - (4) TNT – Shabbat in the Redwoods





## Descriptions of Emeth Services

All evening services begin at 7:15 pm. All Erev Shabbat (evening) dinners begin at 6:15 pm.

**\*Shabbat Short 'N Sweet:** An informal short Erev Shabbat (Friday evening) service. Learn the meaning of the prayers and discuss the Torah portion of the week. Rabbi led, this service is especially appropriate for children of all ages as well as adults. It is part of the Religious School curriculum. Prayers for healing and Mourners Kaddish are included. It is preceded by a community dinner with Shabbat rituals.

**\*Friday Night Live:** This Erev Shabbat (Friday evening) service highlights Kabbalat Shabbat, the introductory prayers. This is a high energy, musical, abbreviated service appropriate for children of all ages as well as adults. It is part of the Religious School curriculum. Prayers for healing and Mourners Kaddish are included. It is preceded by a potluck dinner with Shabbat rituals.

**\*TNT – Torah 'N T'filah:** This Erev Shabbat (Friday evening) service includes reading the weekly Torah portion and a sermon. It is a complete Shabbat service.

**\*Erev Shabbat Services:** Complete Friday evening services, without a Torah service.

**\*Shabbat at Home:** On certain weekends during the year, Congregation Emeth does not have community Shabbat services. Resources are available from the Congregation to facilitate a meaningful Shabbat dinner and Torah discussion in your home.

**\*Shabbat Morning Service:** A traditional Shabbat morning service with Torah and Haftarah readings, and Kiddush lunch to follow. Attire is synagogue traditional (business casual to semi-formal).

## THANK YOU TO OUR DONORS

JUNE 2014

Donations to Congregation Emeth are gratefully accepted. Our membership contributions cover only the minimum annual expenses, not the full costs of running a synagogue. Additional gifts are always needed to help keep our activities going.

Donations of money can be by either check or credit card. Donations can also be made in other forms such as property or securities (like appreciated stocks). All are of course tax deductible. Donation information and a form can be found on our website:

[http://www.emeth.net/images/PDFs/forms/donation\\_form.pdf](http://www.emeth.net/images/PDFs/forms/donation_form.pdf)

### GENERAL FUND

*Contributions to this fund offset everyday operating expenses for religious school, adult education, youth activity, ritual, programming, etc. thus keeping dues and tuition lower.*

Cathy & Pi Silverstein, in honor of the Adult B'not Mitzvah

Debbie Zajac, in honor of the Adult B'not Mitzvah

Kathy & Rick Coencas

In honor of the Adult B'not Mitzvah

In memory of Luba Drezovsky, Charles Coencas and Dorothy Coencas

Rick Hopkins & Lisa Sinizer, in memory of Anna Hopkins

Susan Meyers, in honor of the other four b'not mitzvah

### ALLEN WISOTSKY EDUCATION FUND

*The Scholarship Fund assists the children in our Beit Sefer (religious schools) with need-based tuition scholarships.*

Barbara & Jeff Persin, in honor of Aileen Teren-Foster's bat mitzvah

Deborah Zimmer, in honor of Aileen Teren-Foster's bat mitzvah

Paula Marsh & Harold Welsh, in honor of the Adult B'not Mitzvah

Sandra & Geoff Jackson, in honor of the Adult B'not Mitzvah

### BUILDING FUND

*We have owned our own building since 2008. Your contribution will support physical improvements to the building and/or will help us pay down our mortgage. We also issue bonds to members and friends of Emeth. For more information about our Emeth bonds, please contact our president,*

**[president@emeth.net](mailto:president@emeth.net)**

Joyce & Jay Maskell, in memory of John Friedmann

### BETTY MEYER CAMBERSHIP FUND

*Reform Jewish summer camps and trips to Israel are valuable means for children to reinforce their Jewish identity. Your contribution will help a student attend who might not otherwise have this opportunity.*

Kathy & Rick Coencas, in honor of Levi Glatt's bar mitzvah

Marilyn & Barry Freund

In honor of the Adult B'not Mitzvah

In honor of the Emeth high school graduates

Patty & Jim Baggese

In memory of Arthur Meyer

In memory of Dorrie Ward

## **PRAYER BOOK**

*This fund purchases new worship materials, including our Shabbat prayerbook, Mishkan T'fila and the new Reform High Holiday Machzor.*

Rena & Harlan Glatt

In honor of the Adult B'not Mitzvah

In honor of Levi Glatt's bar mitzvah

## **OUTREACH**

Brigit & Perry Strongin, outreach donation

## **RABBI'S DISCRETIONARY FUND**

*This fund enables our Rabbi to make donations to people in need, arrange for programs that she deems worthy, and contribute to other charitable causes she wishes to support. The fund is never used for the Rabbi's personal benefit.*

Denise Weyl, in honor of the Adult B'not Mitzvah

Hana & Yigal Cidon, Rabbi's discretionary fund donation

Jodi & John Belsher, for Congregation Emeth's kindness

MariaElena & Aaron Jarson, in honor of Rabbi Israel

Nona & Jack Sheff, Rabbi's discretionary fund donation

Paula Marsh & Harold Welsh

In honor of Rabbi Israel

In honor of Angela Gold

Sandra & Geoff Jackson

In honor of Arthur Burns

In honor of teaching b'not mitzvah

## **SISTERHOOD**

*Sisterhood assists with special holiday receptions, develops a booklet to assist families with upcoming bar/bat mitzvah celebrations, offers programs to the women of Congregation Emeth, and provides philanthropic support to a variety of causes. Donations help fund each year's programs.*

Brigit & Perry Strongin, in honor of the Adult B'not Mitzvah

## **YOUTH GROUP (EMET DOR KEF)**

*Emet Dor Kef members annually participate in both a retreat and a field trip to Jewish Los Angeles. The teens work hard to raise funds to cover expenses for these special events, but your additional support will make a difference.*

Nona & Jack Sheff, Youth Group donation

## **SPECIAL GIFTS TO SUPPORT PROGRAMS OF CONGREGATION EMETH**

**ADULT EDUCATION COMMITTEE** - *Donations to Adult Education support the creation of programs and courses of studies geared for adults. Annual mainstays for this program include adult Hebrew classes, Shabbat in the Redwoods Scholar in Resident, the Adult B'nai Mitzvah program, lectures and films.*

Hanna & Howard Jarson, in honor of MariaElena Jarson

## **ADDITIONAL DONATION OPPORTUNITIES**

### **RACHAMIM FUND**

*Funds and defrays costs for our loving support of members by providing meals and other services for families in need, including new parents, members who are ill, and members who have sustained a loss of a loved one.*

### **RELIGIOUS SCHOOL**

*Funds programs and equipment for the Religious School, helping to offset expenses not covered by school tuition*

### **TORAH FUND**

*Congregation Emeth has two Torahs. Funds are occasionally needed for repairs to our sacred scrolls.*

### **SOCIAL ACTION**

*This committee supports a broad range of activities to help enable congregants to repair the world including serving a monthly meal at the Lord's Table for the homeless.*

### **WINE EVENT DONATION**

### **AUTOMOBILE DONATION**

### **HIGH HOLIDAY DONATION**

*Our High Holiday liturgy reminds us that we have the power and obligation to make a positive different in the world by performing acts of tzedakah, righteousness. Your contribution to High Holiday donations will help enhance our vibrant congregation in the ongoing work of our Rabbi, our educational programs, and maintenance of our sanctuary.*

### **KARI MUNOWITCH MEMORIAL**

### **COMMUNITY DINNER DONATIONS**

*Part of Emeth's culture is coming together for a Shabbat potluck or community dinner twice a month, prior to Shabbat Short 'N Sweet services. Your contribution enables us to continue this community building.*

**LIBRARY FUND** - *This fund helps maintain our library and enables us to purchase new books for children and adults.*

**BEIT SEIFER SCHOLARSHIP FUND** - *The Scholarship Fund assists the children in our Beit Sefer, religious schools, with need-based tuition scholarships.*

**RITUAL FUND** - *Provides funding for cantorial soloists, purchasing supplies to build our Sukkah, and offering special holiday programs, such as our Purim carnival and Chanukah community celebration.*

**CEMETERY FUND** - *We maintain a Jewish section of a local cemetery. Your donation will go toward upkeep of the cemetery.*