

5776
2015

November

cheshvan
kislev

KAR-BEN
PUBLISHING

SUNDAY	MONDAY	TUESDAY	WEDNESDAY	THURSDAY	FRIDAY	SATURDAY
1 19 cheshvan TEACHER IN SERVICE EDK CLASS (Church Rental 10-11 AM 6-7 PM)	2 20 cheshvan	3 21 cheshvan HS URJ BIENNIAL ORLANDO ELECTION DAY	4 22 cheshvan	5 23 cheshvan MUSSAR (Church Rental 6-7:30 PM)	6 24 cheshvan  NO CHAI SCHOOL SHABBAT AT HOME	7 25 cheshvan  <i>Chaye Sarah</i>
8 26 cheshvan (Church Rental 10-11 AM 6-7 PM)	9 27 cheshvan	10 28 cheshvan HS EDK FUNDRAISER - MOD PIZZA	11 29 cheshvan BOARD MEETING VETERANS DAY CANADIAN REMEMBRANCE DAY	12 30 cheshvan MUSSAR ROSH CHODESH	13 1 kislev  CHAI SCHOOL GIFT SHOP OPEN COMMUNITY DINNER SNS ROSH CHODESH	14 2 kislev  <i>Toldot</i>
15 3 kislev (Church Rental 10-11 AM 6-7 PM)	16 4 kislev	17 5 kislev HS	18 6 kislev	19 7 kislev MUSSAR LORDS TABLE (Church Rental 6-7:30 PM)	20 8 kislev  CHAI SCHOOL	21 9 kislev  TNT <i>Vayetze</i>
22 10 kislev (Church Rental 10-11 AM 6-7 PM)	23 11 kislev	24 12 kislev NO HS	25 13 kislev INTERFAITH THANKSGIVING SERVICE	26 14 kislev NO MUSSAR THANKSGIVING DAY	27 15 kislev  NO CHAI SCHOOL SHABBAT AT HOME	28 16 kislev  <i>Vayishlach</i>
29 17 kislev (Church Rental 10-11 AM 6-7 PM)	30 18 kislev					

5776
2015

December

kislev
tevet

KAR-BEN
PUBLISHING

SUNDAY	MONDAY	TUESDAY	WEDNESDAY	THURSDAY	FRIDAY	SATURDAY
		1 19 kislev HS	2 20 kislev	3 21 kislev MUSSAR (Church Rental 6-7:30 PM)	4 22 kislev CHAI SCHOOL SHABBAT AT HOME	5 23 kislev <i>Vayeshev</i>
6 24 kislev COMMUNITY CHANUKAH AT BOOKSMART 1:30-3PM (Church Rental 10-11 AM) EREV HANUKKAH	7 25 kislev HANUKKAH	8 26 kislev HS HANUKKAH	9 27 kislev BOARD MEETING HANUKKAH	10 28 kislev MUSSAR HANUKKAH	11 29 kislev CHAI SCHOOL CHANUKAH POTLUCK SNS, CHANUKAH HANUKKAH	12 30 kislev <i>Miketz</i> ROSH CHODESH HANUKKAH
13 1 tevet EDK CHANUKAH PARTY (Church Rental 10-11 AM) ROSH CHODESH HANUKKAH	14 2 tevet SISTERHOOD CHANUKAH PARTY & FUNDRAISER HANUKKAH	15 3 tevet HS	16 4 tevet	17 5 tevet MUSSAR LORDS TABLE (Church Rental 6-7:30 PM)	18 6 tevet NO CHAI SCHOOL	19 7 tevet TNT <i>Vayigash</i>
20 8 tevet (Church Rental 10-11 AM 6-7 PM)	21 9 tevet	22 10 tevet NO HS FAST DAY WINTER BEGINS	23 11 tevet	24 12 tevet NO MUSSAR	25 13 tevet LORDS TABLE CHINESE DINNER AROUND THE EMETH SHABBAT TABLE; MOVIE NIGHT EMETH CHRISTMAS DAY	26 14 tevet <i>Veyechi</i>
27 15 tevet (Church Rental 10-11 AM 6-7 PM)	28 16 tevet	29 17 tevet NO HS	30 18 tevet	31 19 tevet NO MUSSAR		



Shabbat Information for the Month of November, 2015

Shabbat Chaye Sarah

November 6-7 25 Cheshvan

Bereishit (Genesis) 23:1-25:18
Friday evening candle lighting: 4:46
Saturday night Havdallah: 5:43

Shabbat at Home

Shabbat Toldot

November 13-14 2 Kislev

Bereishit (Genesis) 25:19-28:9
Friday evening candle lighting: 4:40
Saturday night Havdallah: 5:38

Community Shabbat Dinner 6:30 PM

Shabbat Short 'N Sweet 7:15 PM

Shabbat Vayetze

November 20-21 9 Kislev

Bereishit (Genesis) 28:10-32:3
Friday evening candle lighting: 4:36
Saturday night Havdallah: 5:35

Shabbat Morning TNT Service

10:00 AM

Angela Gold, Cantorial Soloist

Shabbat Vayishlach

November 27-28 16 Kislev

Bereishit (Genesis) 32:4-36:43
Friday evening candle lighting: 4:33
Saturday night Havdallah: 5:32

Shabbat at Home



Descriptions of Emeth Services

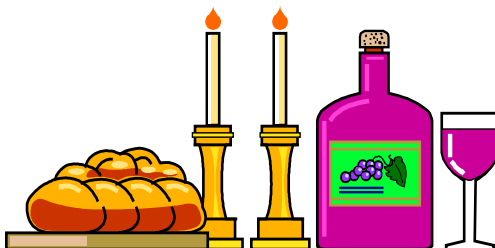
All evening services begin at 7:15 pm. All morning services begin at 10:00 am.

***Shabbat Morning Service/TNT Torah 'N T'filah:** This service includes reading the weekly Torah portion and a sermon or teaching from the Rabbi. It is a complete Shabbat service.

***Friday Night Live:** This Erev Shabbat (Friday evening) service highlights the music of Shabbat. It is a full Shabbat service (no Torah service) with a sermon or teaching from the Rabbi.

***Shabbat Short 'N Sweet:** An informal short Erev Shabbat (Friday evening) service. Learn the meaning of the prayers and discuss the Torah portion of the week. Rabbi led, this service is especially appropriate for children of all ages as well as adults. It is part of the Religious School curriculum. Prayers for healing and Mourners Kaddish are included. It is preceded by a community dinner with Shabbat rituals.

***Shabbat at Home:** On certain weekends during the year, Congregation Emeth does not have community Shabbat services. Resources are available from the Congregation to facilitate a meaningful Shabbat dinner and Torah discussion in your home.





November Children & Youth Education Programs

Tuesday Programs

November 3, 10, 17

Hebrew School

4:30 -6:00 PM Classroom time

November 10 – EDK Fundraiser at MOD Pizza!
(See separate flyer)

Friday Programs

November 13, 20

Chai School

4:30-6:30 PM Classroom time

Sunday Programs

November 1

Emet Dor Kef (The Fun Generation)

4:00-5:30 PM Classroom time

For education program information, please contact
Debbie Zajac at admin@emeth.net or (408) 778-8200





We're spreading MODness!

Bring this flyer with you on
Tuesday, November 10th
10:00am-10:30pm

MOD Pizza will donate
20% of your entire check to:
Congregation Emeth Youth Group

Valid for dine in, take out or phone orders.

Valid only at the following locations:

MOD Morgan Hill
1031 Cochrane Rd
Morgan Hill, CA 95037
669.258.0000



Offer valid only on the date(s) and at the MOD location identified on this flyer. Only 501c organizations and non-profit schools are eligible to participate in the MOD fundraising program. MOD will donate twenty percent of food and beverage sales to the organization. Tax, gift card and retail sales are excluded from the donation. Offer valid for dine in, take out or phone orders. Offer void if flyer is distributed in or near restaurant. For more information about the 501c organization participating in the fundraiser, please contact the organization directly.

www.modpizza.com



We're spreading MODness!

Bring this flyer with you on
Tuesday, November 10th
10:00am-10:30pm

MOD Pizza will donate
20% of your entire check to:
Congregation Emeth Youth Group

Valid for dine in, take out or phone orders.

Valid only at the following locations:

MOD Morgan Hill
1031 Cochrane Rd
Morgan Hill, CA 95037
669.258.0000



Offer valid only on the date(s) and at the MOD location identified on this flyer. Only 501c organizations and non-profit schools are eligible to participate in the MOD fundraising program. MOD will donate twenty percent of food and beverage sales to the organization. Tax, gift card and retail sales are excluded from the donation. Offer valid for dine in, take out or phone orders. Offer void if flyer is distributed in or near restaurant. For more information about the 501c organization participating in the fundraiser, please contact the organization directly.

www.modpizza.com



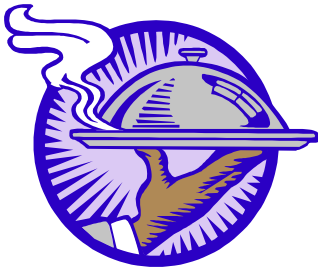
Congregation Emeth is committed to helping feed the needy
on the third Thursday of each month

from 4:00-7:00 p.m.

Lord's Table

St. Mary Catholic Parish

11 First Street, Gilroy



Our next date is: **November 19**

Children accompanied by parents are welcome!

For more information, contact Sandra Jackson

at oursash@yahoo.com



Join us as Congregation Emeth participates in an

Interfaith Thanksgiving Service

Wednesday, November 25

7:00 P.M.

*Advent Lutheran Church
16870 Murphy Avenue
Morgan Hill*

*Mark your calendar –
More details to follow!*



Jewish Family Services of Silicon Valley

Embrace-A-Family This Hanukkah

Here Is How It Works:

**From November 11 to December 18
Pull a dreidel tag from our dreidel board,
purchase the item and return the gift and tag to
Congregation Emeth**

...And put a large smile on someone's face!

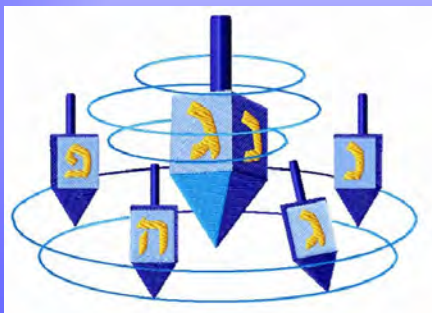
Thank you for your support.

This year for those that like to shop online, we will have additional wishes on a Target gift registry which can be found at

<http://tinyurl.com/2015-Embrace-a-Family>

Any questions? Contact Lori Cinnamon

At 408-357-7467 or Loric@jfssv.org



**We need never-used
gift bags too!**

JEWISH HERITAGE NIGHT AT THE SAN JOSE SHARKS

SATURDAY, DECEMBER 5TH
7:30PM AT THE SAP CENTER
VS. TAMPA BAY LIGHTNING

\$60 UPPER SECTION • \$100 LOWER SECTION

Cost includes ticket, commemorative baseball cap
and donation to the Jewish community

Tickets available at www.jvalley.org/sharks



Jewish Federation®
OF SILICON VALLEY



HANUCCAH

CELEBRATE

== festival of lights ==

***A Community Celebration
@ BookSmart
Sunday, Dec 6
1:30-3pm***

BookSmart
MIND FUEL FOR ALL AGES

80 East 2nd, Morgan Hill, CA



 Dreidels to spin!
Stories to share!
Cookies to decorate!
Songs to sing!
Fun for all!



\$5/family

Questions? Contact membership@emeth.net



SISTERHOOD GIFT SHOP

Get ready for Chanukah!

*Select from life cycle greeting cards, ritual
items, gifts, jewelry and more*

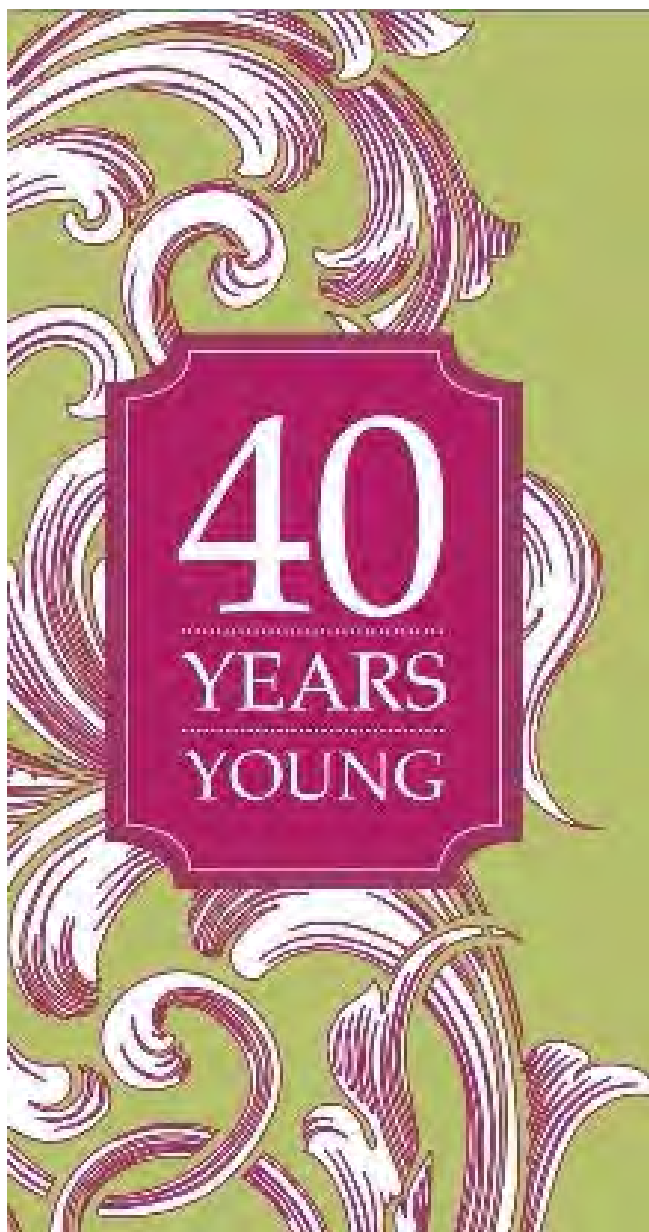
OPEN ON

FRIDAY, NOVEMBER 13

4:30 – 6:30 P.M.

*Questions – contact Patty at (408) 842-6876
or pbaggese@garlic.com*

*Come on by and
SHOP 'TIL YOU DROP!*



Save the Date
Emeth 40th Year
Celebration

Special Friday Night Live
on January 29th

Dinner and dancing with a live band
on Saturday, January 30

Put on your dancing shoes!



SHABBAT HOSTS NEEDED

For the coming year!

November 21 ⁽²⁾ -
Fernandez

December 19 ⁽²⁾
December 25 ⁽⁵⁾

January 16 ⁽²⁾ -
Fernandez

January 29 ⁽³⁾

February 20 ⁽²⁾ -
Fernandez

March 12 ⁽²⁾

April 16 ⁽²⁾ - Fernandez

April 29 ⁽³⁾

May 14 ⁽²⁾

June 11 ⁽²⁾

June 17 ⁽³⁾

Please select at least one Shabbat service
when your family will be the designated hosts.

The Shabbat hosts provide challah and flowers and time before and after the service for setup and cleanup. Why not select a special occasion (for example, anniversary and/or birthday) to host and celebrate with your Emeth family?

**Send your preference of date(s) to
Debbie Zajac
admin@emeth.net or (408) 778-82**



Notes: (1) Erev Shabbat Service
(2) TNT (Torah 'N Tefilah)

Morning Service

(3) FNL Shabbat Service
(4) TNT - Shabbat in the Redwoods
(5) Shabbat Around the Dinner

Table Potluck



Descriptions of Emeth Services

All evening services begin at 7:15 pm. All Erev Shabbat (evening) dinners begin at 6:15 pm.

***Shabbat Short 'N Sweet:** An informal short Erev Shabbat (Friday evening) service. Learn the meaning of the prayers and discuss the Torah portion of the week. Rabbi led, this service is especially appropriate for children of all ages as well as adults. It is part of the Religious School curriculum. Prayers for healing and Mourners Kaddish are included. It is preceded by a community dinner with Shabbat rituals.

***Friday Night Live:** This Erev Shabbat (Friday evening) service highlights Kabbalat Shabbat, the introductory prayers. This is a high energy, musical, abbreviated service appropriate for children of all ages as well as adults. It is part of the Religious School curriculum. Prayers for healing and Mourners Kaddish are included. It is preceded by a potluck dinner with Shabbat rituals.

***TNT – Torah 'N T'filah:** This Erev Shabbat (Friday evening) service includes reading the weekly Torah portion and a sermon. It is a complete Shabbat service.

***Erev Shabbat Services:** Complete Friday evening services, without a Torah service.

***Shabbat at Home:** On certain weekends during the year, Congregation Emeth does not have community Shabbat services. Resources are available from the Congregation to facilitate a meaningful Shabbat dinner and Torah discussion in your home.

***Shabbat Morning Service:** A traditional Shabbat morning service with Torah and Haftarah readings, and Kiddush lunch to follow. Attire is synagogue traditional (business casual to semi-formal).

THANK YOU TO OUR DONORS

SEPTEMBER 2015

(donations received after September 30 will be acknowledged in the December flyers)

Donations to Congregation Emeth are gratefully accepted. Our membership contributions cover only the minimum annual expenses, not the full costs of running a synagogue. Additional gifts are always needed to help keep our activities going.

Donations of money can be by either check or credit card. Donations can also be made in other forms such as property or securities (like appreciated stocks). All are of course tax deductible. Donation information and a form can be found on our website:

http://www.emeth.net/images/PDFs/forms/donation_form.pdf

ALLEN WISOTSKY EDUCATION FUND

The Scholarship Fund assists the children in our Beit Sefer (religious schools) with need-based tuition scholarships.

Lindy Wisotsky

In memory of Allen, Sam and Ann Wisotsky

In memory of Dorrie Ward and Brian Weiss

BETTY MEYER CAMBERSHIP FUND

Reform Jewish summer camps and trips to Israel are valuable means for children to reinforce their Jewish identity. Your contribution will help a student attend who might not otherwise have this opportunity.

Patty & Jim Baggese, in memory of Arthur and Betty Meyer and Beth Baggese

BUILDING FUND

We have owned our own building since 2008. Your contribution will support physical improvements to the building and/or will help us pay down our mortgage. We also issue bonds to members and friends of Emeth. For more information about our Emeth bonds, please contact our president,

president@emeth.net

Cheryl Thompson, in memory of Shirley Abramson

Jackie Stevens, in memory of Lauren Jenkins

Jerome Shapiro, in memory of Lauren Jenkins

Julia Bennett, in memory of Lauren Jenkins

Marilyn & Barry Freund, in memory of Lauren Jenkins

Patty & Jim Baggese, in memory of Lauren Jenkins

Rochell & Robert Lowenthal, in memory of Lauren Jenkins

Sandra & Geoff Jackson, in memory of Lauren Jenkins

CAPITAL CAMPAIGN

Aileen Teren-Foster & Dale Foster, Bimah donation

Brigit & Perry Strongin, Capital campaign donation

Cathy & Stewart Gill, Capital campaign donation

Jan & Jack Shorr, Capital campaign donation

Kathy & Rick Coencas, Capital campaign donation

Marsha & Gerald Novack

In memory of Lauren Jenkins

In honor of Yom Kippur aliyah

Sandra & Arthur Reidel, Capital campaign donation

Susan Meyers & Michael Oshan, Capital campaign donation

GENERAL FUND

Contributions to this fund offset everyday operating expenses for religious school, adult education, youth activity, ritual, programming, etc. thus keeping dues and tuition lower.

Kathy & Rick Coencas, in memory of Kathy Coencas' father
Steve Miller

In honor of Mel Weisblatt

In memory of Lauren Jenkins

HIGH HOLIDAY DONATION

Our High Holiday liturgy reminds us that we have the power and obligation to make a positive different in the world by performing acts of tzedakah, righteousness. Your contribution to High Holiday donations will help enhance our vibrant congregation in the ongoing work of our Rabbi, our educational programs, and maintenance of our sanctuary.

Cathy & Marshall Gonick, High Holiday donation

Gail & David Markham, High Holiday donation

Jerome Shapiro, High Holiday donation

Lana & Anders Olsson, High Holiday donation

Nancy Smereski & Richard Trauben, High Holiday donation

Sue Zeifman & Gene Plaut, High Holiday donation

OUTREACH

Brigit & Perry Strongin, Outreach donation

RABBI'S DISCRETIONARY FUND

This fund enables our Rabbi to make donations to people in need, arrange for programs that she deems worthy, and contribute to other charitable causes she wishes to support. The fund is never used for the Rabbi's personal benefit.

Maria & Jonathan Walters, High Holiday donation

Steve Miller, in honor of David Miller

Susan Meyers & Michael Oshan, Rabbi's Discretionary Fund donation

RACHAMIM FUND

Funds and defrays costs for our loving support of members by providing meals and other services for families in need, including new parents, members who are ill, and members who have sustained a loss of a loved one.

Steve Miller, in honor of Rick Coencas

SISTERHOOD

Sisterhood assists with special holiday receptions, develops a booklet to assist families with upcoming bar/bat mitzvah celebrations, offers programs to the women of Congregation Emeth, and provides philanthropic support to a variety of causes. Donations help fund each year's programs.

Kathy & Rick Coencas, Sisterhood donation

Steve Miller, in honor of Debbie Zajac

ADDITIONAL DONATION OPPORTUNITIES

ADULT EDUCATION COMMITTEE - *Donations to Adult Education support the creation of programs and courses of studies geared for adults. Annual mainstays for this program include adult Hebrew classes, Shabbat in the Redwoods Scholar in Resident, the Adult B'nai Mitzvah program, lectures and films.*

AUTOMOBILE DONATION

BEIT SEIFER SCHOLARSHIP FUND - *The Scholarship Fund assists the children in our Beit Sefer, religious schools, with need-based tuition scholarships.*

CEMETERY FUND - *We maintain a Jewish section of a local cemetery. Your donation will go toward upkeep of the cemetery.*

COMMUNITY DINNER DONATIONS

Part of Emeth's culture is coming together for a Shabbat potluck or community dinner twice a month, prior to Shabbat Short 'N Sweet services. Your contribution enables us to continue this community building.

HIGH HOLIDAY MACHZOR

KARI MUNOWITCH MEMORIAL

LIBRARY FUND - *This fund helps maintain our library and enables us to purchase new books for children and adults.*

LORD'S TABLE

PLAYGROUND

PRAYER BOOK

This fund purchases new worship materials, including our Shabbat prayerbook, Mishkan T'fila and the new Reform High Holiday Machzor.

RELIGIOUS SCHOOL

Funds programs and equipment for the Religious School, helping to offset expenses not covered by school tuition

RITUAL FUND - *Provides funding for cantorial soloists, purchasing supplies to build our Sukkah, and offering special holiday programs, such as our Purim carnival and Chanukah community celebration.*

SOCIAL ACTION

This committee supports a broad range of activities to help enable congregants to repair the world including serving a monthly meal at the Lord's Table for the homeless.

SPECIAL EVENTS

TORAH FUND

Congregation Emeth has two Torahs. Funds are occasionally needed for repairs to our sacred scrolls.

YOUTH GROUP (EMET DOR KEF)

Emet Dor Kef members annually participate in both a retreat and a field trip to Jewish Los Angeles. The teens work hard to raise funds to cover expenses for these special events, but your additional support will make a difference.

WINE EVENT DONATION